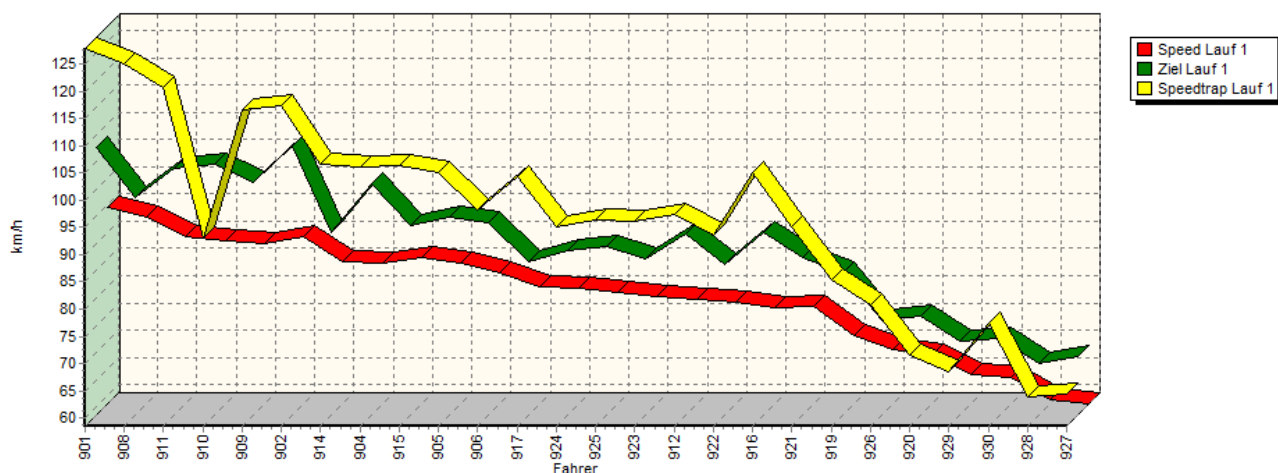
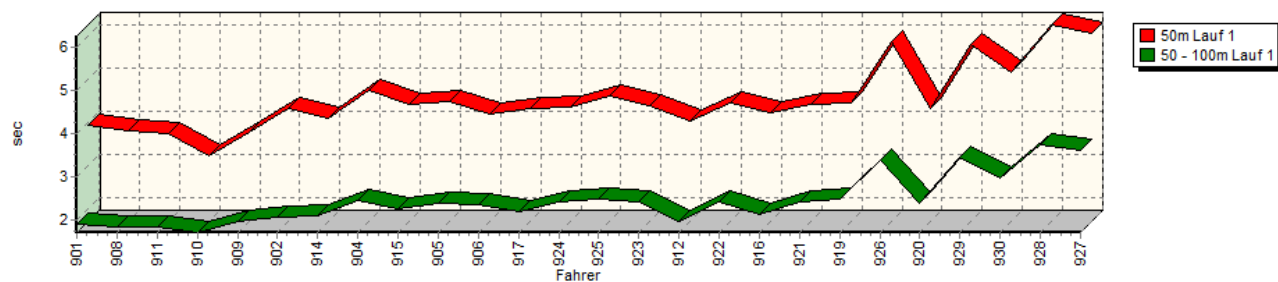


Sektorzeiten & Speeds - Rennen - Elektro- und Hybrid-Fahrzeuge

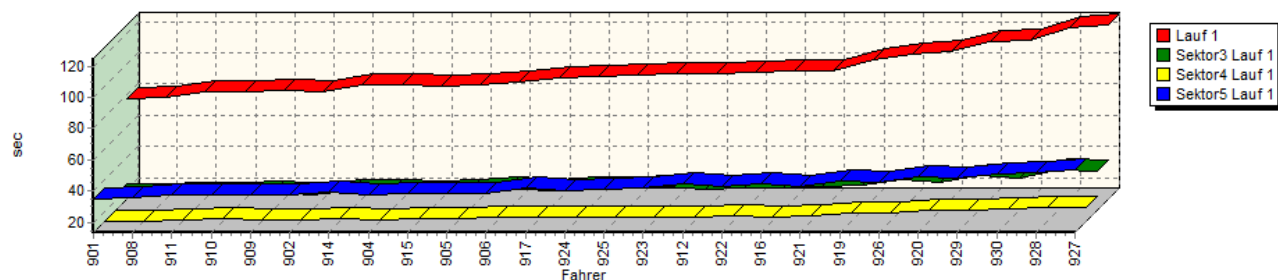
Speed-Diagramm Lauf 1



Sektor-Diagramm (Start) Lauf 1

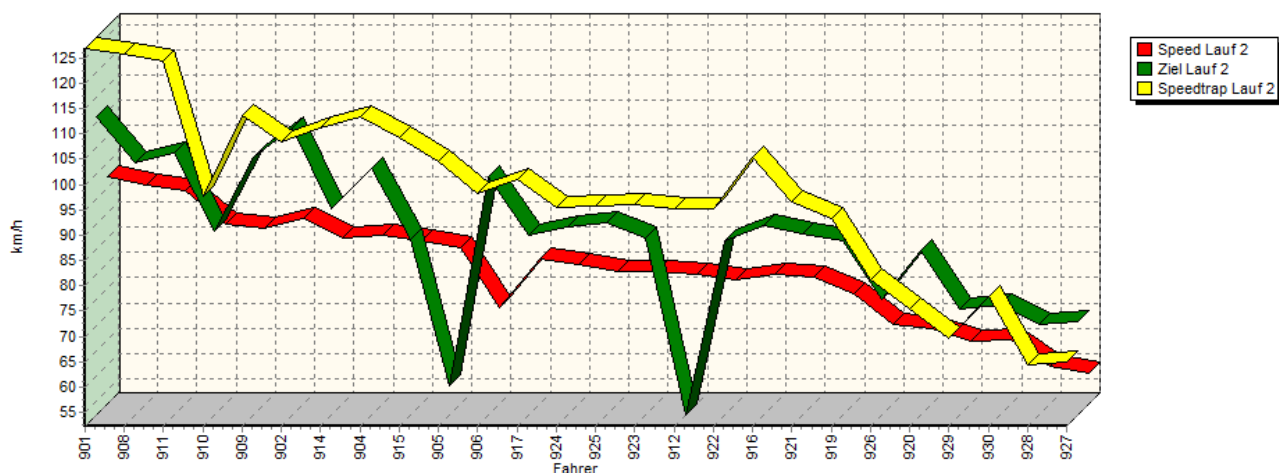


Sektor-Diagramm (Rest) Lauf 1

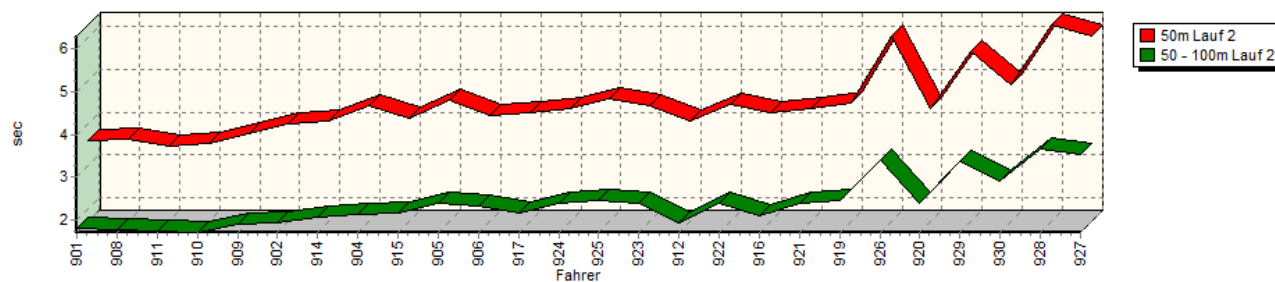


Sektorzeiten & Speeds - Rennen - Elektro- und Hybrid-Fahrzeuge

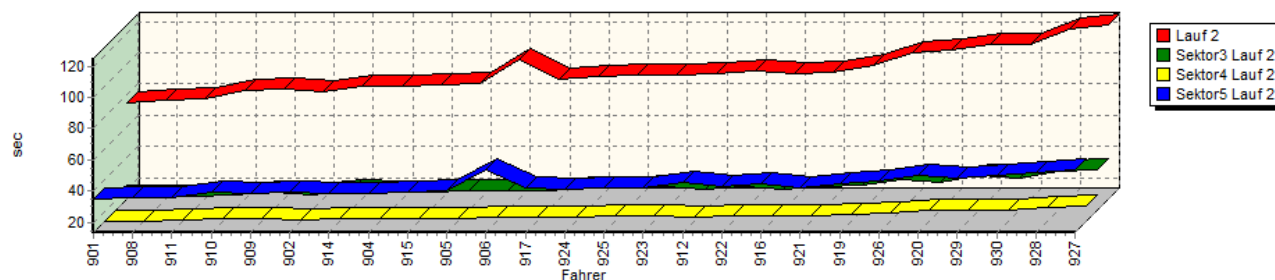
Speed-Diagramm Lauf 2



Sektor-Diagramm (Start) Lauf 2

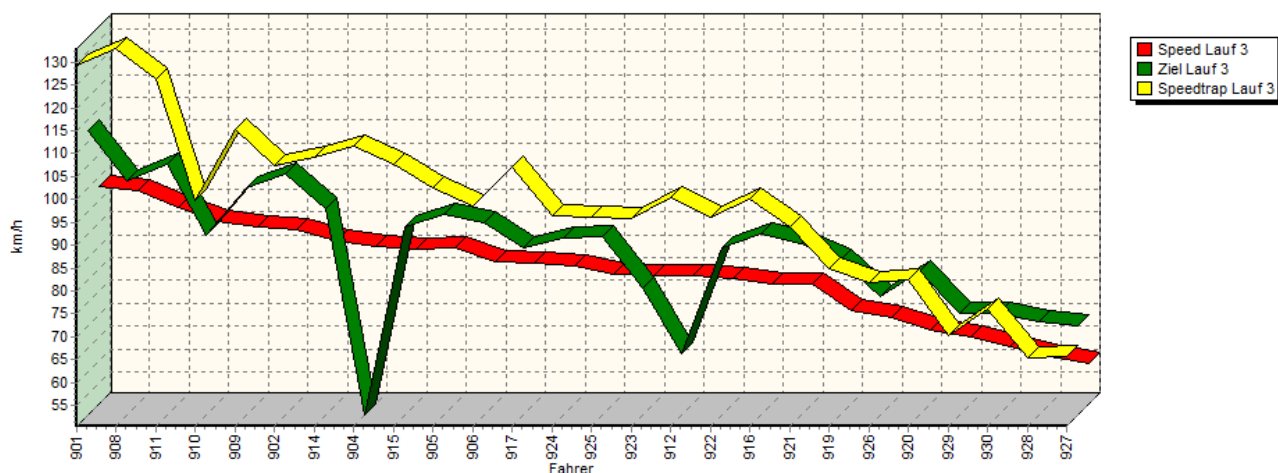


Sektor-Diagramm (Rest) Lauf 2

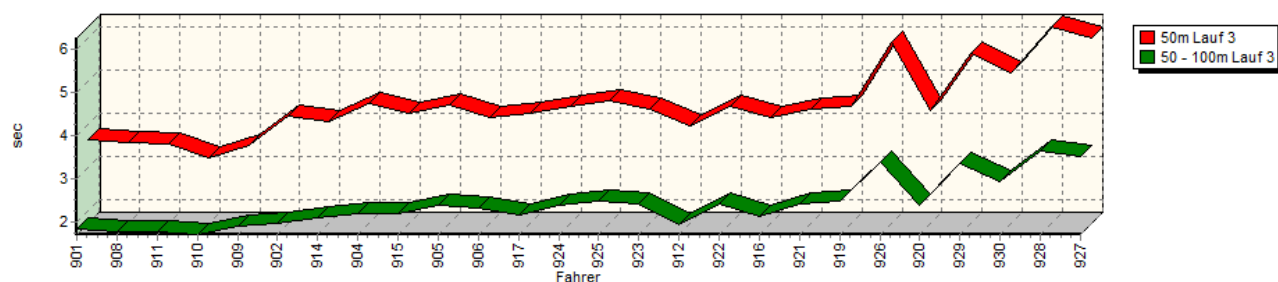


Sektorzeiten & Speeds - Rennen - Elektro- und Hybrid-Fahrzeuge

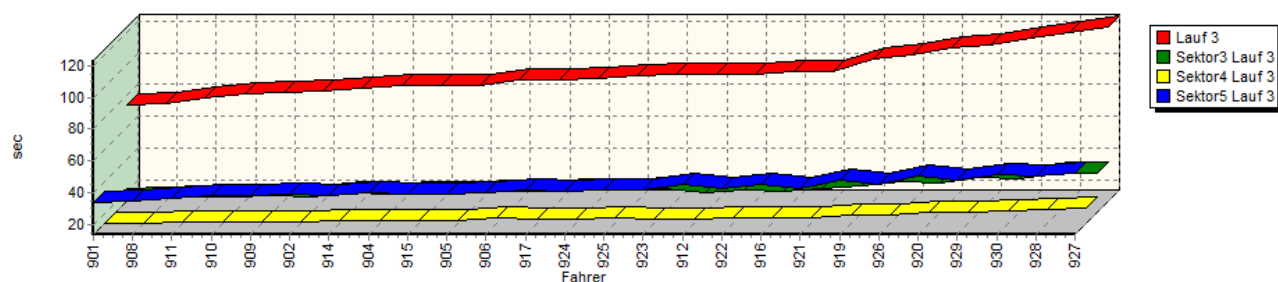
Speed-Diagramm Lauf 3



Sektor-Diagramm (Start) Lauf 3



Sektor-Diagramm (Rest) Lauf 3



Rg.	Nr.	Sektor 1	Sektor 2	Sektor 3	Sektor 4	Speed Trap	Sektor 5	Speed (Ziel)	Laufzeit	Speed (Lauf)	
1	901	NIEHAVES Christian	BMW i8								
		Lauf 1:	00:03.942	00:01.884	00:23.301	00:13.629	127,91 km/h	00:34.594	107,60 km/h	01:17.350	94,48 km/h
		Lauf 2:	00:03.588	00:01.830	00:22.061	00:13.323	126,88 km/h	00:34.330	111,08 km/h	01:15.132	97,27 km/h
		Lauf 3:	00:03.632	00:01.839	00:21.766	00:13.452	129,38 km/h	00:33.865	112,54 km/h	01:14.554	98,02 km/h

Sektorzeiten & Speeds - Rennen - Elektro- und Hybrid-Fahrzeuge

Rg.	Nr.		Sektor 1	Sektor 2	Sektor 3	Sektor 4	Speed Trap	Sektor 5	Speed (Ziel)	Laufzeit	Speed (Lauf)
2	908	DE MESTRE Rafael	Tesla Model S								
		Lauf 1:	00:03.793	00:01.841	00:23.626	00:14.036	125,09 km/h	00:35.512	98,39 km/h	01:18.808	92,73 km/h
		Lauf 2:	00:03.643	00:01.774	00:22.483	00:13.441	125,75 km/h	00:35.234	102,08 km/h	01:16.575	95,44 km/h
		Lauf 3:	00:03.573	00:01.752	00:21.866	00:13.402	133,00 km/h	00:34.820	101,50 km/h	01:15.413	96,91 km/h
3	911	HUIZINGA Henk	Tesla Model S P85								
		Lauf 1:	00:03.722	00:01.818	00:24.037	00:14.517	120,67 km/h	00:37.846	103,70 km/h	01:21.940	89,19 km/h
		Lauf 2:	00:03.477	00:01.762	00:22.651	00:13.901	124,39 km/h	00:35.542	104,16 km/h	01:17.333	94,50 km/h
		Lauf 3:	00:03.542	00:01.762	00:23.130	00:13.879	126,32 km/h	00:35.916	105,40 km/h	01:18.229	93,42 km/h
4	910	MECHSNER Thomas	Tesla Model S P85D								
		Lauf 1:	00:03.230	00:01.701	00:24.228	00:15.633	93,15 km/h	00:37.715	104,72 km/h	01:22.507	88,57 km/h
		Lauf 2:	00:03.541	00:01.723	00:23.494	00:15.312	97,69 km/h	00:39.295	88,48 km/h	01:23.365	87,66 km/h
		Lauf 3:	00:03.223	00:01.703	00:23.528	00:14.392	99,84 km/h	00:38.185	89,67 km/h	01:21.031	90,19 km/h
5	909	EYMANN Michael	Tesla Roadster								
		Lauf 1:	00:03.763	00:01.946	00:25.375	00:14.655	116,55 km/h	00:37.356	101,32 km/h	01:23.095	87,95 km/h
		Lauf 2:	00:03.742	00:01.916	00:24.865	00:15.004	113,80 km/h	00:38.461	103,17 km/h	01:23.988	87,01 km/h
		Lauf 3:	00:03.516	00:01.885	00:24.197	00:14.414	115,33 km/h	00:37.934	99,99 km/h	01:21.946	89,18 km/h
6	902	STARKE Michael	Porsche Panamera S E-Hybrid								
		Lauf 1:	00:04.327	00:02.055	00:23.534	00:14.105	117,49 km/h	00:37.963	108,01 km/h	01:21.984	89,14 km/h
		Lauf 2:	00:03.988	00:01.951	00:22.861	00:14.397	108,46 km/h	00:39.056	108,94 km/h	01:22.253	88,85 km/h
		Lauf 3:	00:04.181	00:01.975	00:23.050	00:14.426	107,28 km/h	00:38.998	103,14 km/h	01:22.630	88,44 km/h
7	914	PRINZ Matthias	BMW i3								
		Lauf 1:	00:04.100	00:02.087	00:25.910	00:15.219	106,56 km/h	00:39.036	92,08 km/h	01:26.352	84,63 km/h
		Lauf 2:	00:04.053	00:02.083	00:25.642	00:15.423	111,20 km/h	00:38.653	92,92 km/h	01:25.854	85,12 km/h
		Lauf 3:	00:04.067	00:02.082	00:25.632	00:14.860	109,34 km/h	00:38.156	95,66 km/h	01:24.797	86,18 km/h
8	904	KONJER Berthold	Audi A3 e-tron								
		Lauf 1:	00:04.742	00:02.451	00:26.335	00:14.911	106,06 km/h	00:38.073	101,03 km/h	01:26.512	84,47 km/h
		Lauf 2:	00:04.393	00:02.152	00:25.334	00:14.889	113,50 km/h	00:38.558	100,96 km/h	01:25.326	85,65 km/h
		Lauf 3:	00:04.502	00:02.176	00:24.594	00:14.882	111,58 km/h	00:40.043	50,42 km/h	01:26.197	84,78 km/h
9	915	HESELER Björn	Mercedes-Benz B-Klasse Electric								
		Lauf 1:	00:04.420	00:02.248	00:25.372	00:15.104	106,43 km/h	00:38.343	93,27 km/h	01:25.487	85,49 km/h
		Lauf 2:	00:04.103	00:02.182	00:25.389	00:15.172	109,15 km/h	00:39.658	86,93 km/h	01:26.504	84,48 km/h
		Lauf 3:	00:04.248	00:02.184	00:25.836	00:15.119	107,76 km/h	00:39.350	91,63 km/h	01:26.737	84,25 km/h
10	905	SCHAAR Peter	Opel Ampera								
		Lauf 1:	00:04.472	00:02.385	00:25.770	00:15.330	105,00 km/h	00:38.705	94,91 km/h	01:26.662	84,33 km/h
		Lauf 2:	00:04.532	00:02.388	00:25.692	00:15.224	104,57 km/h	00:40.033	58,00 km/h	01:27.869	83,17 km/h
		Lauf 3:	00:04.457	00:02.377	00:25.879	00:15.200	102,49 km/h	00:38.518	94,41 km/h	01:26.431	84,55 km/h
11	906	HALSEMA Stefan	Lotus Super Seven								
		Lauf 1:	00:04.169	00:02.335	00:27.551	00:16.132	98,27 km/h	00:38.250	93,95 km/h	01:28.437	82,64 km/h
		Lauf 2:	00:04.168	00:02.336	00:26.241	00:15.833	98,16 km/h	00:53.941	99,44 km/h	01:42.519	71,28 km/h
		Lauf 3:	00:04.173	00:02.322	00:26.826	00:16.517	98,62 km/h	00:39.768	92,43 km/h	01:29.606	81,56 km/h
12	917	SCHLAACK Malte	BMW i3								
		Lauf 1:	00:04.306	00:02.177	00:26.321	00:16.253	104,45 km/h	00:42.352	86,77 km/h	01:31.409	79,95 km/h
		Lauf 2:	00:04.229	00:02.173	00:26.030	00:15.885	100,99 km/h	00:42.006	87,80 km/h	01:30.323	80,91 km/h
		Lauf 3:	00:04.263	00:02.170	00:26.318	00:16.094	107,21 km/h	00:41.308	86,88 km/h	01:30.153	81,06 km/h
13	924	STEFFEN Lars	Smart fortwo electric drive								
		Lauf 1:	00:04.356	00:02.398	00:28.009	00:16.249	95,00 km/h	00:40.733	88,59 km/h	01:31.745	79,66 km/h
		Lauf 2:	00:04.338	00:02.396	00:27.798	00:16.386	95,49 km/h	00:40.774	89,32 km/h	01:31.692	79,70 km/h
		Lauf 3:	00:04.417	00:02.391	00:27.241	00:16.012	96,44 km/h	00:40.589	89,12 km/h	01:30.650	80,62 km/h

Sektorzeiten & Speeds - Rennen - Elektro- und Hybrid-Fahrzeuge

Rg.	Nr.		Sektor 1	Sektor 2	Sektor 3	Sektor 4	Speed Trap	Sektor 5	Speed (Ziel)	Laufzeit	Speed (Lauf)
14	925	MÜLLER Marcel	Nissan Leaf								
		Lauf 1:	00:04.591	00:02.484	00:27.819	00:16.629	96,34 km/h	00:41.147	89,44 km/h	01:32.670	78,86 km/h
		Lauf 2:	00:04.557	00:02.476	00:27.907	00:16.621	95,66 km/h	00:41.486	90,27 km/h	01:33.047	78,54 km/h
		Lauf 3:	00:04.563	00:02.468	00:27.573	00:16.662	96,11 km/h	00:41.635	89,46 km/h	01:32.901	78,66 km/h
15	923	NIEHENKE Andreas	Smart electric drive								
		Lauf 1:	00:04.371	00:02.420	00:28.401	00:16.535	96,11 km/h	00:41.838	87,11 km/h	01:33.565	78,11 km/h
		Lauf 2:	00:04.401	00:02.413	00:28.106	00:16.621	95,91 km/h	00:41.567	87,18 km/h	01:33.108	78,49 km/h
		Lauf 3:	00:04.372	00:02.410	00:28.250	00:16.391	95,89 km/h	00:41.697	78,14 km/h	01:33.120	78,48 km/h
16	912	WERGES Udo	Tesla Roadster 2.5								
		Lauf 1:	00:04.013	00:01.968	00:27.036	00:16.377	97,49 km/h	00:44.652	91,88 km/h	01:34.046	77,71 km/h
		Lauf 2:	00:04.056	00:01.944	00:26.288	00:16.391	95,10 km/h	00:45.252	52,26 km/h	01:33.931	77,80 km/h
		Lauf 3:	00:03.975	00:01.936	00:25.676	00:16.205	100,41 km/h	00:45.367	63,88 km/h	01:33.159	78,45 km/h
17	922	PISKE Ronny	Smart fortwo Cabrio electric drive								
		Lauf 1:	00:04.446	00:02.415	00:27.990	00:17.031	93,55 km/h	00:42.910	86,04 km/h	01:34.792	77,10 km/h
		Lauf 2:	00:04.433	00:02.410	00:28.092	00:17.296	95,19 km/h	00:42.902	86,74 km/h	01:35.133	76,82 km/h
		Lauf 3:	00:04.415	00:02.402	00:27.797	00:16.968	96,15 km/h	00:42.138	86,87 km/h	01:33.720	77,98 km/h
18	916	POTTHOFF Jessica	BMW i3								
		Lauf 1:	00:04.220	00:02.126	00:27.844	00:16.719	105,13 km/h	00:44.900	92,09 km/h	01:35.809	76,28 km/h
		Lauf 2:	00:04.231	00:02.124	00:26.785	00:16.500	105,47 km/h	00:44.216	89,73 km/h	01:33.856	77,86 km/h
		Lauf 3:	00:04.148	00:02.123	00:26.972	00:16.946	99,96 km/h	00:45.121	90,05 km/h	01:35.310	76,68 km/h
19	921	DROSSEL Björn	Smart electric drive								
		Lauf 1:	00:04.410	00:02.414	00:29.050	00:17.162	95,08 km/h	00:42.611	87,51 km/h	01:35.647	76,41 km/h
		Lauf 2:	00:04.344	00:02.403	00:28.307	00:17.010	96,48 km/h	00:42.307	88,01 km/h	01:34.371	77,44 km/h
		Lauf 3:	00:04.352	00:02.400	00:28.424	00:17.190	93,90 km/h	00:42.865	87,87 km/h	01:35.231	76,74 km/h
20	919	WÜSTNIENHAUS Peter	KIA Soul EV								
		Lauf 1:	00:04.452	00:02.477	00:30.044	00:18.838	85,47 km/h	00:46.959	84,70 km/h	01:42.770	71,11 km/h
		Lauf 2:	00:04.465	00:02.469	00:29.238	00:18.131	93,15 km/h	00:44.607	86,70 km/h	01:38.910	73,89 km/h
		Lauf 3:	00:04.431	00:02.470	00:30.076	00:18.589	84,72 km/h	00:47.403	84,27 km/h	01:42.969	70,97 km/h
21	926	HELM Christian	VW Golf III CitySTROMer								
		Lauf 1:	00:05.853	00:03.368	00:33.216	00:18.934	80,65 km/h	00:45.321	75,85 km/h	01:46.692	68,50 km/h
		Lauf 2:	00:06.007	00:03.389	00:32.766	00:18.711	81,20 km/h	00:46.451	75,02 km/h	01:47.324	68,09 km/h
		Lauf 3:	00:05.927	00:03.390	00:32.595	00:18.508	81,81 km/h	00:45.126	76,31 km/h	01:45.546	69,24 km/h
22	920	BÄUMER Martin	Smart electric drive								
		Lauf 1:	00:04.311	00:02.394	00:31.158	00:20.918	71,62 km/h	00:49.638	76,79 km/h	01:48.419	67,41 km/h
		Lauf 2:	00:04.331	00:02.389	00:31.532	00:20.852	75,26 km/h	00:49.971	84,82 km/h	01:49.075	67,00 km/h
		Lauf 3:	00:04.315	00:02.384	00:31.924	00:20.550	82,40 km/h	00:50.739	81,77 km/h	01:49.912	66,49 km/h
23	929	TENK Tom	Renault Twizy								
		Lauf 1:	00:05.785	00:03.444	00:35.953	00:21.105	68,42 km/h	00:48.232	71,95 km/h	01:54.519	63,81 km/h
		Lauf 2:	00:05.667	00:03.378	00:35.242	00:20.568	69,57 km/h	00:48.034	73,14 km/h	01:52.889	64,74 km/h
		Lauf 3:	00:05.641	00:03.367	00:35.192	00:20.533	70,20 km/h	00:47.626	72,58 km/h	01:52.359	65,04 km/h
24	930	PETERS Matti	Renault Kangoo VAN								
		Lauf 1:	00:05.161	00:02.945	00:34.501	00:21.315	77,48 km/h	00:51.290	72,54 km/h	01:55.212	63,43 km/h
		Lauf 2:	00:04.901	00:02.921	00:34.161	00:20.851	77,98 km/h	00:49.860	73,89 km/h	01:52.694	64,85 km/h
		Lauf 3:	00:05.208	00:02.934	00:34.610	00:21.717	76,05 km/h	00:51.616	72,76 km/h	01:56.085	62,95 km/h
25	928	KREUZHOFEN Madlin	Renault Twizy								
		Lauf 1:	00:06.249	00:03.726	00:39.230	00:22.530	63,79 km/h	00:51.553	67,99 km/h	02:03.288	59,28 km/h
		Lauf 2:	00:06.277	00:03.657	00:38.742	00:22.208	64,48 km/h	00:51.518	70,09 km/h	02:02.402	59,70 km/h
		Lauf 3:	00:06.267	00:03.634	00:38.242	00:21.861	65,33 km/h	00:50.130	70,81 km/h	02:00.134	60,83 km/h

Sektorzeiten & Speeds - Rennen - Elektro- und Hybrid-Fahrzeuge

Rg.	Nr.		Sektor 1	Sektor 2	Sektor 3	Sektor 4	Speed Trap	Sektor 5	Speed (Ziel)	Laufzeit	Speed (Lauf)
26	927	KOLLER Gesa									
		Renault Twizy									
		Lauf 1:	00:06.057	00:03.591	00:38.799	00:22.744	64,29 km/h	00:53.777	69,20 km/h	02:04.968	58,48 km/h
		Lauf 2:	00:06.032	00:03.542	00:39.163	00:23.144	65,06 km/h	00:53.172	70,65 km/h	02:05.053	58,44 km/h
		Lauf 3:	00:05.997	00:03.515	00:38.361	00:23.257	65,78 km/h	00:52.353	69,91 km/h	02:03.483	59,18 km/h