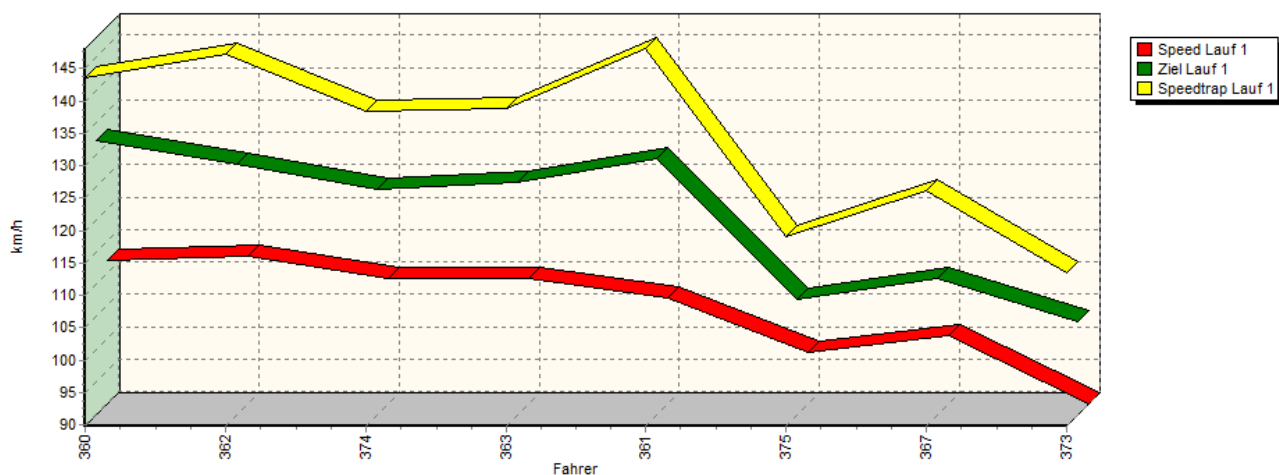
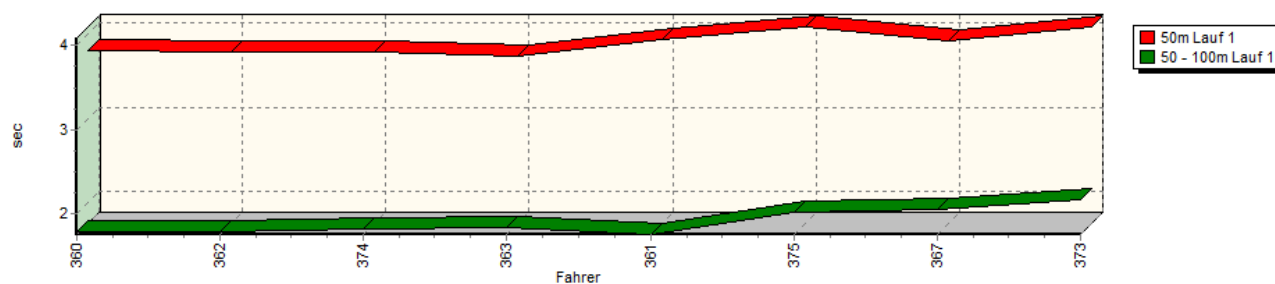


Sektorzeiten & Speeds - Rennen - Gruppe E1-FIA/E1-BERG/E1-ACL/H/FS bis 1600 ccm - Kla

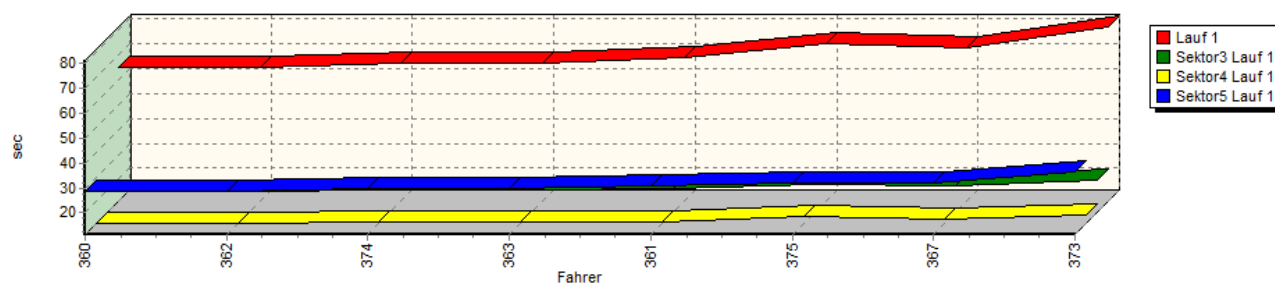
Speed-Diagramm Lauf 1



Sektor-Diagramm (Start) Lauf 1

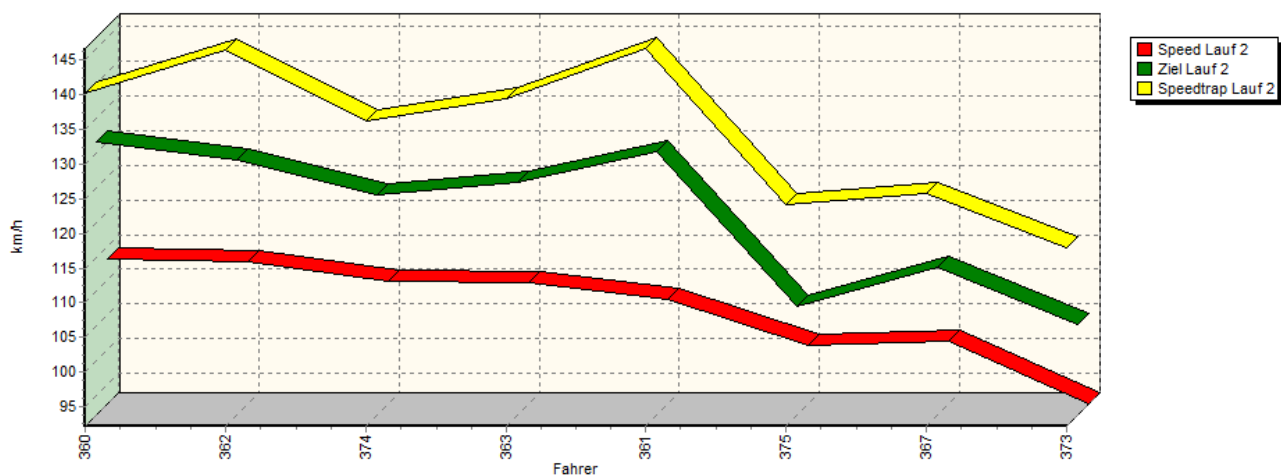


Sektor-Diagramm (Rest) Lauf 1

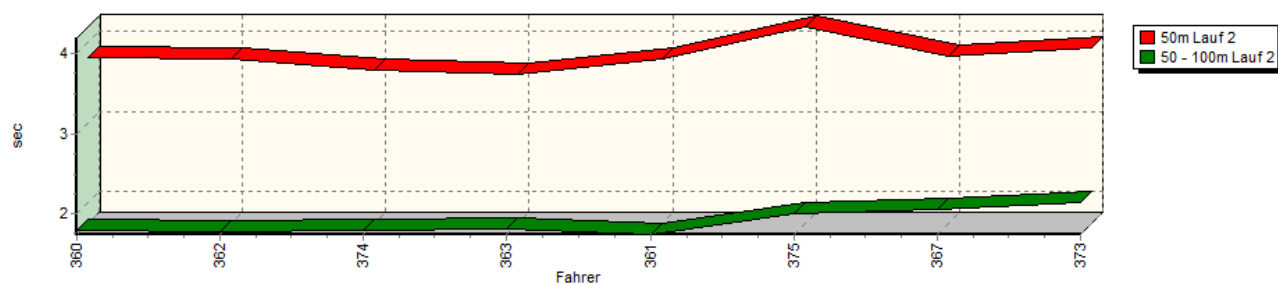


Sektorzeiten & Speeds - Rennen - Gruppe E1-FIA/E1-BERG/E1-ACL/H/FS bis 1600 ccm - Kla

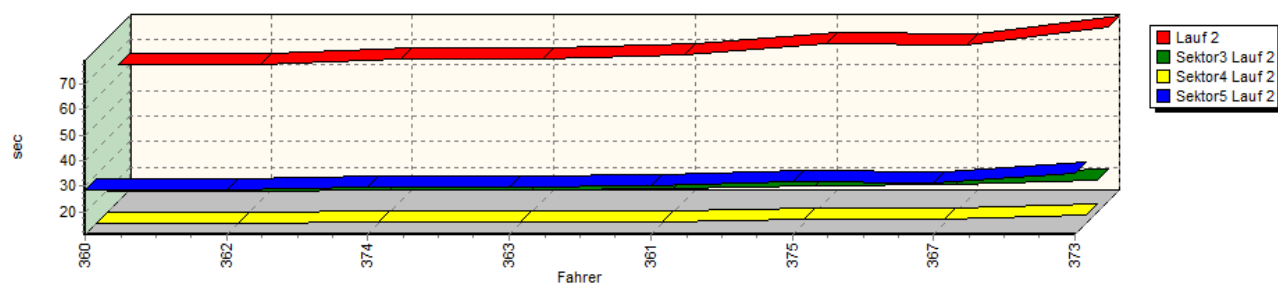
Speed-Diagramm Lauf 2



Sektor-Diagramm (Start) Lauf 2

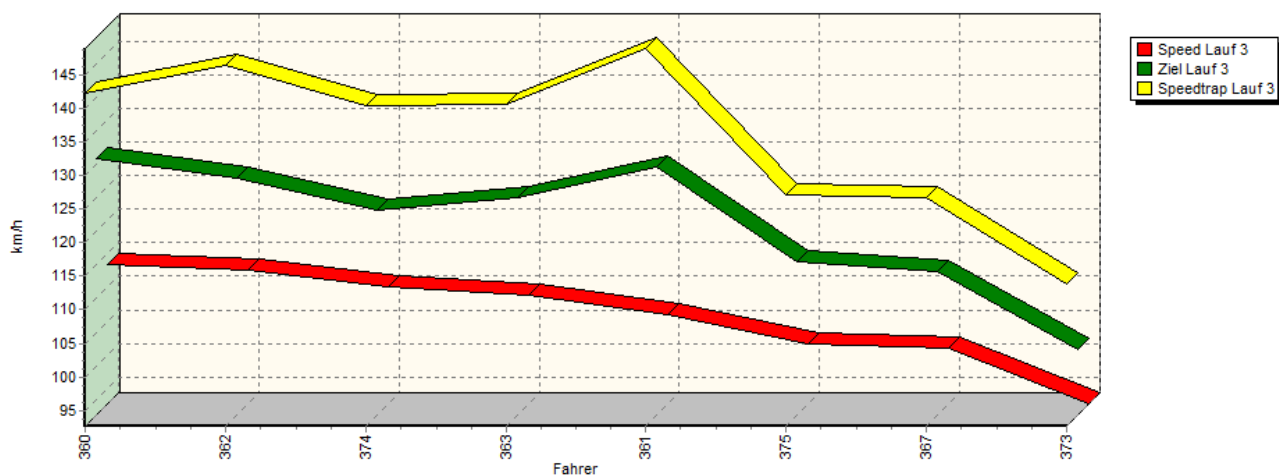


Sektor-Diagramm (Rest) Lauf 2

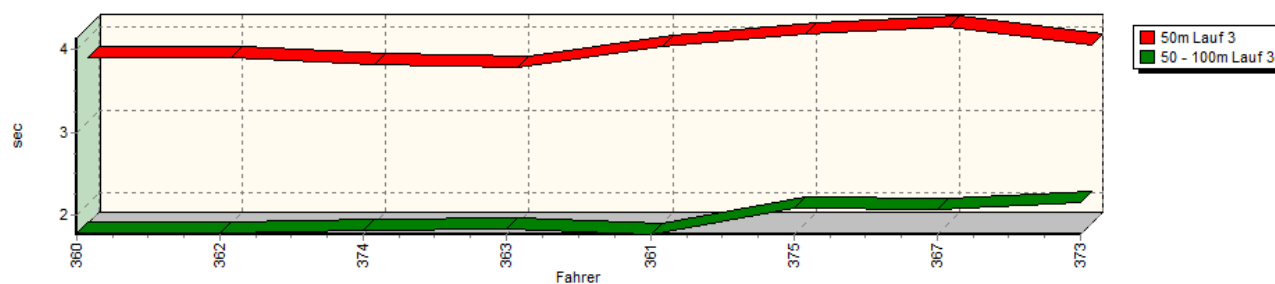


Sektorzeiten & Speeds - Rennen - Gruppe E1-FIA/E1-BERG/E1-ACL/H/FS bis 1600 ccm - Kla

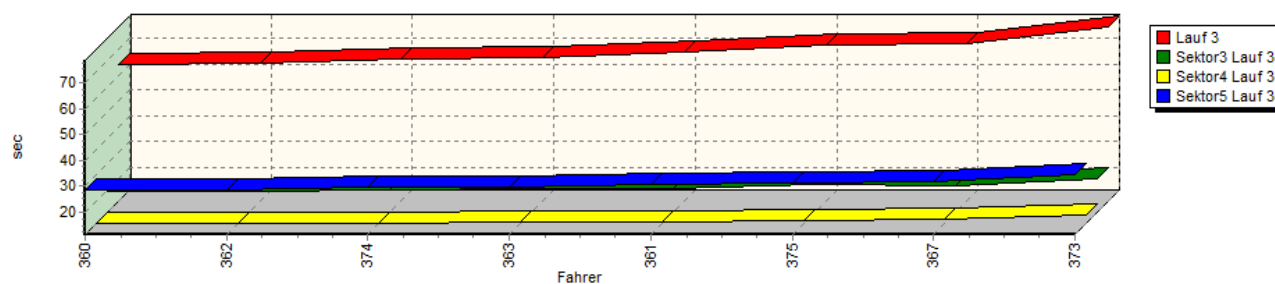
Speed-Diagramm Lauf 3



Sektor-Diagramm (Start) Lauf 3



Sektor-Diagramm (Rest) Lauf 3



Rg.	Nr.	Sektor 1	Sektor 2	Sektor 3	Sektor 4	Speed Trap	Sektor 5	Speed (Ziel)	Laufzeit	Speed (Lauf)
1	360	SCHULTE Manfred		Citroën Nemeth AX KitCar						
		Lauf 1:	00:03.805	00:01.783	00:19.585	00:11.466	143,49 km/h	00:28.615	132,22 km/h	01:05.254 111,99 km/h
		Lauf 2:	00:03.809	00:01.791	00:19.122	00:11.410	140,15 km/h	00:28.497	131,55 km/h	01:04.629 113,08 km/h
		Lauf 3:	00:03.764	00:01.779	00:19.254	00:11.281	142,26 km/h	00:28.340	130,83 km/h	01:04.418 113,45 km/h

Sektorzeiten & Speeds - Rennen - Gruppe E1-FIA/E1-BERG/E1-ACL/H/FS bis 1600 ccm - Kla

Rg.	Nr.		Sektor 1	Sektor 2	Sektor 3	Sektor 4	Speed Trap	Sektor 5	Speed (Ziel)	Laufzeit	Speed (Lauf)
2	362	STELBERG André	VW Schneider RSB Corrado								
		Lauf 1:	00:03.784	00:01.785	00:19.464	00:11.211	147,19 km/h	00:28.634	128,48 km/h	01:04.878	112,64 km/h
		Lauf 2:	00:03.793	00:01.779	00:19.367	00:11.192	146,54 km/h	00:28.674	129,01 km/h	01:04.805	112,77 km/h
		Lauf 3:	00:03.773	00:01.771	00:19.376	00:11.325	146,35 km/h	00:28.725	127,97 km/h	01:04.970	112,48 km/h
3	374	KOOB Sven	Fiat Uno 16V								
		Lauf 1:	00:03.783	00:01.815	00:20.105	00:11.653	138,38 km/h	00:29.619	124,74 km/h	01:06.975	109,11 km/h
		Lauf 2:	00:03.652	00:01.804	00:19.905	00:11.507	136,31 km/h	00:29.611	124,01 km/h	01:06.479	109,93 km/h
		Lauf 3:	00:03.689	00:01.819	00:19.836	00:11.432	140,46 km/h	00:29.563	123,24 km/h	01:06.339	110,16 km/h
4	363	HEINDRICHS Andy	Opel Corsa 16V								
		Lauf 1:	00:03.728	00:01.835	00:20.114	00:11.666	138,92 km/h	00:29.588	125,72 km/h	01:06.931	109,19 km/h
		Lauf 2:	00:03.601	00:01.822	00:20.058	00:11.669	139,43 km/h	00:29.470	125,72 km/h	01:06.620	109,70 km/h
		Lauf 3:	00:03.648	00:01.835	00:20.337	00:11.641	140,71 km/h	00:29.648	125,09 km/h	01:07.109	108,90 km/h
5	361	MAIER Helmut	VW Spieß Golf								
		Lauf 1:	00:03.930	00:01.754	00:20.532	00:11.954	148,11 km/h	00:30.675	129,30 km/h	01:08.845	106,15 km/h
		Lauf 2:	00:03.792	00:01.745	00:20.415	00:11.849	146,68 km/h	00:30.297	130,24 km/h	01:08.098	107,32 km/h
		Lauf 3:	00:03.904	00:01.762	00:20.567	00:12.087	148,92 km/h	00:30.716	129,71 km/h	01:09.036	105,86 km/h
6	375	BÄNECKE Erik	Ford Fiesta								
		Lauf 1:	00:04.074	00:02.024	00:22.684	00:13.802	118,99 km/h	00:32.155	107,68 km/h	01:14.739	97,78 km/h
		Lauf 2:	00:04.186	00:02.008	00:21.549	00:12.975	124,10 km/h	00:31.918	107,96 km/h	01:12.636	100,61 km/h
		Lauf 3:	00:04.052	00:02.076	00:21.872	00:12.579	127,08 km/h	00:31.341	115,43 km/h	01:11.920	101,61 km/h
7	367	SCHULTE Benedikt	Citroën AX Sport 8V								
		Lauf 1:	00:03.921	00:02.055	00:21.883	00:12.981	126,19 km/h	00:31.902	111,00 km/h	01:12.742	100,46 km/h
		Lauf 2:	00:03.817	00:02.049	00:21.838	00:13.084	125,84 km/h	00:31.330	113,53 km/h	01:12.118	101,33 km/h
		Lauf 3:	00:04.139	00:02.062	00:21.485	00:12.871	126,68 km/h	00:31.780	113,95 km/h	01:12.337	101,03 km/h
8	373	BÜTTINGHAUS Andreas	Opel Corsa A CC								
		Lauf 1:	00:04.081	00:02.167	00:24.313	00:14.568	113,50 km/h	00:36.230	104,29 km/h	01:21.359	89,82 km/h
		Lauf 2:	00:03.922	00:02.144	00:23.698	00:14.465	117,95 km/h	00:35.023	105,36 km/h	01:19.252	92,21 km/h
		Lauf 3:	00:03.914	00:02.155	00:24.084	00:14.376	113,93 km/h	00:34.349	102,38 km/h	01:18.878	92,65 km/h