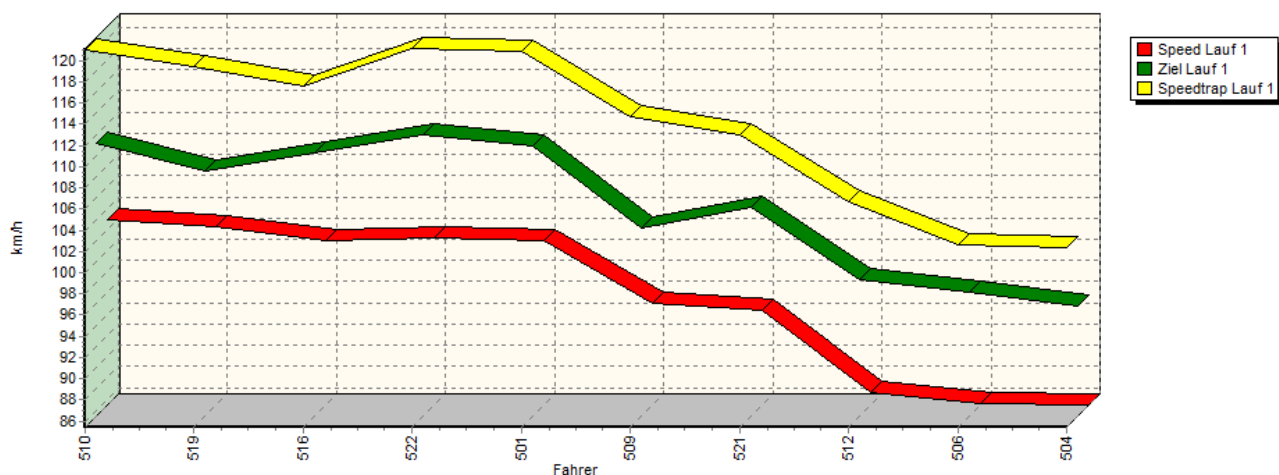
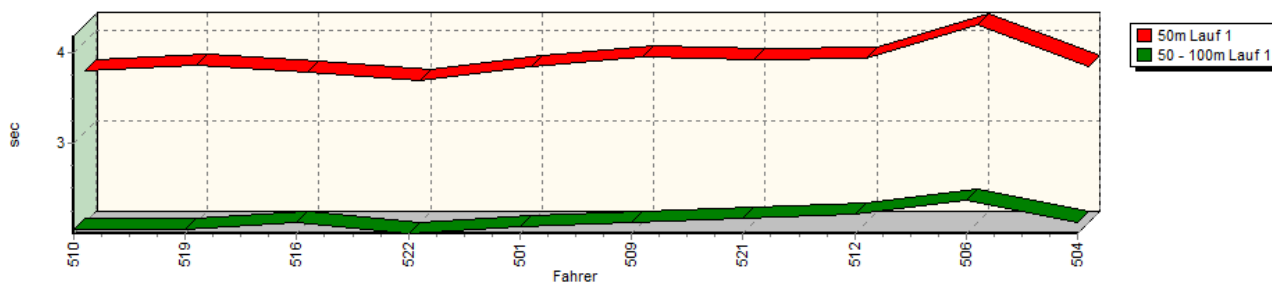


Sektorzeiten & Speeds - Rennen - NSU Bergpokal

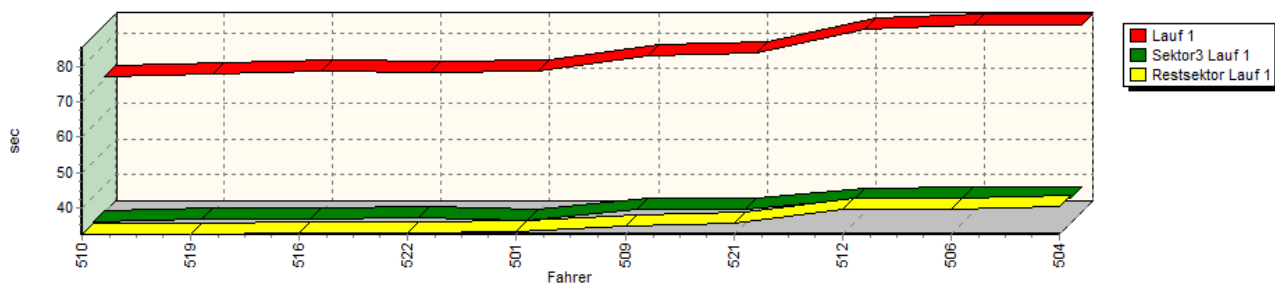
Speed-Diagramm Lauf 1



Sektor-Diagramm (Start) Lauf 1

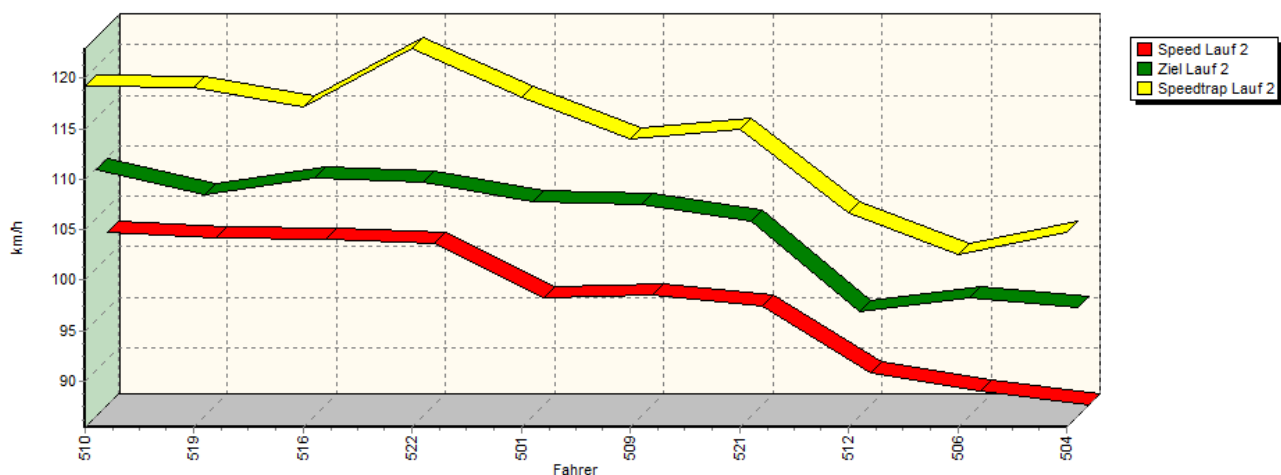


Sektor-Diagramm (Rest) Lauf 1

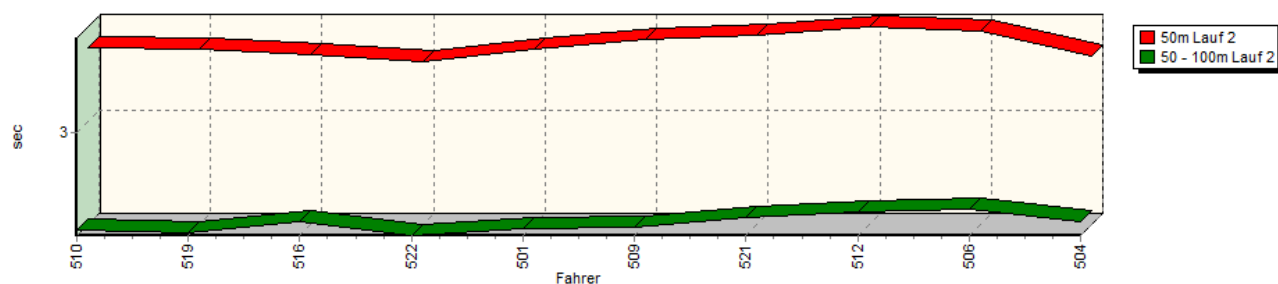


Sektorzeiten & Speeds - Rennen - NSU Bergpokal

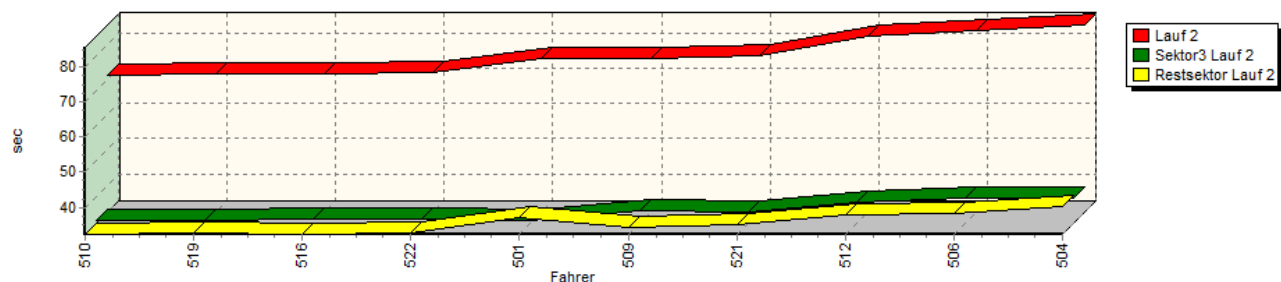
Speed-Diagramm Lauf 2



Sektor-Diagramm (Start) Lauf 2

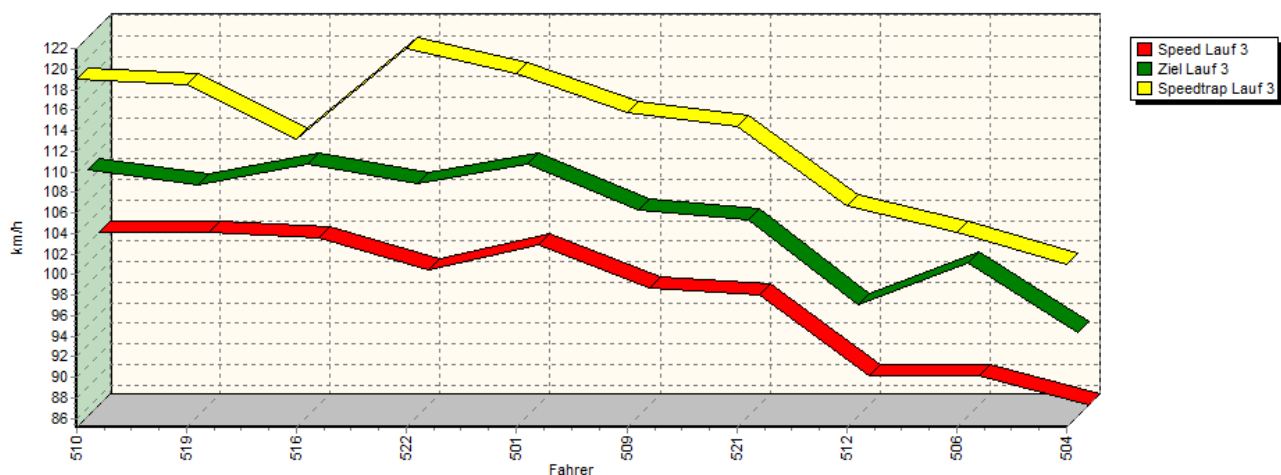


Sektor-Diagramm (Rest) Lauf 2

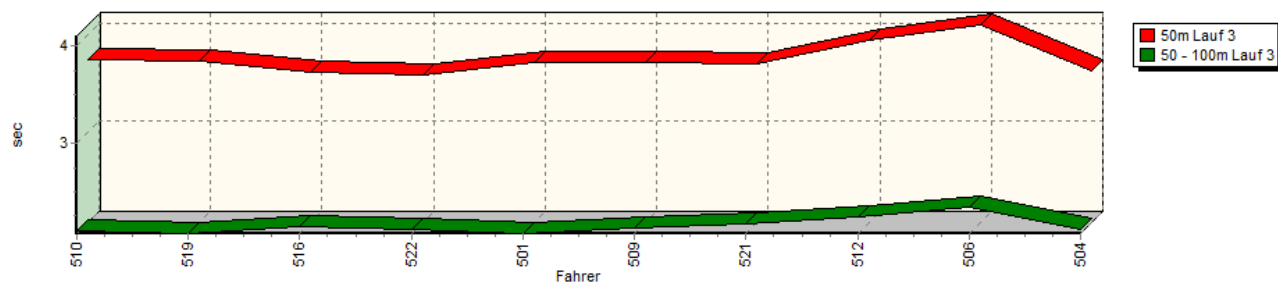


Sektorzeiten & Speeds - Rennen - NSU Bergpokal

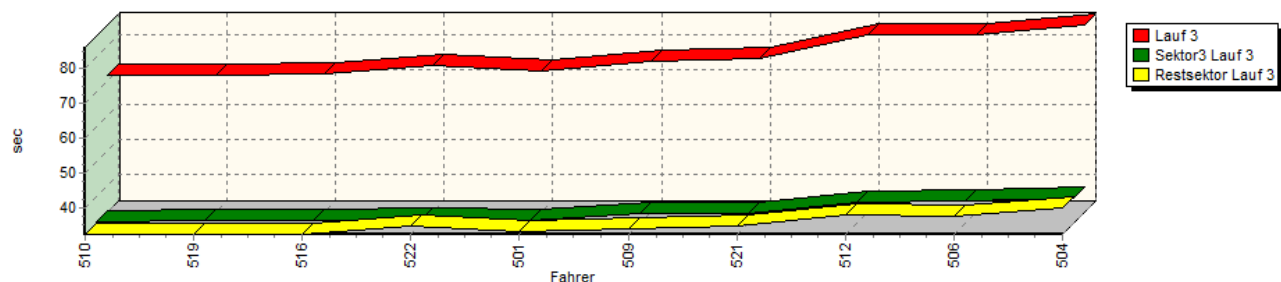
Speed-Diagramm Lauf 3



Sektor-Diagramm (Start) Lauf 3



Sektor-Diagramm (Rest) Lauf 3



Rg.	Nr.	Sektor 1 (50m)	Sektor 2 (50-100m)	Sektor 3	Speed Trap	Sektor 4	Speed (Ziel)	Laufzeit	Speed (Lauf)	
1	510	HOFMANN Steffen	NSU TT							
		Lauf 1:	00:03.675	00:02.044	00:32.896	121,02 km/h	00:32.389	111,20 km/h	01:11.004	102,92 km/h
		Lauf 2:	00:03.715	00:02.069	00:33.156	119,25 km/h	00:32.328	109,81 km/h	01:11.268	102,54 km/h
		Lauf 3:	00:03.735	00:02.084	00:33.162	119,06 km/h	00:32.669	109,07 km/h	01:11.650	102,00 km/h

Sektorzeiten & Speeds - Rennen - NSU Bergpokal

Rg.	Nr.		Sektor 1 (50m)	Sektor 2 (50-100m)	Sektor 3	Speed Trap	Sektor 4	Speed (Ziel)	Laufzeit	Speed (Lauf)
2	519	DAVIDOVIC Jörg	NSU TT							
		Lauf 1:	00:03.735	00:02.049	00:33.369	119,50 km/h	00:32.330	108,53 km/h	01:11.483	102,23 km/h
		Lauf 2:	00:03.702	00:02.045	00:33.220	119,05 km/h	00:32.690	107,31 km/h	01:11.657	101,99 km/h
		Lauf 3:	00:03.723	00:02.059	00:33.296	118,46 km/h	00:32.628	107,58 km/h	01:11.706	101,92 km/h
3	516	HÖBER Jörg	NSU TT							
		Lauf 1:	00:03.671	00:02.127	00:33.693	117,55 km/h	00:32.882	110,29 km/h	01:12.373	100,98 km/h
		Lauf 2:	00:03.650	00:02.144	00:33.466	117,09 km/h	00:32.524	109,07 km/h	01:11.784	101,81 km/h
		Lauf 3:	00:03.609	00:02.130	00:33.540	113,23 km/h	00:32.820	109,73 km/h	01:12.099	101,36 km/h
4	522	KRYSTOFIAK Thomas	NSU 1200C KWR							
		Lauf 1:	00:03.566	00:02.005	00:33.960	121,15 km/h	00:32.691	111,96 km/h	01:12.222	101,19 km/h
		Lauf 2:	00:03.580	00:02.013	00:33.610	122,94 km/h	00:32.883	108,60 km/h	01:12.086	101,38 km/h
		Lauf 3:	00:03.578	00:02.101	00:33.816	122,00 km/h	00:34.879	107,78 km/h	01:14.374	98,26 km/h
5	501	STEINERT Karsten	NSU 67							
		Lauf 1:	00:03.723	00:02.080	00:33.307	120,90 km/h	00:33.305	110,90 km/h	01:12.415	100,92 km/h
		Lauf 2:	00:03.697	00:02.076	00:33.199	118,08 km/h	00:37.062	106,73 km/h	01:16.034	96,12 km/h
		Lauf 3:	00:03.713	00:02.061	00:33.388	119,54 km/h	00:33.377	109,65 km/h	01:12.539	100,75 km/h
6	509	MEURER Karlheinz	NSU TT							
		Lauf 1:	00:03.831	00:02.126	00:36.172	114,69 km/h	00:34.784	103,15 km/h	01:16.913	95,02 km/h
		Lauf 2:	00:03.789	00:02.100	00:35.775	114,02 km/h	00:34.231	106,35 km/h	01:15.895	96,29 km/h
		Lauf 3:	00:03.709	00:02.122	00:35.516	115,76 km/h	00:34.304	105,15 km/h	01:15.651	96,60 km/h
7	521	VOIGT Walter	NSU 1300							
		Lauf 1:	00:03.799	00:02.176	00:36.219	112,97 km/h	00:35.314	105,12 km/h	01:17.508	94,29 km/h
		Lauf 2:	00:03.833	00:02.190	00:35.545	114,91 km/h	00:35.144	104,80 km/h	01:16.712	95,27 km/h
		Lauf 3:	00:03.703	00:02.156	00:35.489	114,45 km/h	00:34.880	104,25 km/h	01:16.228	95,87 km/h
8	512	NEUNER Bernhard	NSU TT 67							
		Lauf 1:	00:03.812	00:02.224	00:38.899	106,73 km/h	00:39.409	98,35 km/h	01:24.344	86,64 km/h
		Lauf 2:	00:03.916	00:02.235	00:38.397	106,73 km/h	00:37.972	95,82 km/h	01:22.520	88,56 km/h
		Lauf 3:	00:03.948	00:02.236	00:38.548	106,71 km/h	00:38.262	95,99 km/h	01:22.994	88,05 km/h
9	506	SCHABACKER Pit	NSU TT							
		Lauf 1:	00:04.186	00:02.377	00:39.566	102,63 km/h	00:39.294	97,05 km/h	01:25.423	85,55 km/h
		Lauf 2:	00:03.877	00:02.267	00:39.610	102,58 km/h	00:38.375	97,22 km/h	01:24.129	86,87 km/h
		Lauf 3:	00:04.101	00:02.329	00:38.827	104,12 km/h	00:37.739	100,01 km/h	01:22.996	88,05 km/h
10	504	SZOTT Roman	NSU TT							
		Lauf 1:	00:03.729	00:02.132	00:39.402	102,31 km/h	00:40.292	95,86 km/h	01:25.555	85,42 km/h
		Lauf 2:	00:03.640	00:02.147	00:39.514	104,71 km/h	00:40.234	96,22 km/h	01:25.535	85,44 km/h
		Lauf 3:	00:03.629	00:02.109	00:39.828	100,99 km/h	00:40.245	93,31 km/h	01:25.811	85,16 km/h