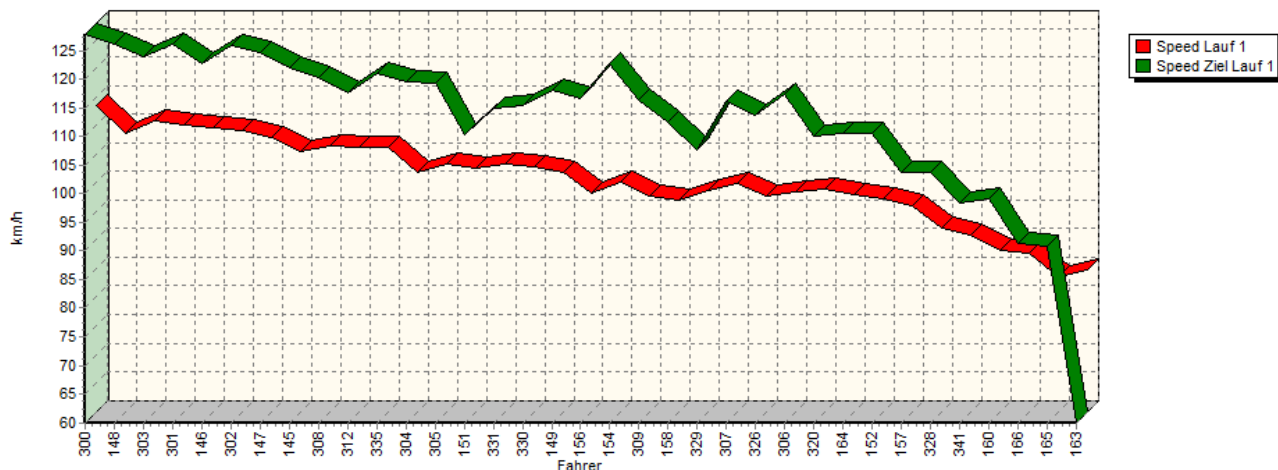
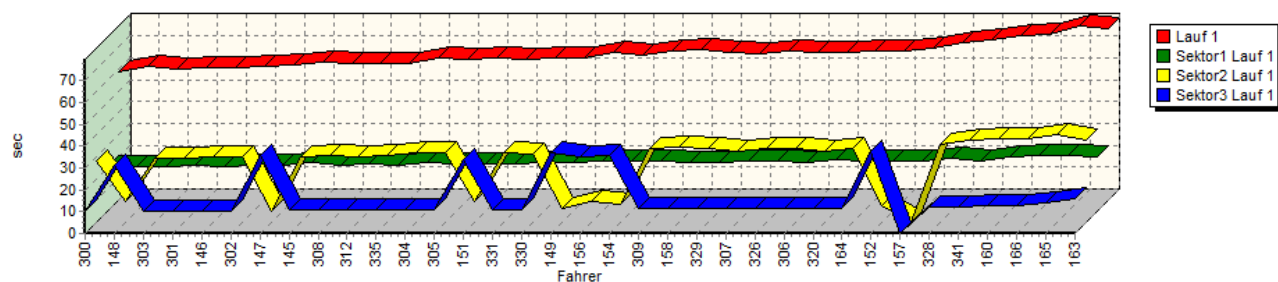


Sektorzeiten & Speeds - Groupe E1-National+E1-FIA+E1-EX Classe 23: +1600-2000 ccm

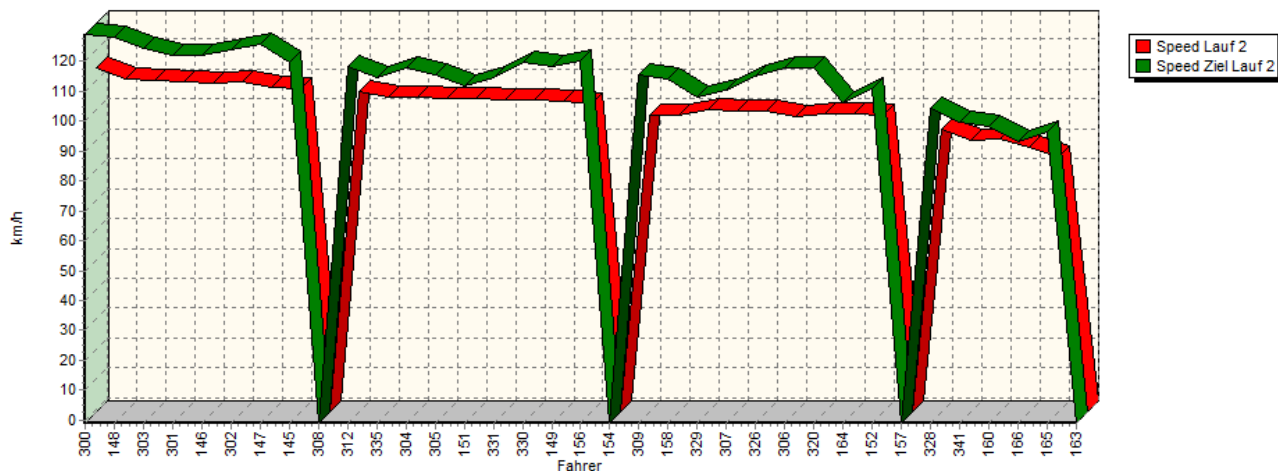
Speed-Diagramm Lauf 1



Sektor-Diagramm (Rest) Lauf 1

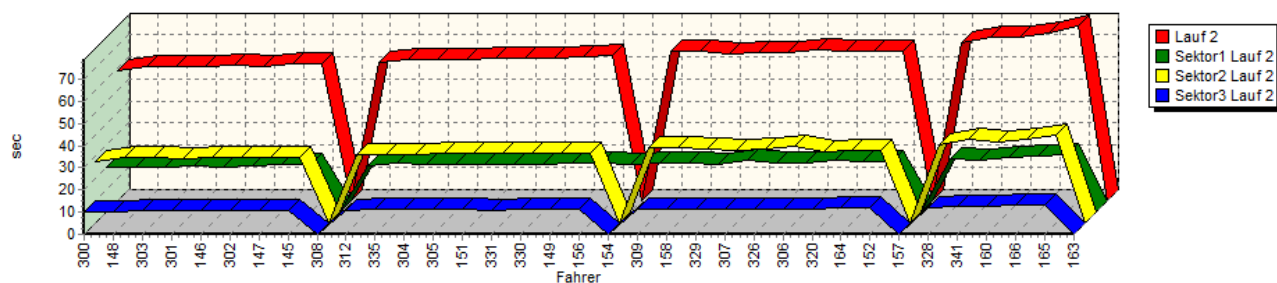


Speed-Diagramm Lauf 2

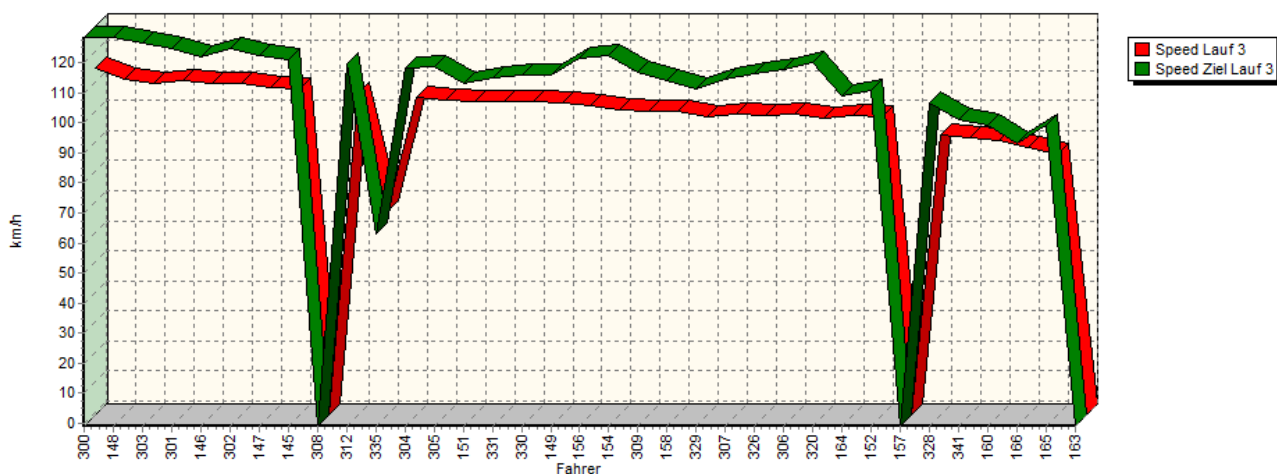


Sektorzeiten & Speeds - Groupe E1-National+E1-FIA+E1-EX Classe 23: +1600-2000 ccm

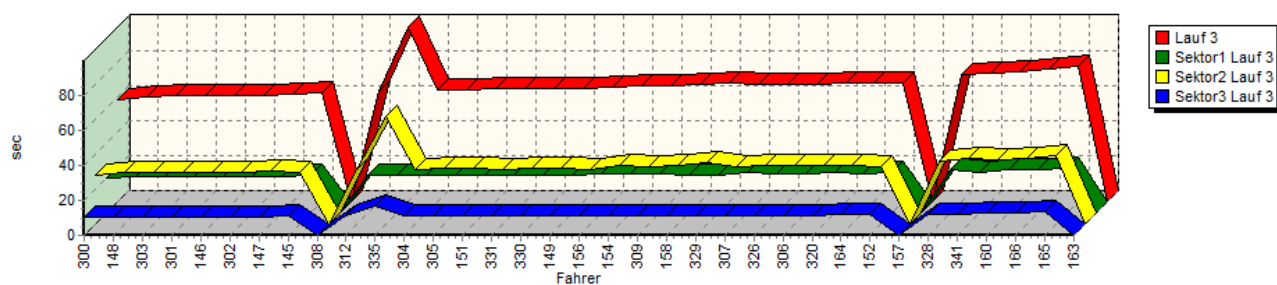
Sektor-Diagramm (Rest) Lauf 2



Speed-Diagramm Lauf 3



Sektor-Diagramm (Rest) Lauf 3



Rg.	Nr.	Sektor 1	Sektor 2	Sektor 3	Speed Ziel	Laufzeit	Speed (Lauf)
1	300	WEIDINGER Jörg		BMW 318i STW			
		Lauf 1:	00:20.533	00:28.180	00:09.998	127,85 km/h	00:58.711
		Lauf 2:	00:20.201	00:28.066	00:10.162	128,99 km/h	00:58.429
		Lauf 3:	00:20.196	00:28.020	00:10.018	128,28 km/h	00:58.234



European Hill Race

Bergrennen Eschdorf

2. - 4. Mai 2014

Luxemburger Bergmeisterschaft 2014

Deutsche Bergmeisterschaft 2014



Sektorzeiten & Speeds - Groupe E1-National+E1-FIA+E1-EX Classe 23: +1600-2000 ccm

Rg.	Nr.	Sektor 1	Sektor 2	Sektor 3	Speed Ziel	Laufzeit	Speed (Lauf)
2	148	PISANO Egidio	VW Minichberger Golf I 16V				
		Lauf 1: 00:20.589	00:09.267	00:31.465	126,25 km/h	01:01.321	108,61 km/h
		Lauf 2: 00:20.484	00:29.572	00:10.376	127,89 km/h	01:00.432	110,21 km/h
		Lauf 3: 00:20.347	00:29.383	00:10.336	128,47 km/h	01:00.066	110,88 km/h
3	303	MINICHBERGER Mario	VW Minichberger Scirocco				
		Lauf 1: 00:20.674	00:29.227	00:10.247	123,86 km/h	01:00.148	110,73 km/h
		Lauf 2: 00:20.431	00:29.369	00:10.738	124,45 km/h	01:00.538	110,01 km/h
		Lauf 3: 00:20.599	00:29.839	00:10.494	126,61 km/h	01:00.932	109,30 km/h
4	301	WIEBE André	Renault Williams Wiebe Laguna				
		Lauf 1: 00:20.813	00:29.195	00:10.462	126,05 km/h	01:00.470	110,14 km/h
		Lauf 2: 00:21.033	00:29.100	00:10.751	121,92 km/h	01:00.884	109,39 km/h
		Lauf 3: 00:20.531	00:29.242	00:10.565	124,86 km/h	01:00.338	110,38 km/h
5	146	ORTH Patrick	BMW 320is E30				
		Lauf 1: 00:20.689	00:29.706	00:10.409	122,64 km/h	01:00.804	109,53 km/h
		Lauf 2: 00:20.491	00:29.976	00:10.668	122,09 km/h	01:01.135	108,94 km/h
		Lauf 3: 00:20.671	00:29.715	00:10.522	122,17 km/h	01:00.908	109,35 km/h
6	302	SONDERBAUER Roman	Opel Ziegler Kadett C Coupé 16\				
		Lauf 1: 00:20.791	00:29.891	00:10.307	125,98 km/h	01:00.989	109,20 km/h
		Lauf 2: 00:20.745	00:29.715	00:10.454	123,73 km/h	01:00.914	109,34 km/h
		Lauf 3: 00:20.648	00:29.571	00:10.592	124,63 km/h	01:00.811	109,52 km/h
7	147	ELLER Hans Peter	Ford Escort RS2000 V6 STW				
		Lauf 1: 00:21.342	00:04.869	00:35.558	124,69 km/h	01:01.769	107,82 km/h
		Lauf 2: 00:21.211	00:29.871	00:10.777	125,68 km/h	01:01.859	107,66 km/h
		Lauf 3: 00:21.125	00:30.045	00:10.548	122,65 km/h	01:01.718	107,91 km/h
8	145	WIEBE Björn	Renault Williams Wiebe Laguna				
		Lauf 1: 00:22.404	00:29.893	00:10.800	121,95 km/h	01:03.097	105,55 km/h
		Lauf 2: 00:21.496	00:29.765	00:10.886	119,68 km/h	01:02.147	107,17 km/h
		Lauf 3: 00:21.329	00:29.702	00:10.885	121,02 km/h	01:01.916	107,56 km/h
9	308	NAUMANN Peter	VW Polo 1.4 G40 16V				
		Lauf 1: 00:21.274	00:30.716	00:10.536	120,30 km/h	01:02.526	106,52 km/h
		Lauf 2: *	*	*	* km/h	*	* km/h
		Lauf 3: *	*	*	* km/h	*	* km/h
10	312	AUER Christian	BMW 2002				
		Lauf 1: 00:21.491	00:30.077	00:11.099	117,53 km/h	01:02.667	106,28 km/h
		Lauf 2: 00:21.010	00:30.819	00:10.860	118,20 km/h	01:02.689	106,24 km/h
		Lauf 3: 00:21.171	00:30.852	00:10.822	119,76 km/h	01:02.845	105,97 km/h
11	335	FAULHABER Stefan	Opel Briegel Kadett C 8V				
		Lauf 1: 00:21.350	00:30.412	00:10.916	121,06 km/h	01:02.678	106,26 km/h
		Lauf 2: 00:21.900	00:30.781	00:11.206	114,71 km/h	01:03.887	104,25 km/h
		Lauf 3: 00:21.745	01:01.192	00:16.716	62,93 km/h	01:39.653	66,83 km/h
12	304	FLIK Thomas	Renault Clio 16S Williams				
		Lauf 1: 00:22.173	00:32.191	00:11.002	119,67 km/h	01:05.366	101,89 km/h
		Lauf 2: 00:21.497	00:31.161	00:11.235	118,03 km/h	01:03.893	104,24 km/h
		Lauf 3: 00:21.607	00:30.894	00:11.111	118,24 km/h	01:03.612	104,70 km/h
13	305	WEBER Jens	Opel Kadett C				
		Lauf 1: 00:21.644	00:31.748	00:11.042	119,34 km/h	01:04.434	103,36 km/h
		Lauf 2: 00:21.199	00:31.576	00:11.232	115,66 km/h	01:04.007	104,05 km/h
		Lauf 3: 00:21.237	00:31.732	00:11.007	118,89 km/h	01:03.976	104,10 km/h



European Hill Race

Bergrennen Eschdorf

2. - 4. Mai 2014

Luxemburger Bergmeisterschaft 2014

Deutsche Bergmeisterschaft 2014



Sektorzeiten & Speeds - Groupe E1-National+E1-FIA+E1-EX Classe 23: +1600-2000 ccm

Rg.	Nr.	Sektor 1	Sektor 2	Sektor 3	Speed Ziel	Laufzeit	Speed (Lauf)	
14	151	KRUHS Gino	Renault Mégane Maxi 16V					
		Lauf 1:	00:21.899	00:09.430	00:33.657	110,21 km/h	01:04.986	102,48 km/h
		Lauf 2:	00:21.297	00:31.520	00:11.302	111,93 km/h	01:04.119	103,87 km/h
		Lauf 3:	00:21.264	00:31.505	00:11.519	113,30 km/h	01:04.288	103,60 km/h
15	331	DÜMLER Christian	VW Golf II 8V					
		Lauf 1:	00:21.828	00:31.670	00:11.024	114,89 km/h	01:04.522	103,22 km/h
		Lauf 2:	00:21.568	00:31.791	00:11.040	114,46 km/h	01:04.399	103,42 km/h
		Lauf 3:	00:21.913	00:31.459	00:11.075	115,15 km/h	01:04.447	103,34 km/h
16	330	WIEBE Horst	Renault Megane Maxi					
		Lauf 1:	00:22.159	00:31.520	00:11.147	115,54 km/h	01:04.826	102,74 km/h
		Lauf 2:	00:21.715	00:31.631	00:11.210	119,77 km/h	01:04.556	103,17 km/h
		Lauf 3:	00:21.414	00:31.850	00:11.198	115,86 km/h	01:04.462	103,32 km/h
17	149	HOULMANN Fabien	Peugeot 205					
		Lauf 1:	00:22.270	00:06.131	00:36.979	118,19 km/h	01:05.380	101,87 km/h
		Lauf 2:	00:21.979	00:31.772	00:11.069	118,27 km/h	01:04.820	102,75 km/h
		Lauf 3:	00:21.843	00:31.894	00:11.036	116,14 km/h	01:04.773	102,82 km/h
18	156	SCHWILDEN Eric	Peugeot 205 Gti Targez					
		Lauf 1:	00:23.205	00:09.618	00:34.961	116,61 km/h	01:07.784	98,25 km/h
		Lauf 2:	00:22.286	00:31.799	00:11.352	120,33 km/h	01:05.437	101,78 km/h
		Lauf 3:	00:22.575	00:31.411	00:11.411	121,49 km/h	01:05.397	101,84 km/h
19	154	DE KERCHOVE Michel	Peugeot 406 STW					
		Lauf 1:	00:22.773	00:07.996	00:35.840	122,68 km/h	01:06.609	99,99 km/h
		Lauf 2:	00:21.619	*	*	* km/h	A	* km/h
		Lauf 3:	00:22.157	00:33.264	00:10.868	122,55 km/h	01:06.289	100,47 km/h
20	309	KONSTANZER Alex	Opel Kadett C Coupé 8V					
		Lauf 1:	00:22.924	00:33.569	00:11.723	116,38 km/h	01:08.216	97,63 km/h
		Lauf 2:	00:22.411	00:33.876	00:11.417	115,27 km/h	01:07.704	98,37 km/h
		Lauf 3:	00:22.243	00:32.934	00:11.248	116,77 km/h	01:06.425	100,26 km/h
21	158	DEFESCHE Benjamin	VW Scirocco					
		Lauf 1:	00:22.592	00:34.680	00:11.393	112,55 km/h	01:08.665	96,99 km/h
		Lauf 2:	00:22.365	00:34.052	00:11.423	114,01 km/h	01:07.840	98,17 km/h
		Lauf 3:	00:21.798	00:33.389	00:11.404	114,20 km/h	01:06.591	100,01 km/h
22	329	URLAND Ronny	Trabant 601					
		Lauf 1:	00:22.157	00:33.660	00:11.648	107,67 km/h	01:07.465	98,72 km/h
		Lauf 2:	00:21.780	00:33.279	00:11.543	108,01 km/h	01:06.602	100,00 km/h
		Lauf 3:	00:21.640	00:34.739	00:11.488	111,39 km/h	01:07.867	98,13 km/h
23	307	SCHUSTER Jürgen	Mazda RX-7					
		Lauf 1:	00:22.955	00:32.301	00:11.475	116,09 km/h	01:06.731	99,80 km/h
		Lauf 2:	00:23.136	00:32.522	00:11.319	110,58 km/h	01:06.977	99,44 km/h
		Lauf 3:	00:23.213	00:32.551	00:11.473	114,76 km/h	01:07.237	99,05 km/h
24	326	LADAGE Uwe	BMW 320 ETCC					
		Lauf 1:	00:22.685	00:34.126	00:11.377	113,66 km/h	01:08.188	97,67 km/h
		Lauf 2:	00:22.387	00:33.171	00:11.248	114,97 km/h	01:06.806	99,69 km/h
		Lauf 3:	00:22.332	00:33.633	00:11.358	116,23 km/h	01:07.323	98,93 km/h
25	306	FLIK Beatrice	Renault Mégane Cup					
		Lauf 1:	00:22.182	00:33.983	00:11.504	117,44 km/h	01:07.669	98,42 km/h
		Lauf 2:	00:21.845	00:34.845	00:11.373	117,87 km/h	01:08.063	97,85 km/h
		Lauf 3:	00:22.039	00:33.699	00:11.419	117,87 km/h	01:07.157	99,17 km/h



European Hill Race
Bergrennen Eschdorf
2. - 4. Mai 2014
Luxemburger Bergmeisterschaft 2014
Deutsche Bergmeisterschaft 2014



Sektorzeiten & Speeds - Groupe E1-National+E1-FIA+E1-EX Classe 23: +1600-2000 ccm

Rg.	Nr.	Sektor 1	Sektor 2	Sektor 3	Speed Ziel	Laufzeit	Speed (Lauf)	
26	320	WIEBE Peter	Renault Williams Wiebe Laguna					
		Lauf 1:	00:23.557	00:32.585	00:11.258	110,02 km/h	01:07.400	98,81 km/h
		Lauf 2:	00:23.505	00:32.371	00:11.481	117,86 km/h	01:07.357	98,88 km/h
		Lauf 3:	00:23.496	00:33.408	00:11.257	120,23 km/h	01:08.161	97,71 km/h
27	164	SCHWARZ Thomas	Renault Clio 2 Cup					
		Lauf 1:	00:22.920	00:33.798	00:11.366	110,68 km/h	01:08.084	97,82 km/h
		Lauf 2:	00:22.420	00:32.962	00:12.020	106,03 km/h	01:07.402	98,81 km/h
		Lauf 3:	00:22.637	00:33.122	00:11.620	108,80 km/h	01:07.379	98,84 km/h
28	152	SOUVIGNE Mike	Renault Clio Williams					
		Lauf 1:	00:23.265	00:07.646	00:37.553	110,59 km/h	01:08.464	97,28 km/h
		Lauf 2:	00:23.033	00:32.903	00:11.919	110,85 km/h	01:07.855	98,15 km/h
		Lauf 3:	00:23.258	00:32.345	00:12.171	111,05 km/h	01:07.774	98,27 km/h
29	157	LEJEUNE Eric	Peugeot 205 Gti					
		Lauf 1:	00:22.800	*	*	103,82 km/h	01:09.417	95,94 km/h
		Lauf 2:	*	*	*	* km/h	*	* km/h
		Lauf 3:	*	*	*	* km/h	*	* km/h
30	328	ALT Holger	Ford Escort RS2000 16V					
		Lauf 1:	00:24.452	00:35.643	00:12.216	103,84 km/h	01:12.311	92,10 km/h
		Lauf 2:	00:23.716	00:35.352	00:12.276	104,47 km/h	01:11.344	93,35 km/h
		Lauf 3:	00:24.544	00:35.571	00:12.227	106,63 km/h	01:12.342	92,06 km/h
31	341	RUWE Mario	BMW 318is					
		Lauf 1:	00:23.210	00:37.944	00:12.217	98,44 km/h	01:13.371	90,77 km/h
		Lauf 2:	00:23.605	00:37.861	00:12.536	99,49 km/h	01:14.002	90,00 km/h
		Lauf 3:	00:23.423	00:37.398	00:12.219	100,92 km/h	01:13.040	91,18 km/h
32	160	LUCIUS David	Opel Kadett C Rallye 2.0 E					
		Lauf 1:	00:24.889	00:38.010	00:12.549	99,04 km/h	01:15.448	88,27 km/h
		Lauf 2:	00:24.379	00:36.735	00:12.451	98,03 km/h	01:13.565	90,53 km/h
		Lauf 3:	00:24.585	00:36.769	00:12.467	99,22 km/h	01:13.821	90,22 km/h
33	166	VENNEKER Sandor	Peugeot 306 S16					
		Lauf 1:	00:25.267	00:38.082	00:12.716	91,21 km/h	01:16.065	87,56 km/h
		Lauf 2:	00:25.091	00:37.758	00:13.075	93,10 km/h	01:15.924	87,72 km/h
		Lauf 3:	00:25.064	00:37.662	00:12.981	93,33 km/h	01:15.707	87,97 km/h
34	165	TURK Christophe	Renault Clio 16V					
		Lauf 1:	00:25.741	00:40.283	00:13.792	90,93 km/h	01:19.816	83,44 km/h
		Lauf 2:	00:25.668	00:39.872	00:13.374	96,20 km/h	01:18.914	84,40 km/h
		Lauf 3:	00:25.293	00:38.934	00:13.266	99,46 km/h	01:17.493	85,94 km/h
35	163	LEPOT Jean-François	VW Golf II 16V					
		Lauf 1:	00:24.989	00:37.929	00:15.663	59,91 km/h	01:18.581	84,75 km/h
		Lauf 2:	*	*	*	* km/h	*	* km/h
		Lauf 3:	*	*	*	* km/h	*	* km/h

