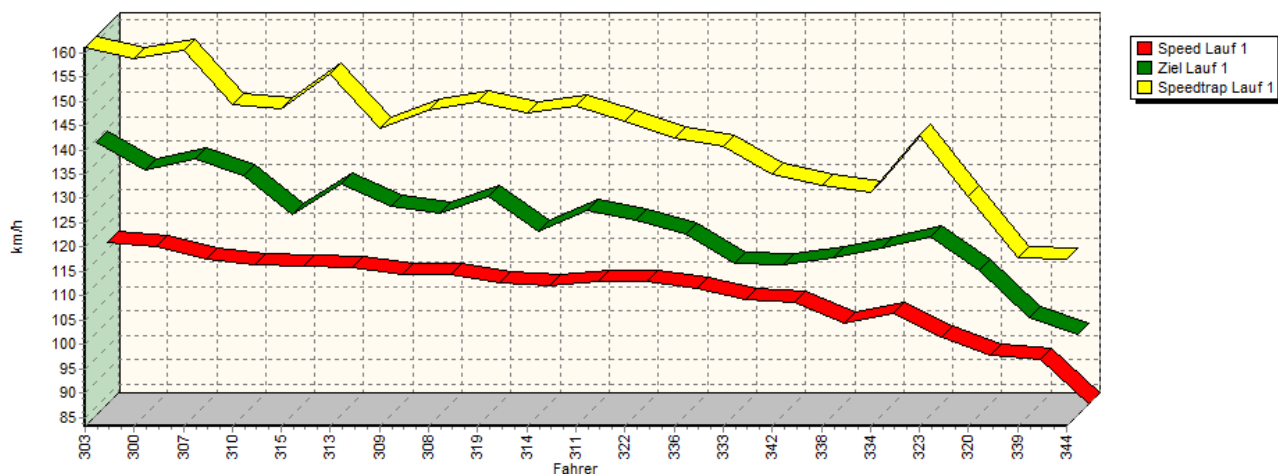
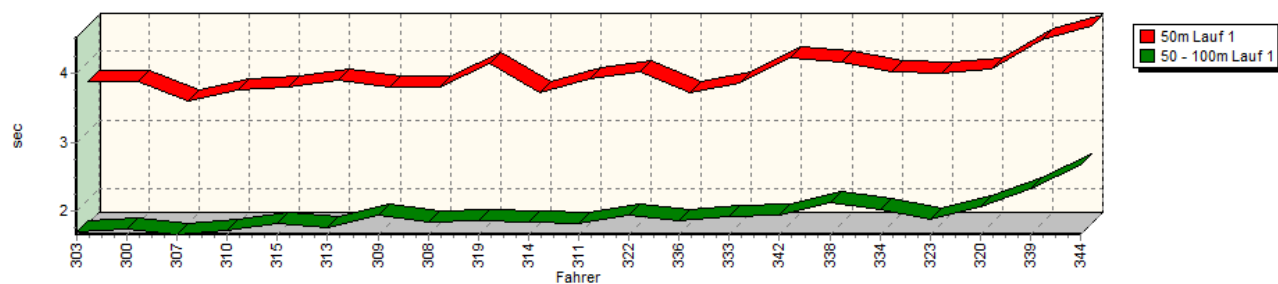


Sektorzeiten & Speeds - Rennen - Gruppe H (DMSB) bis 2000 ccm - Klasse 36

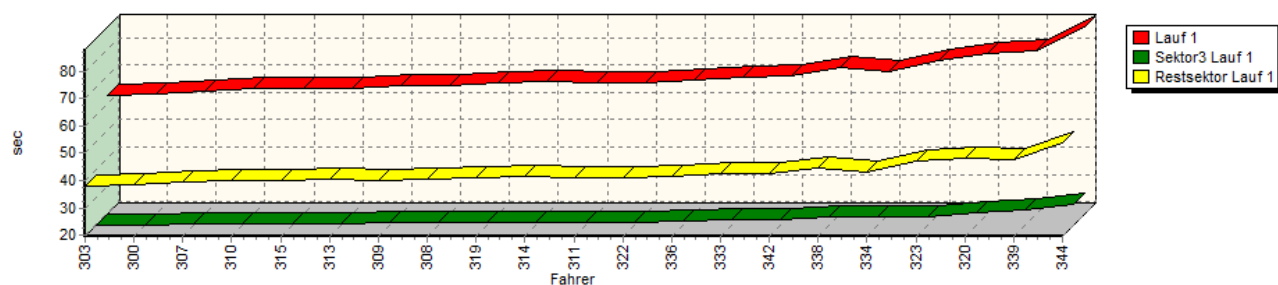
Speed-Diagramm Lauf 1



Sektor-Diagramm (Start) Lauf 1

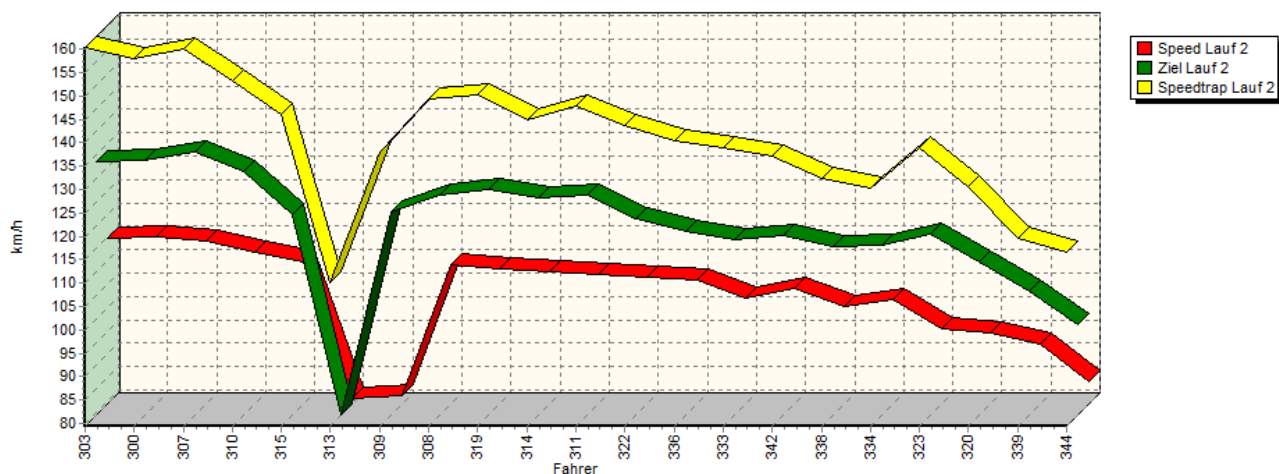


Sektor-Diagramm (Rest) Lauf 1

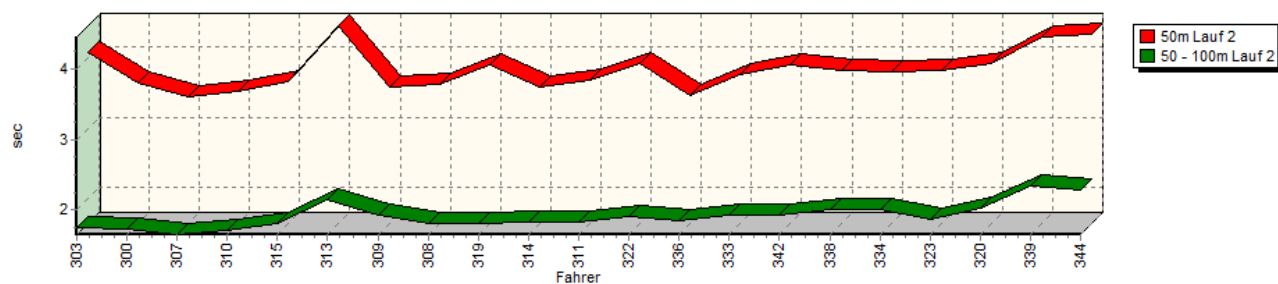


Sektorzeiten & Speeds - Rennen - Gruppe H (DMSB) bis 2000 ccm - Klasse 36

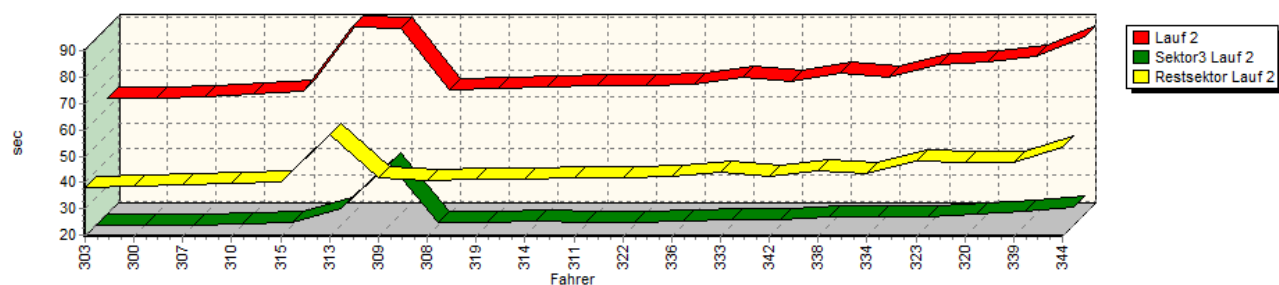
Speed-Diagramm Lauf 2



Sektor-Diagramm (Start) Lauf 2

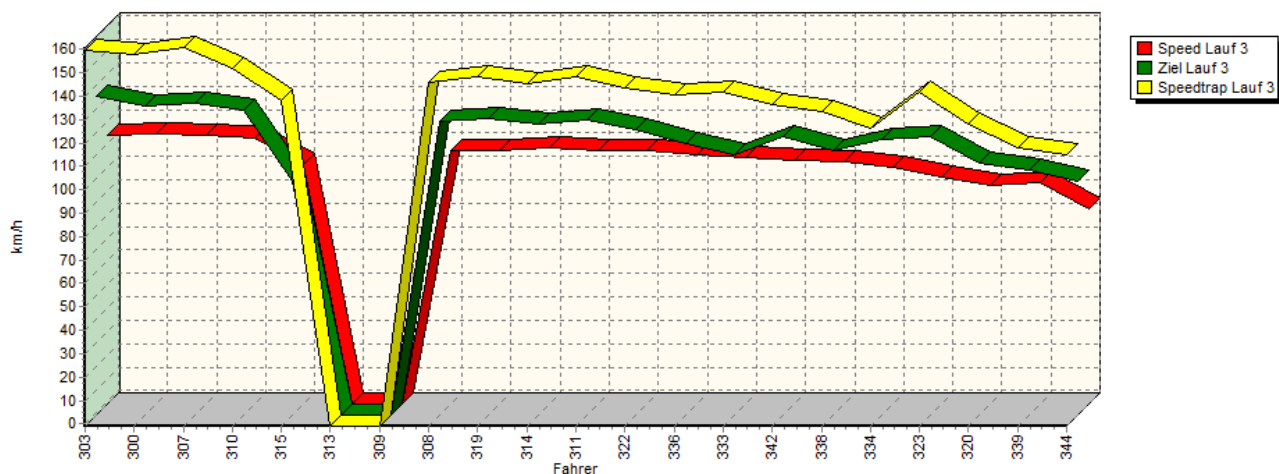


Sektor-Diagramm (Rest) Lauf 2

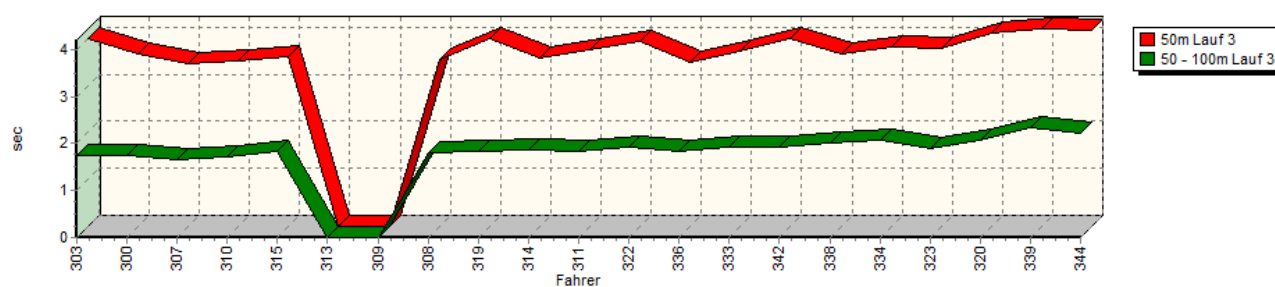


Sektorzeiten & Speeds - Rennen - Gruppe H (DMSB) bis 2000 ccm - Klasse 36

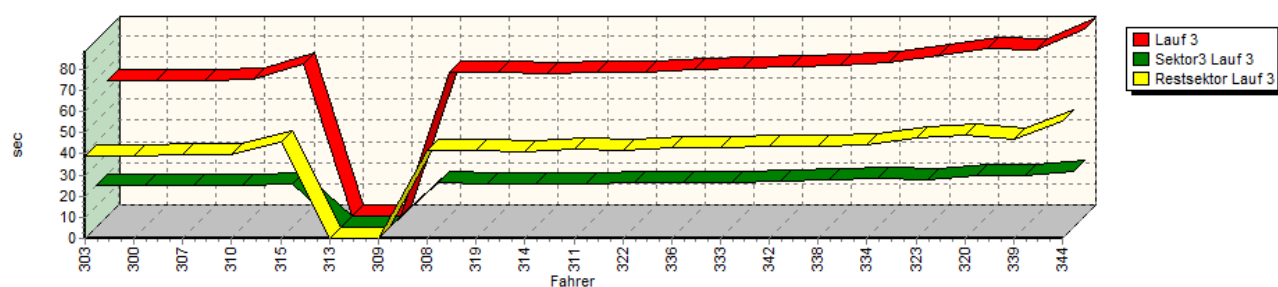
Speed-Diagramm Lauf 3



Sektor-Diagramm (Start) Lauf 3

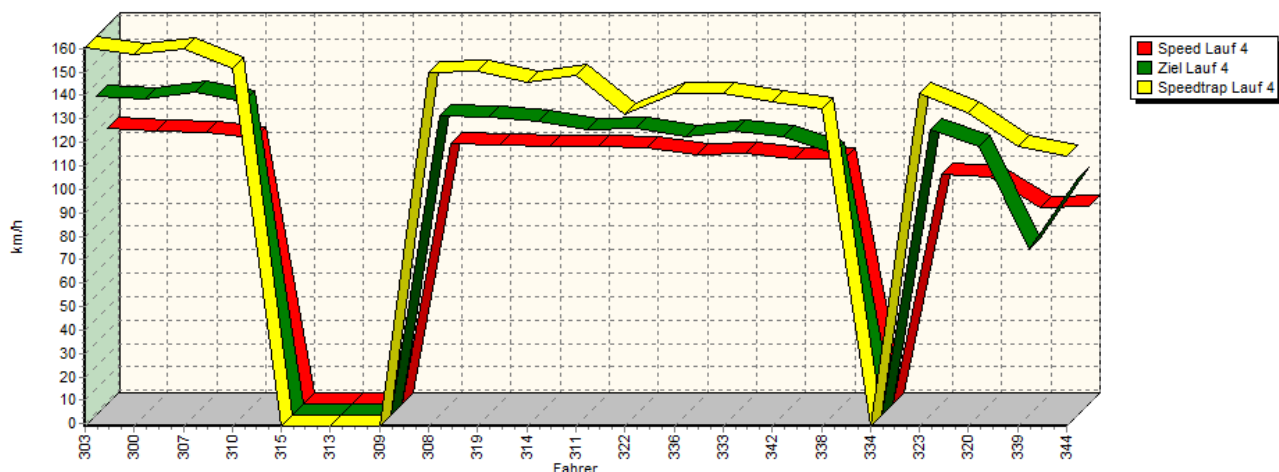


Sektor-Diagramm (Rest) Lauf 3

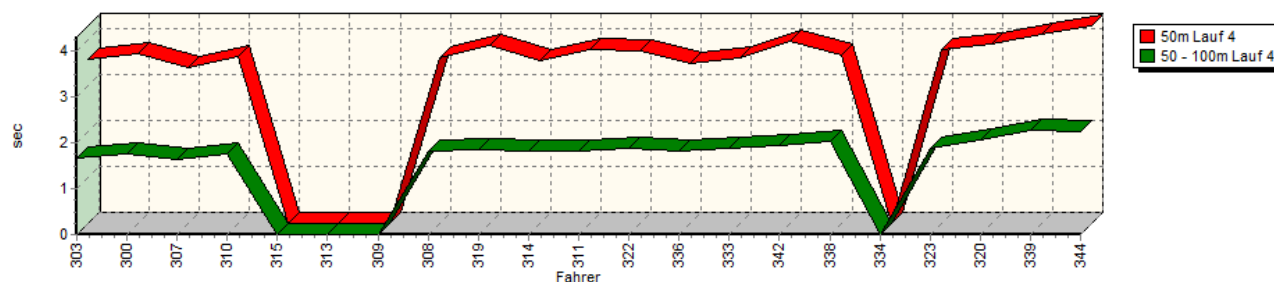


Sektorzeiten & Speeds - Rennen - Gruppe H (DMSB) bis 2000 ccm - Klasse 36

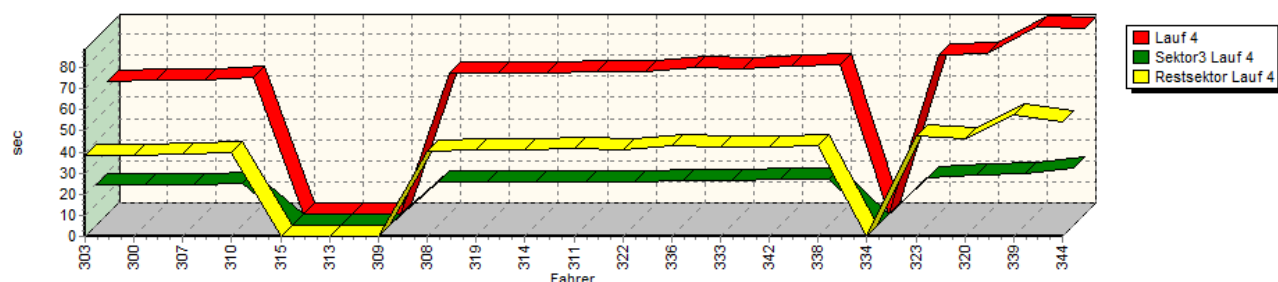
Speed-Diagramm Lauf 4



Sektor-Diagramm (Start) Lauf 4



Sektor-Diagramm (Rest) Lauf 4



Rg.	Nr.	Sektor 1 (50m)	Sektor 2 (50-100m)	Sektor 3	Speed Trap	Sektor 4	Speed (Ziel)	Laufzeit	Speed (Lauf)	
1	303	WEIDINGER Jörg		BMW 318i E36 STW						
		Lauf 1:	00:03.727	00:01.688	00:19.652	161,08 km/h	00:37.793	139,43 km/h	01:02.860	116,26 km/h
		Lauf 2:	00:04.069	00:01.750	00:19.648	160,39 km/h	00:38.092	133,55 km/h	01:03.559	114,98 km/h
		Lauf 3:	00:04.006	00:01.754	00:19.638	159,52 km/h	00:38.670	134,90 km/h	01:04.068	114,07 km/h
		Lauf 4:	00:03.568	00:01.668	00:19.407	160,41 km/h	00:38.087	135,09 km/h	01:02.730	116,50 km/h

Sektorzeiten & Speeds - Rennen - Gruppe H (DMSB) bis 2000 ccm - Klasse 36

Rg.	Nr.	Sektor 1 (50m)	Sektor 2 (50-100m)	Sektor 3	Speed Trap	Sektor 4	Speed (Ziel)	Laufzeit	Speed (Lauf)	
2	300	ELLER Hans-Peter		VW Minichberger Scirocco						
		Lauf 1:	00:03.732	00:01.740	00:19.591	158,74 km/h	00:38.235	133,61 km/h	01:03.298	115,45 km/h
		Lauf 2:	00:03.649	00:01.737	00:19.562	158,07 km/h	00:38.479	133,79 km/h	01:03.427	115,22 km/h
		Lauf 3:	00:03.682	00:01.747	00:19.622	157,69 km/h	00:38.929	131,29 km/h	01:03.980	114,22 km/h
		Lauf 4:	00:03.692	00:01.746	00:19.512	157,41 km/h	00:38.474	133,51 km/h	01:03.424	115,23 km/h
3	307	SCHMITT Sebastian		Opel Gerent Kadett C 16V						
		Lauf 1:	00:03.429	00:01.653	00:19.998	160,41 km/h	00:39.579	135,78 km/h	01:04.659	113,02 km/h
		Lauf 2:	00:03.446	00:01.649	00:19.667	160,15 km/h	00:39.204	135,61 km/h	01:03.966	114,25 km/h
		Lauf 3:	00:03.476	00:01.651	00:19.613	160,77 km/h	00:39.560	132,35 km/h	01:04.300	113,65 km/h
		Lauf 4:	00:03.397	00:01.636	00:19.458	159,77 km/h	00:39.166	136,75 km/h	01:03.657	114,80 km/h
4	310	SONDERBAUER Roman		Opel Risse Kadett C Coupé 16V						
		Lauf 1:	00:03.602	00:01.707	00:20.184	149,27 km/h	00:39.955	132,30 km/h	01:05.448	111,66 km/h
		Lauf 2:	00:03.522	00:01.701	00:20.090	153,27 km/h	00:39.936	131,59 km/h	01:05.249	112,00 km/h
		Lauf 3:	00:03.514	00:01.706	00:19.839	152,03 km/h	00:39.944	129,49 km/h	01:05.003	112,43 km/h
		Lauf 4:	00:03.633	00:01.751	00:20.081	151,46 km/h	00:39.636	132,62 km/h	01:05.101	112,26 km/h
5	315	ORTH Patrick		BMW E30 320is						
		Lauf 1:	00:03.648	00:01.806	00:20.306	148,54 km/h	00:39.745	124,44 km/h	01:05.505	111,56 km/h
		Lauf 2:	00:03.670	00:01.803	00:20.508	146,21 km/h	00:40.505	122,27 km/h	01:06.486	109,92 km/h
		Lauf 3:	00:03.622	00:01.834	00:20.793	138,11 km/h	00:45.762	98,90 km/h	01:12.011	101,49 km/h
		Lauf 4:	*	*	*	* km/h	*	* km/h	*	* km/h
6	313	KROLL Ralf		VW Lehmann Golf 16V						
		Lauf 1:	00:03.733	00:01.753	00:19.873	155,73 km/h	00:40.287	130,84 km/h	01:05.646	111,33 km/h
		Lauf 2:	00:04.451	00:02.133	00:25.853	109,96 km/h	00:58.180	79,40 km/h	01:30.617	80,65 km/h
		Lauf 3:	*	*	*	* km/h	*	* km/h	*	* km/h
		Lauf 4:	*	*	*	* km/h	*	* km/h	*	* km/h
7	309	FAULHABER Stefan		Opel Briegel Kadett C 8V						
		Lauf 1:	00:03.634	00:01.928	00:20.701	144,49 km/h	00:40.235	126,07 km/h	01:06.498	109,90 km/h
		Lauf 2:	00:03.573	00:01.919	00:42.887	137,92 km/h	00:41.632	123,01 km/h	01:30.011	81,19 km/h
		Lauf 3:	*	*	*	* km/h	*	* km/h	*	* km/h
		Lauf 4:	*	*	*	* km/h	*	* km/h	*	* km/h
8	308	WEISS Werner		Ford Escort Zakspeed BDA						
		Lauf 1:	00:03.649	00:01.827	00:20.660	148,23 km/h	00:40.413	124,60 km/h	01:06.549	109,81 km/h
		Lauf 2:	00:03.620	00:01.812	00:20.804	149,28 km/h	00:40.680	126,42 km/h	01:06.916	109,21 km/h
		Lauf 3:	00:03.560	00:01.810	00:21.222	145,66 km/h	00:41.522	124,44 km/h	01:08.114	107,29 km/h
		Lauf 4:	00:03.599	00:01.802	00:20.801	149,53 km/h	00:40.306	126,64 km/h	01:06.508	109,88 km/h
9	319	BRÜGGE Frank		VW Golf						
		Lauf 1:	00:03.978	00:01.858	00:20.705	149,94 km/h	00:41.090	128,26 km/h	01:07.631	108,06 km/h
		Lauf 2:	00:03.901	00:01.812	00:20.653	150,34 km/h	00:41.058	127,75 km/h	01:07.424	108,39 km/h
		Lauf 3:	00:04.008	00:01.827	00:20.397	148,33 km/h	00:41.742	125,64 km/h	01:07.974	107,51 km/h
		Lauf 4:	00:03.877	00:01.842	00:20.476	150,11 km/h	00:40.709	126,08 km/h	01:06.904	109,23 km/h
10	314	WEBER Jens		Opel Kadett C 16V						
		Lauf 1:	00:03.561	00:01.837	00:20.816	147,62 km/h	00:41.702	121,10 km/h	01:07.916	107,60 km/h
		Lauf 2:	00:03.573	00:01.831	00:21.031	145,00 km/h	00:41.456	125,86 km/h	01:07.891	107,64 km/h
		Lauf 3:	00:03.577	00:01.853	00:20.771	145,10 km/h	00:41.139	123,06 km/h	01:07.340	108,52 km/h
		Lauf 4:	00:03.540	00:01.820	00:20.610	145,74 km/h	00:41.173	124,28 km/h	01:07.143	108,84 km/h

Sektorzeiten & Speeds - Rennen - Gruppe H (DMSB) bis 2000 ccm - Klasse 36

Rg.	Nr.		Sektor 1 (50m)	Sektor 2 (50-100m)	Sektor 3	Speed Trap	Sektor 4	Speed (Ziel)	Laufzeit	Speed (Lauf)
11	311	FLIK Thomas		Renault Clio 16S Williams						
		Lauf 1:	00:03.756	00:01.821	00:20.659	148,97 km/h	00:41.139	125,15 km/h	01:07.375	108,47 km/h
		Lauf 2:	00:03.675	00:01.826	00:20.662	147,93 km/h	00:42.031	126,31 km/h	01:08.194	107,17 km/h
		Lauf 3:	00:03.760	00:01.823	00:20.668	148,30 km/h	00:42.069	124,80 km/h	01:08.320	106,97 km/h
		Lauf 4:	00:03.783	00:01.803	00:20.324	148,83 km/h	00:41.434	120,74 km/h	01:07.344	108,52 km/h
12	322	LORIG Ingo		VW Golf I						
		Lauf 1:	00:03.874	00:01.932	00:20.861	145,83 km/h	00:40.850	123,25 km/h	01:07.517	108,24 km/h
		Lauf 2:	00:03.913	00:01.910	00:20.807	143,80 km/h	00:41.932	121,27 km/h	01:08.562	106,59 km/h
		Lauf 3:	00:03.933	00:01.912	00:20.811	143,32 km/h	00:41.329	121,15 km/h	01:07.985	107,49 km/h
		Lauf 4:	00:03.743	00:01.881	00:20.760	132,14 km/h	00:41.233	120,98 km/h	01:07.617	108,08 km/h
13	336	LANG Bernhard		Ford Escort RS2000 Spezial						
		Lauf 1:	00:03.552	00:01.852	00:21.338	142,49 km/h	00:41.636	120,33 km/h	01:08.378	106,88 km/h
		Lauf 2:	00:03.459	00:01.840	00:21.342	140,55 km/h	00:42.347	118,71 km/h	01:08.988	105,93 km/h
		Lauf 3:	00:03.490	00:01.824	00:21.110	140,78 km/h	00:42.768	115,00 km/h	01:09.192	105,62 km/h
		Lauf 4:	00:03.465	00:01.825	00:21.268	140,56 km/h	00:42.951	117,76 km/h	01:09.509	105,14 km/h
14	333	HATEZIC Johann		Opel Ascona B 8V						
		Lauf 1:	00:03.712	00:01.916	00:21.498	140,64 km/h	00:42.635	114,29 km/h	01:09.761	104,76 km/h
		Lauf 2:	00:03.758	00:01.919	00:21.756	139,08 km/h	00:44.127	116,83 km/h	01:11.560	102,12 km/h
		Lauf 3:	00:03.730	00:01.912	00:21.409	141,65 km/h	00:42.946	110,13 km/h	01:09.997	104,41 km/h
		Lauf 4:	00:03.610	00:01.887	00:21.221	140,66 km/h	00:42.276	120,15 km/h	01:08.994	105,92 km/h
15	342	DÜMLER Christian		VW Golf II 8V						
		Lauf 1:	00:04.073	00:01.946	00:21.636	135,07 km/h	00:42.633	114,13 km/h	01:10.288	103,97 km/h
		Lauf 2:	00:03.894	00:01.925	00:21.749	137,03 km/h	00:42.626	117,88 km/h	01:10.194	104,11 km/h
		Lauf 3:	00:04.001	00:01.933	00:21.551	136,60 km/h	00:43.282	117,66 km/h	01:10.767	103,27 km/h
		Lauf 4:	00:03.965	00:01.924	00:22.041	137,42 km/h	00:42.522	117,84 km/h	01:10.452	103,73 km/h
16	338	ORTH Ralf		BMW E21 320i						
		Lauf 1:	00:04.012	00:02.116	00:22.632	132,60 km/h	00:44.450	115,46 km/h	01:13.210	99,82 km/h
		Lauf 2:	00:03.819	00:02.009	00:22.515	132,50 km/h	00:44.656	115,48 km/h	01:12.999	100,11 km/h
		Lauf 3:	00:03.668	00:02.006	00:22.173	133,15 km/h	00:43.345	111,89 km/h	01:11.192	102,65 km/h
		Lauf 4:	00:03.671	00:02.021	00:21.986	134,55 km/h	00:42.800	110,61 km/h	01:10.478	103,69 km/h
17	334	SEITZ Hans-Dieter		Ford Escort MKII						
		Lauf 1:	00:03.866	00:02.028	00:22.630	131,27 km/h	00:43.207	117,46 km/h	01:11.731	101,88 km/h
		Lauf 2:	00:03.807	00:02.014	00:22.729	130,39 km/h	00:43.227	115,64 km/h	01:11.777	101,82 km/h
		Lauf 3:	00:03.809	00:02.073	00:23.114	126,52 km/h	00:43.985	116,88 km/h	01:12.981	100,14 km/h
		Lauf 4:	*	*	*	* km/h	*	* km/h	*	* km/h
18	323	FLIK Beatrice		Renault Megane Cup						
		Lauf 1:	00:03.838	00:01.877	00:22.437	142,94 km/h	00:47.363	119,84 km/h	01:15.515	96,78 km/h
		Lauf 2:	00:03.825	00:01.862	00:22.724	139,05 km/h	00:48.150	118,21 km/h	01:16.561	95,45 km/h
		Lauf 3:	00:03.794	00:01.907	00:22.664	141,78 km/h	00:47.794	118,03 km/h	01:16.159	95,96 km/h
		Lauf 4:	00:03.773	00:01.876	00:22.364	141,10 km/h	00:47.499	120,87 km/h	01:15.512	96,78 km/h
19	320	SCHWANECKE Gero		VW Escher Golf I GTI 16 V						
		Lauf 1:	00:03.907	00:02.063	00:24.283	130,54 km/h	00:48.211	112,90 km/h	01:18.464	93,14 km/h
		Lauf 2:	00:03.918	00:02.029	00:23.768	130,51 km/h	00:47.541	112,03 km/h	01:17.256	94,59 km/h
		Lauf 3:	00:04.110	00:02.078	00:24.171	128,16 km/h	00:48.813	106,53 km/h	01:19.172	92,31 km/h
		Lauf 4:	00:03.888	00:02.044	00:23.680	132,62 km/h	00:46.583	113,37 km/h	01:16.195	95,91 km/h

Sektorzeiten & Speeds - Rennen - Gruppe H (DMSB) bis 2000 ccm - Klasse 36

Rg.	Nr.		Sektor 1 (50m)	Sektor 2 (50-100m)	Sektor 3	Speed Trap	Sektor 4	Speed (Ziel)	Laufzeit	Speed (Lauf)
20	339	GÜRTZGEN Friedhelm		BWM 318ti						
		Lauf 1:	00:04.325	00:02.332	00:24.957	117,85 km/h	00:47.553	103,13 km/h	01:19.167	92,31 km/h
		Lauf 2:	00:04.284	00:02.332	00:24.870	119,71 km/h	00:47.791	105,85 km/h	01:19.277	92,18 km/h
		Lauf 3:	00:04.207	00:02.335	00:24.661	118,06 km/h	00:47.137	103,51 km/h	01:18.340	93,29 km/h
		Lauf 4:	00:04.100	00:02.281	00:24.732	118,50 km/h	00:57.562	69,46 km/h	01:28.675	82,41 km/h
21	344	RUWE Mario		BMW 318is						
		Lauf 1:	00:04.534	00:02.670	00:27.109	117,49 km/h	00:53.592	99,80 km/h	01:27.905	83,14 km/h
		Lauf 2:	00:04.331	00:02.272	00:26.463	116,50 km/h	00:53.634	98,90 km/h	01:26.700	84,29 km/h
		Lauf 3:	00:04.187	00:02.209	00:26.575	114,85 km/h	00:55.542	98,66 km/h	01:28.513	82,56 km/h
		Lauf 4:	00:04.295	00:02.252	00:27.254	113,84 km/h	00:54.123	100,05 km/h	01:27.924	83,12 km/h