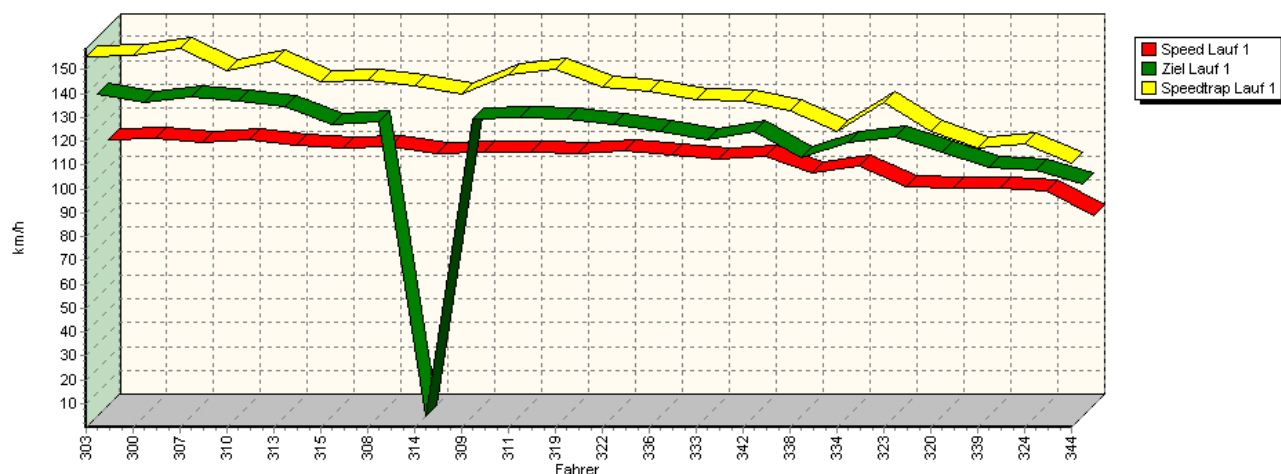
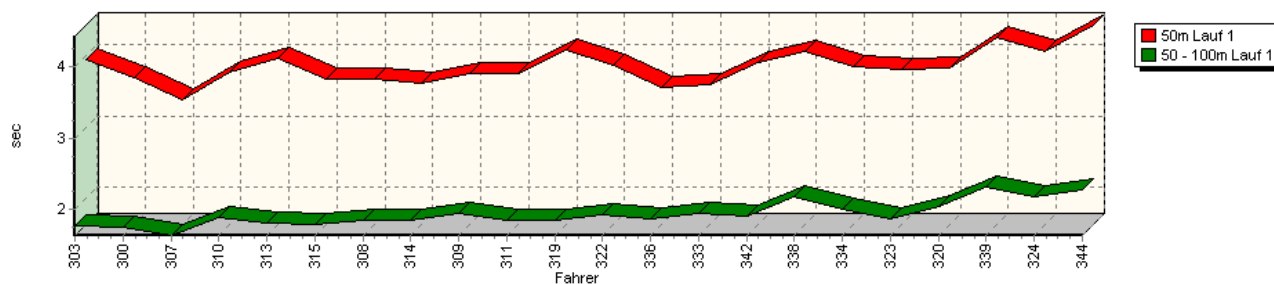


Sektorzeiten & Speeds - Training - Gruppe H (DMSB) bis 2000 ccm - Klasse 36

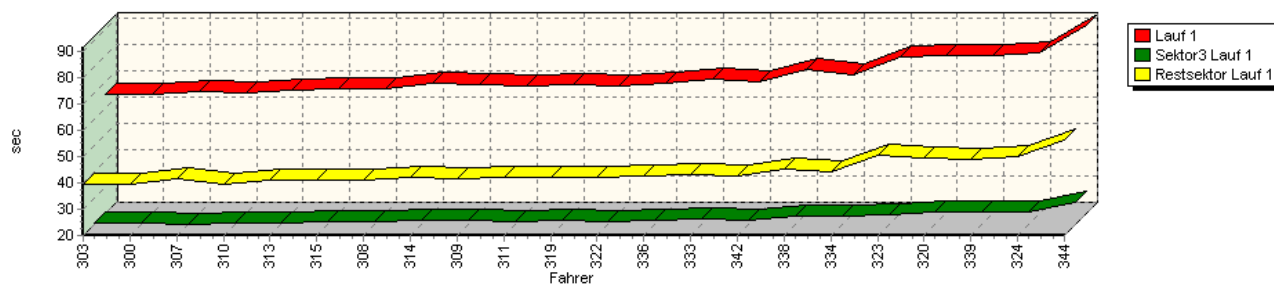
Speed-Diagramm Lauf 1



Sektor-Diagramm (Start) Lauf 1

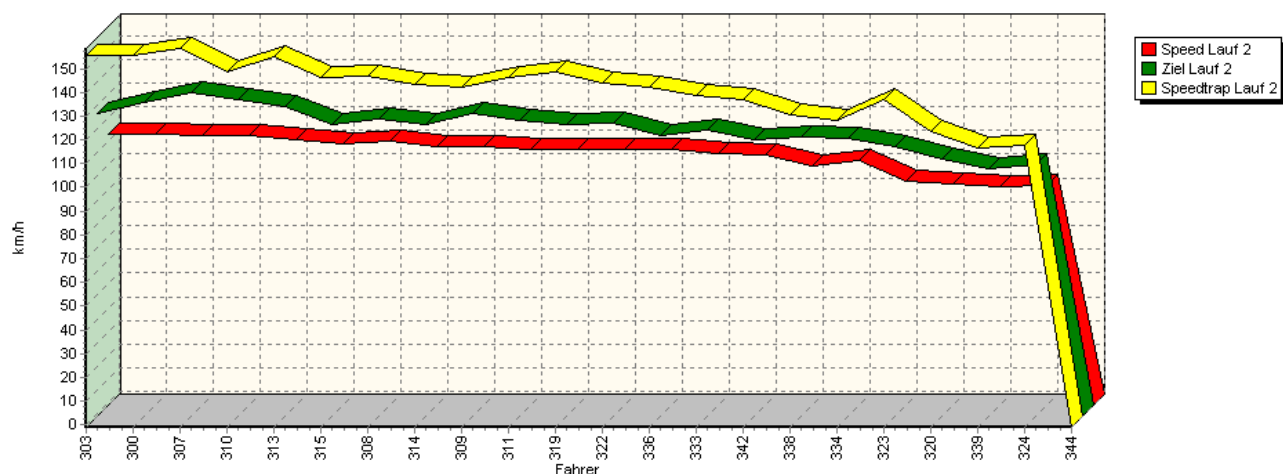


Sektor-Diagramm (Rest) Lauf 1

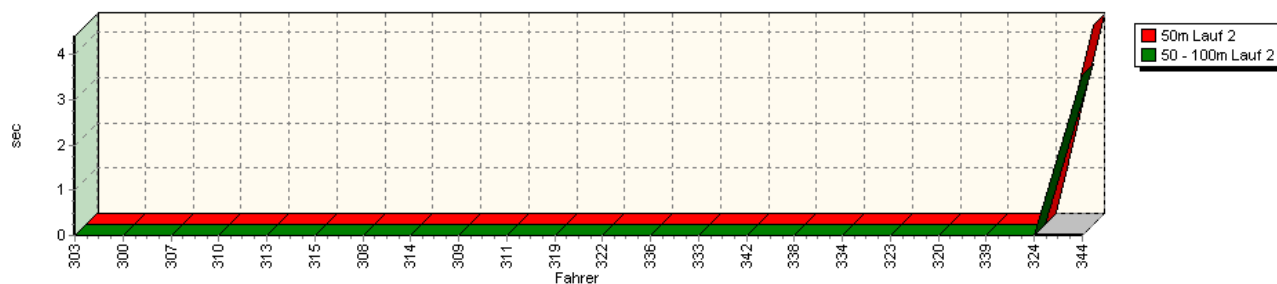


Sektorzeiten & Speeds - Training - Gruppe H (DMSB) bis 2000 ccm - Klasse 36

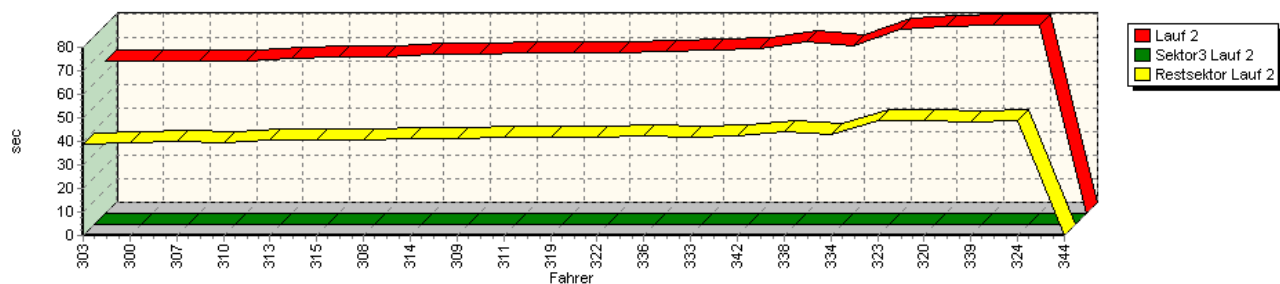
Speed-Diagramm Lauf 2



Sektor-Diagramm (Start) Lauf 2

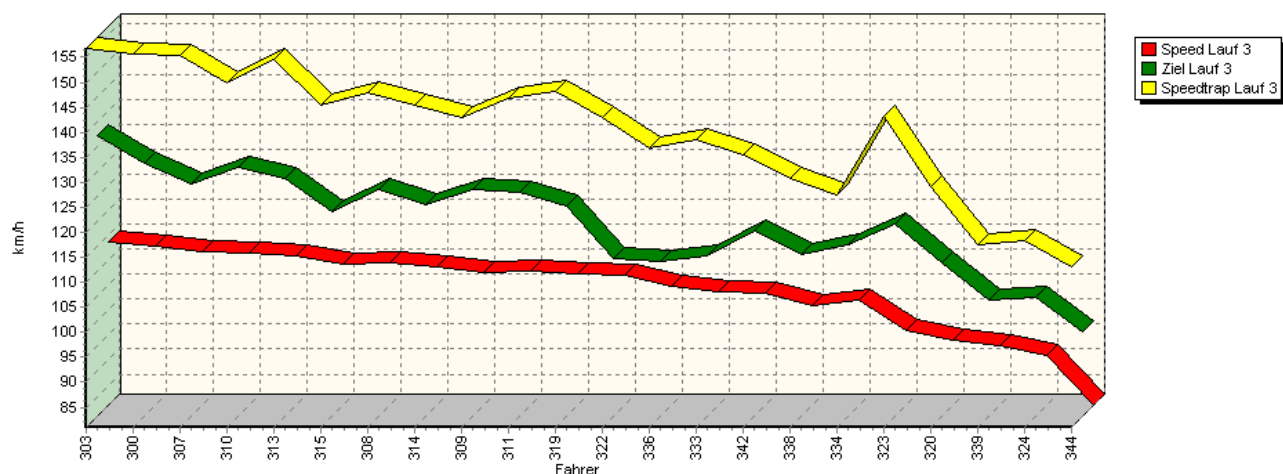


Sektor-Diagramm (Rest) Lauf 2

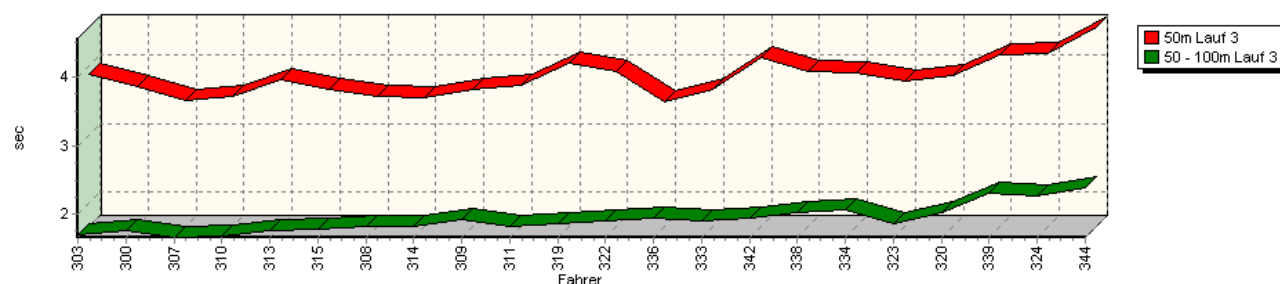


Sektorzeiten & Speeds - Training - Gruppe H (DMSB) bis 2000 ccm - Klasse 36

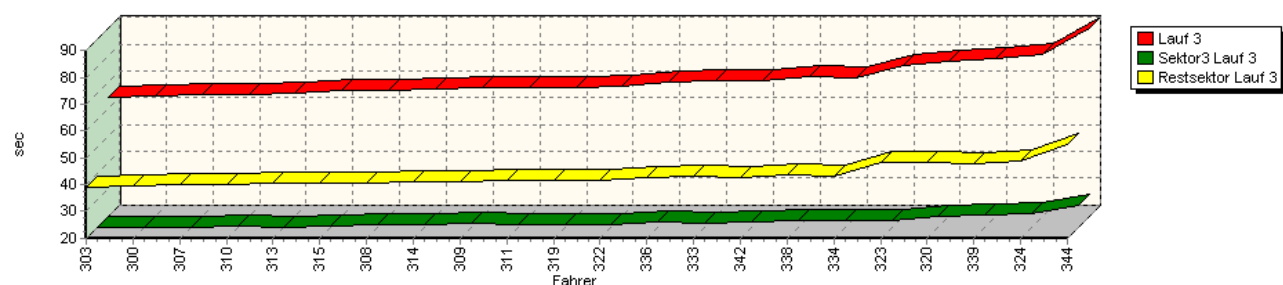
Speed-Diagramm Lauf 3



Sektor-Diagramm (Start) Lauf 3

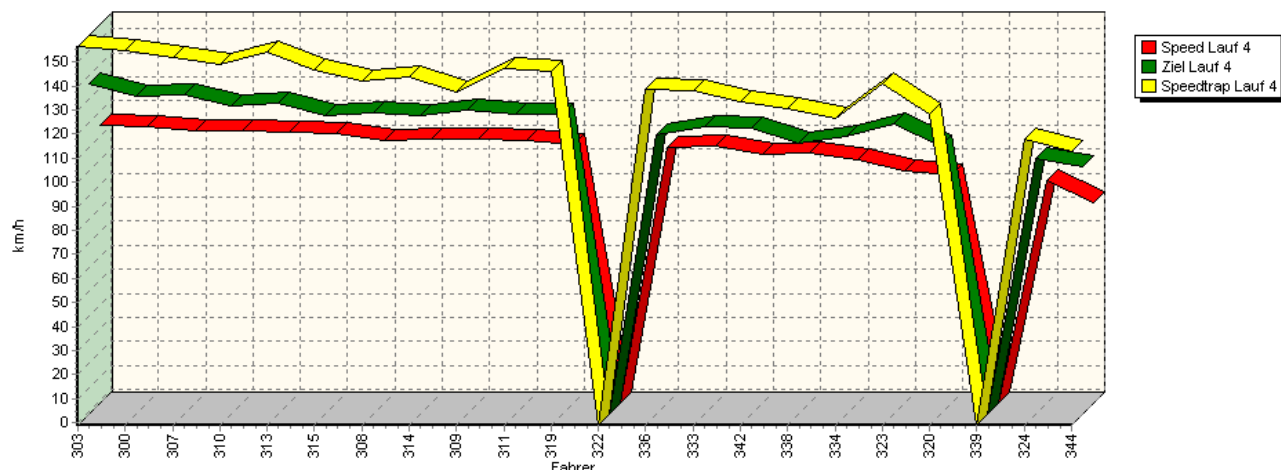


Sektor-Diagramm (Rest) Lauf 3

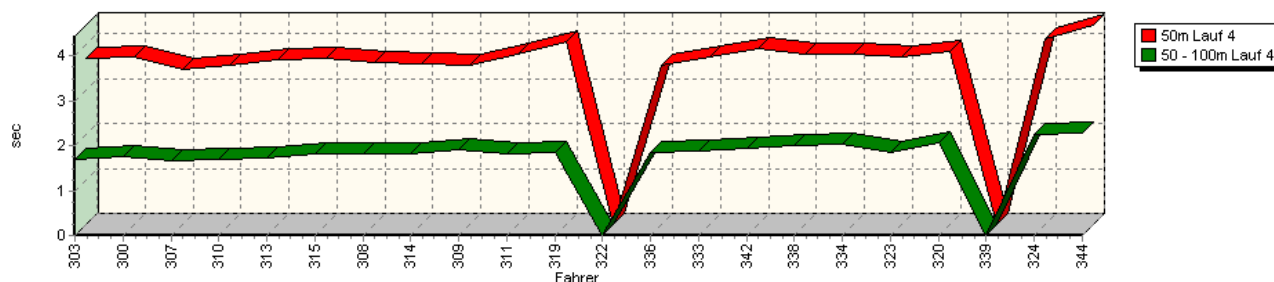


Sektorzeiten & Speeds - Training - Gruppe H (DMSB) bis 2000 ccm - Klasse 36

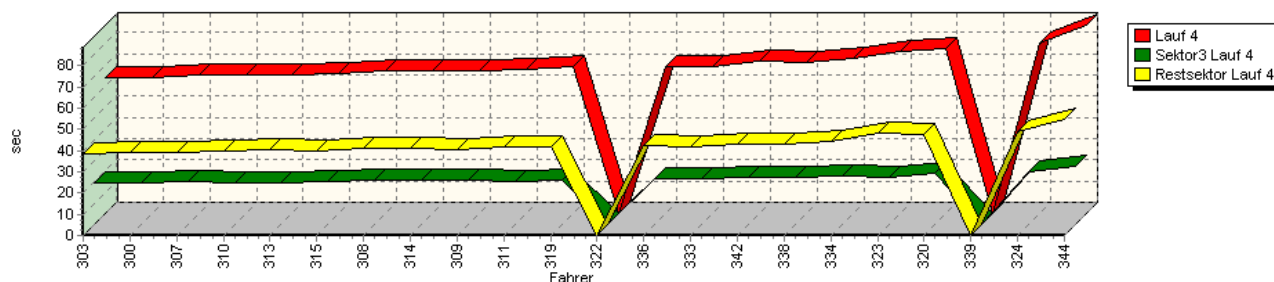
Speed-Diagramm Lauf 4



Sektor-Diagramm (Start) Lauf 4



Sektor-Diagramm (Rest) Lauf 4



Rg.	Nr.	Sektor 1 (50m)	Sektor 2 (50-100m)	Sektor 3	Speed Trap	Sektor 4	Speed (Ziel)	Laufzeit	Speed (Lauf)
1	303	WEIDINGER Jörg							
		BMW 318i E36 STW							
	Lauf 1:	00:03.938	00:01.787	00:20.272	155,37 km/h	00:39.558	135,32 km/h	01:05.555	111,48 km/h
	Lauf 2:	*	*	*	155,79 km/h	00:39.012	126,57 km/h	01:04.661	113,02 km/h
	Lauf 3:	00:03.893	00:01.704	00:19.841	156,79 km/h	00:38.800	137,10 km/h	01:04.238	113,76 km/h
	Lauf 4:	00:03.691	00:01.683	00:19.732	156,50 km/h	00:38.744	136,54 km/h	01:03.850	114,46 km/h

Sektorzeiten & Speeds - Training - Gruppe H (DMSB) bis 2000 ccm - Klasse 36

Rg.	Nr.		Sektor 1 (50m)	Sektor 2 (50-100m)	Sektor 3	Speed Trap	Sektor 4	Speed (Ziel)	Laufzeit	Speed (Lauf)
2	300	ELLER Hans-Peter		VW Minichberger Scirocco						
		Lauf 1:	00:03.695	00:01.750	00:20.271	155,99 km/h	00:39.660	131,73 km/h	01:05.376	111,78 km/h
		Lauf 2:	*	*	*	155,45 km/h	00:39.216	131,01 km/h	01:04.632	113,07 km/h
		Lauf 3:	00:03.708	00:01.762	00:19.912	155,76 km/h	00:39.429	131,51 km/h	01:04.811	112,76 km/h
		Lauf 4:	00:03.744	00:01.762	00:19.774	154,93 km/h	00:38.902	131,49 km/h	01:04.182	113,86 km/h
3	307	SCHMITT Sebastian		Opel Gerent Kadett C 16V						
		Lauf 1:	00:03.377	00:01.643	00:19.971	158,85 km/h	00:41.437	133,72 km/h	01:06.428	110,01 km/h
		Lauf 2:	*	*	*	158,49 km/h	00:40.225	135,10 km/h	01:05.039	112,36 km/h
		Lauf 3:	00:03.499	00:01.667	00:20.042	155,40 km/h	00:40.245	127,34 km/h	01:05.453	111,65 km/h
		Lauf 4:	00:03.461	00:01.667	00:20.408	151,94 km/h	00:39.418	131,57 km/h	01:04.954	112,51 km/h
4	310	SONDERBAUER Roman		Opel Risse Kadett C Coupé 16V						
		Lauf 1:	00:03.767	00:01.890	00:20.370	149,60 km/h	00:39.727	132,27 km/h	01:05.754	111,14 km/h
		Lauf 2:	*	*	*	148,51 km/h	00:39.686	132,28 km/h	01:05.103	112,25 km/h
		Lauf 3:	00:03.571	00:01.697	00:20.149	149,98 km/h	00:40.184	130,91 km/h	01:05.601	111,40 km/h
		Lauf 4:	00:03.559	00:01.696	00:19.873	149,10 km/h	00:39.947	127,11 km/h	01:05.075	112,30 km/h
5	313	KROLL Ralf		VW Lehmann Golf 16V						
		Lauf 1:	00:03.962	00:01.807	00:20.378	153,47 km/h	00:40.885	129,76 km/h	01:07.032	109,02 km/h
		Lauf 2:	*	*	*	154,80 km/h	00:40.436	129,13 km/h	01:05.932	110,84 km/h
		Lauf 3:	00:03.807	00:01.760	00:20.016	154,48 km/h	00:40.328	128,70 km/h	01:05.911	110,88 km/h
		Lauf 4:	00:03.664	00:01.742	00:19.824	154,40 km/h	00:40.270	128,47 km/h	01:05.500	111,57 km/h
6	315	ORTH Patrick		BMW E30 320is						
		Lauf 1:	00:03.675	00:01.802	00:20.973	144,86 km/h	00:41.168	122,56 km/h	01:07.618	108,08 km/h
		Lauf 2:	*	*	*	146,54 km/h	00:40.849	121,69 km/h	01:06.888	109,26 km/h
		Lauf 3:	00:03.665	00:01.785	00:20.615	145,52 km/h	00:40.804	121,80 km/h	01:06.869	109,29 km/h
		Lauf 4:	00:03.697	00:01.817	00:20.375	146,53 km/h	00:39.939	123,24 km/h	01:05.828	111,02 km/h
7	308	WEISS Werner		Ford Escort Zakspeed BDA						
		Lauf 1:	00:03.673	00:01.850	00:20.911	145,24 km/h	00:41.006	123,40 km/h	01:07.440	108,36 km/h
		Lauf 2:	*	*	*	146,93 km/h	00:40.424	124,14 km/h	01:06.434	110,00 km/h
		Lauf 3:	00:03.560	00:01.824	00:20.738	147,98 km/h	00:40.634	126,35 km/h	01:06.756	109,47 km/h
		Lauf 4:	00:03.606	00:01.822	00:20.684	142,02 km/h	00:41.320	124,43 km/h	01:07.432	108,37 km/h
8	314	WEBER Jens		Opel Kadett C 16V						
		Lauf 1:	00:03.601	00:01.851	00:21.666	143,16 km/h	00:42.200	0,08 km/h	01:09.318	105,43 km/h
		Lauf 2:	*	*	*	143,34 km/h	00:41.331	121,92 km/h	01:07.792	107,80 km/h
		Lauf 3:	00:03.532	00:01.824	00:20.892	145,32 km/h	00:40.994	123,42 km/h	01:07.242	108,68 km/h
		Lauf 4:	00:03.584	00:01.827	00:20.757	143,58 km/h	00:40.855	123,11 km/h	01:07.023	109,04 km/h
9	309	FAULHABER Stefan		Opel Briegel Kadett C 8V						
		Lauf 1:	00:03.736	00:01.944	00:21.535	139,82 km/h	00:41.714	124,39 km/h	01:08.929	106,02 km/h
		Lauf 2:	*	*	*	142,45 km/h	00:41.108	126,26 km/h	01:07.887	107,65 km/h
		Lauf 3:	00:03.669	00:01.934	00:21.209	142,95 km/h	00:41.220	126,37 km/h	01:08.032	107,42 km/h
		Lauf 4:	00:03.542	00:01.918	00:21.146	137,40 km/h	00:40.489	125,68 km/h	01:07.095	108,92 km/h
10	311	FLIK Thomas		Renault Clio 16S Williams						
		Lauf 1:	00:03.740	00:01.848	00:20.916	147,56 km/h	00:42.210	125,02 km/h	01:08.714	106,35 km/h
		Lauf 2:	*	*	*	146,53 km/h	00:42.008	123,69 km/h	01:08.390	106,86 km/h
		Lauf 3:	00:03.715	00:01.831	00:20.646	146,72 km/h	00:41.653	125,84 km/h	01:07.845	107,72 km/h
		Lauf 4:	00:03.788	00:01.808	00:20.525	147,47 km/h	00:41.452	123,48 km/h	01:07.573	108,15 km/h

Sektorzeiten & Speeds - Training - Gruppe H (DMSB) bis 2000 ccm - Klasse 36

Rg.	Nr.		Sektor 1 (50m)	Sektor 2 (50-100m)	Sektor 3	Speed Trap	Sektor 4	Speed (Ziel)	Laufzeit	Speed (Lauf)
11	319	BRÜGGE Frank		VW Golf						
		Lauf 1:	00:04.079	00:01.853	00:21.308	150,39 km/h	00:41.913	124,44 km/h	01:09.153	105,68 km/h
		Lauf 2:	*	*	*	148,76 km/h	00:41.754	121,74 km/h	01:08.332	106,95 km/h
		Lauf 3:	00:04.045	00:01.860	00:20.688	148,19 km/h	00:41.607	123,09 km/h	01:08.200	107,16 km/h
		Lauf 4:	00:04.077	00:01.851	00:20.922	145,98 km/h	00:41.957	123,91 km/h	01:08.807	106,21 km/h
12	322	LORIG Ingo		VW Golf I						
		Lauf 1:	00:03.853	00:01.936	00:20.865	142,43 km/h	00:41.893	122,10 km/h	01:08.547	106,61 km/h
		Lauf 2:	*	*	*	143,78 km/h	00:41.614	122,17 km/h	01:08.564	106,59 km/h
		Lauf 3:	00:03.926	00:01.915	00:20.956	142,94 km/h	00:41.531	112,53 km/h	01:08.328	106,95 km/h
		Lauf 4:	*	*	*	* km/h	*	* km/h	*	* km/h
13	336	LANG Bernhard		Ford Escort RS2000 Spezial						
		Lauf 1:	00:03.545	00:01.873	00:21.538	140,89 km/h	00:42.681	119,31 km/h	01:09.637	104,94 km/h
		Lauf 2:	*	*	*	142,00 km/h	00:42.166	117,35 km/h	01:08.679	106,41 km/h
		Lauf 3:	00:03.476	00:01.957	00:21.866	136,91 km/h	00:42.526	111,88 km/h	01:09.825	104,66 km/h
		Lauf 4:	00:03.540	00:01.865	00:21.570	138,74 km/h	00:42.338	115,33 km/h	01:09.313	105,43 km/h
14	333	HATEZIC Johann		Opel Ascona B 8V						
		Lauf 1:	00:03.594	00:01.945	00:22.067	137,23 km/h	00:43.368	116,09 km/h	01:10.974	102,97 km/h
		Lauf 2:	*	*	*	138,55 km/h	00:41.895	119,77 km/h	01:09.459	105,21 km/h
		Lauf 3:	00:03.657	00:01.900	00:21.570	138,43 km/h	00:43.353	113,17 km/h	01:10.480	103,69 km/h
		Lauf 4:	00:03.746	00:01.890	00:21.586	138,10 km/h	00:41.747	118,78 km/h	01:08.969	105,96 km/h
15	342	DÜMLER Christian		VW Golf II 8V						
		Lauf 1:	00:03.906	00:01.911	00:21.748	137,06 km/h	00:42.593	119,73 km/h	01:10.158	104,16 km/h
		Lauf 2:	*	*	*	136,93 km/h	00:42.582	115,19 km/h	01:10.100	104,25 km/h
		Lauf 3:	00:04.130	00:01.952	00:21.656	135,46 km/h	00:42.847	118,02 km/h	01:10.585	103,53 km/h
		Lauf 4:	00:03.916	00:01.951	00:22.401	133,58 km/h	00:43.215	117,95 km/h	01:11.483	102,24 km/h
16	338	ORTH Ralf		BMW E21 320i						
		Lauf 1:	00:04.055	00:02.178	00:23.145	132,49 km/h	00:45.551	108,45 km/h	01:14.929	97,53 km/h
		Lauf 2:	*	*	*	130,80 km/h	00:44.125	116,35 km/h	01:13.126	99,94 km/h
		Lauf 3:	00:03.934	00:02.026	00:22.628	130,68 km/h	00:43.756	113,45 km/h	01:12.344	101,02 km/h
		Lauf 4:	00:03.807	00:01.999	00:22.351	130,36 km/h	00:42.941	111,92 km/h	01:11.098	102,79 km/h
17	334	SEITZ Hans-Dieter		Ford Escort MKII						
		Lauf 1:	00:03.846	00:02.014	00:22.944	123,97 km/h	00:44.186	115,01 km/h	01:12.990	100,12 km/h
		Lauf 2:	*	*	*	128,25 km/h	00:43.129	116,19 km/h	01:11.590	102,08 km/h
		Lauf 3:	00:03.908	00:02.079	00:22.442	127,46 km/h	00:43.299	115,20 km/h	01:11.728	101,88 km/h
		Lauf 4:	00:03.799	00:02.022	00:22.738	126,34 km/h	00:44.372	114,47 km/h	01:12.931	100,20 km/h
18	323	FLIK Beatrice		Renault Megane Cup						
		Lauf 1:	00:03.797	00:01.870	00:23.853	136,07 km/h	00:50.315	117,04 km/h	01:19.835	91,54 km/h
		Lauf 2:	*	*	*	137,16 km/h	00:49.080	112,74 km/h	01:18.279	93,36 km/h
		Lauf 3:	00:03.783	00:01.868	00:22.446	143,12 km/h	00:48.066	119,53 km/h	01:16.163	95,95 km/h
		Lauf 4:	00:03.744	00:01.865	00:22.460	140,71 km/h	00:48.490	119,43 km/h	01:16.559	95,46 km/h
19	320	SCHWANECKE Gero		VW Escher Golf I GTI 16 V						
		Lauf 1:	00:03.821	00:02.040	00:24.907	124,06 km/h	00:49.437	110,96 km/h	01:20.205	91,12 km/h
		Lauf 2:	*	*	*	123,79 km/h	00:48.796	106,98 km/h	01:19.376	92,07 km/h
		Lauf 3:	00:03.860	00:02.020	00:23.880	129,05 km/h	00:48.076	111,57 km/h	01:17.836	93,89 km/h
		Lauf 4:	00:03.863	00:02.056	00:24.099	128,25 km/h	00:47.880	110,56 km/h	01:17.898	93,82 km/h

Sektorzeiten & Speeds - Training - Gruppe H (DMSB) bis 2000 ccm - Klasse 36

Rg.	Nr.		Sektor 1 (50m)	Sektor 2 (50-100m)	Sektor 3	Speed Trap	Sektor 4	Speed (Ziel)	Laufzeit	Speed (Lauf)
20	339	GÜRTZGEN Friedhelm		BWM 318ti						
		Lauf 1:	00:04.238	00:02.316	00:24.896	117,38 km/h	00:48.863	104,35 km/h	01:20.313	90,99 km/h
		Lauf 2:	*	*	*	116,67 km/h	00:48.246	103,05 km/h	01:20.157	91,17 km/h
		Lauf 3:	00:04.171	00:02.313	00:24.645	117,44 km/h	00:47.619	104,20 km/h	01:18.748	92,80 km/h
		Lauf 4:	*	*	*	* km/h	*	* km/h	*	* km/h
21	324	ALT Holger		Ford Escort RS2000 16V						
		Lauf 1:	00:04.055	00:02.188	00:24.856	118,62 km/h	00:50.113	103,07 km/h	01:21.212	89,99 km/h
		Lauf 2:	*	*	*	117,77 km/h	00:48.955	104,75 km/h	01:19.879	91,49 km/h
		Lauf 3:	00:04.185	00:02.281	00:24.805	118,38 km/h	00:49.015	104,90 km/h	01:20.286	91,02 km/h
		Lauf 4:	00:04.124	00:02.246	00:24.807	118,22 km/h	00:48.768	105,42 km/h	01:19.945	91,41 km/h
22	344	RUWE Mario		BMW 318is						
		Lauf 1:	00:04.418	00:02.277	00:28.477	110,85 km/h	00:56.548	97,58 km/h	01:31.720	79,68 km/h
		Lauf 2:	00:04.407	00:03.560	*	* km/h	*	* km/h	A	* km/h
		Lauf 3:	00:04.570	00:02.385	00:27.984	113,07 km/h	00:55.297	97,89 km/h	01:30.236	80,99 km/h
		Lauf 4:	00:04.444	00:02.277	00:27.394	112,63 km/h	00:54.567	102,16 km/h	01:28.682	82,41 km/h