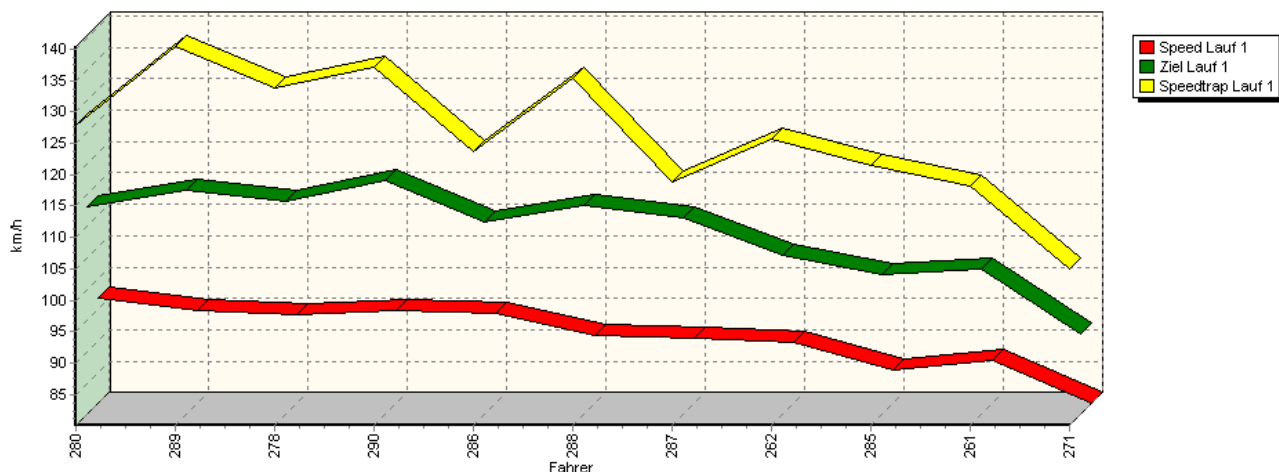
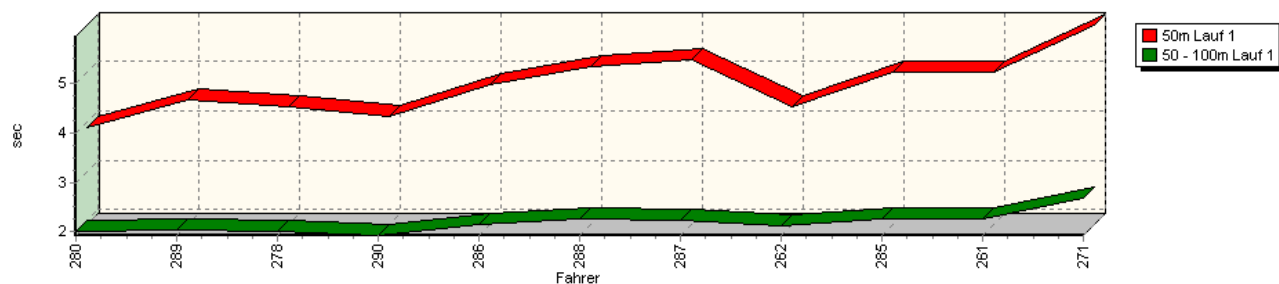


Sektorzeiten & Speeds - Rennen - Gruppe H bis 1300 ccm - Klasse 38

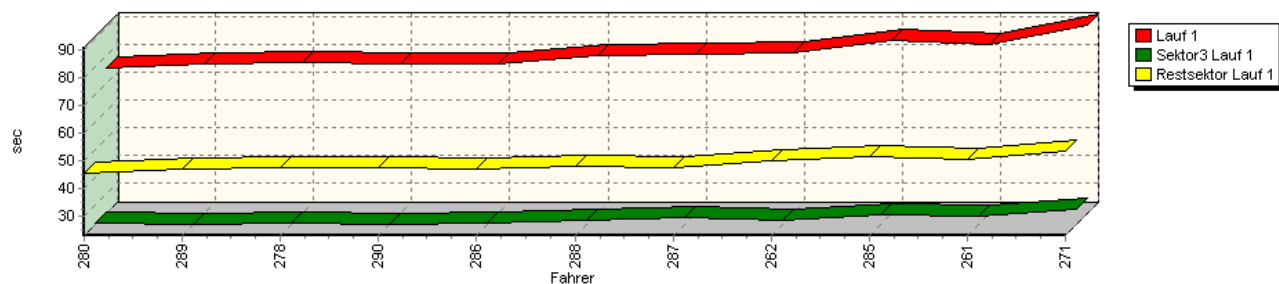
Speed-Diagramm Lauf 1



Sektor-Diagramm (Start) Lauf 1

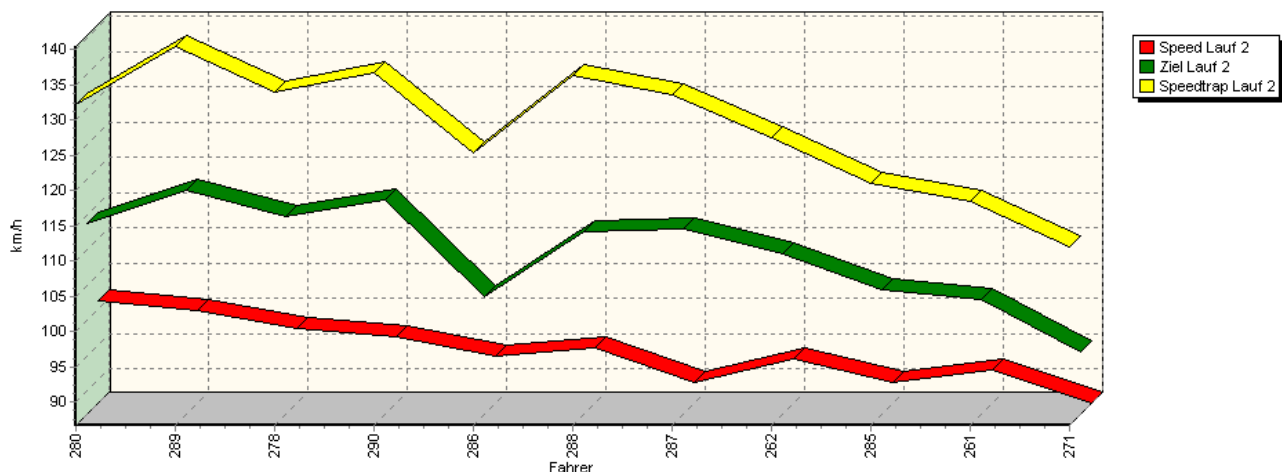


Sektor-Diagramm (Rest) Lauf 1

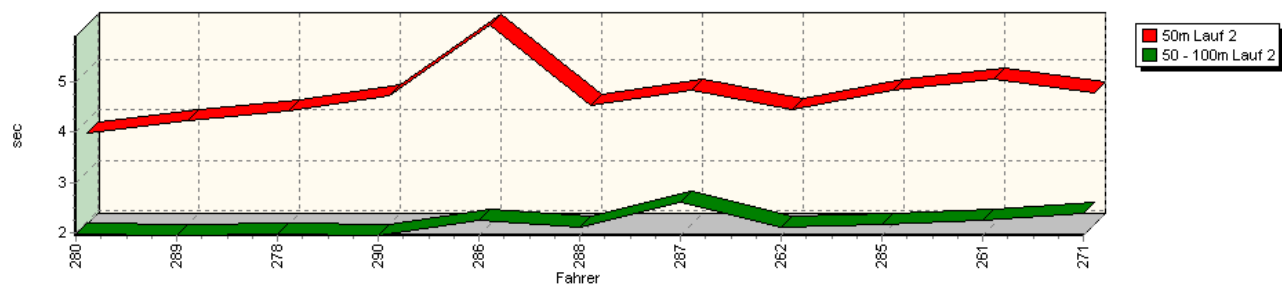


Sektorzeiten & Speeds - Rennen - Gruppe H bis 1300 ccm - Klasse 38

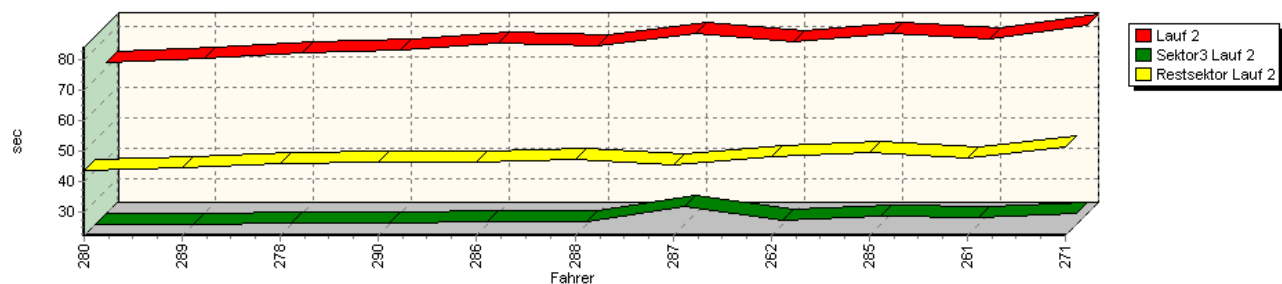
Speed-Diagramm Lauf 2



Sektor-Diagramm (Start) Lauf 2

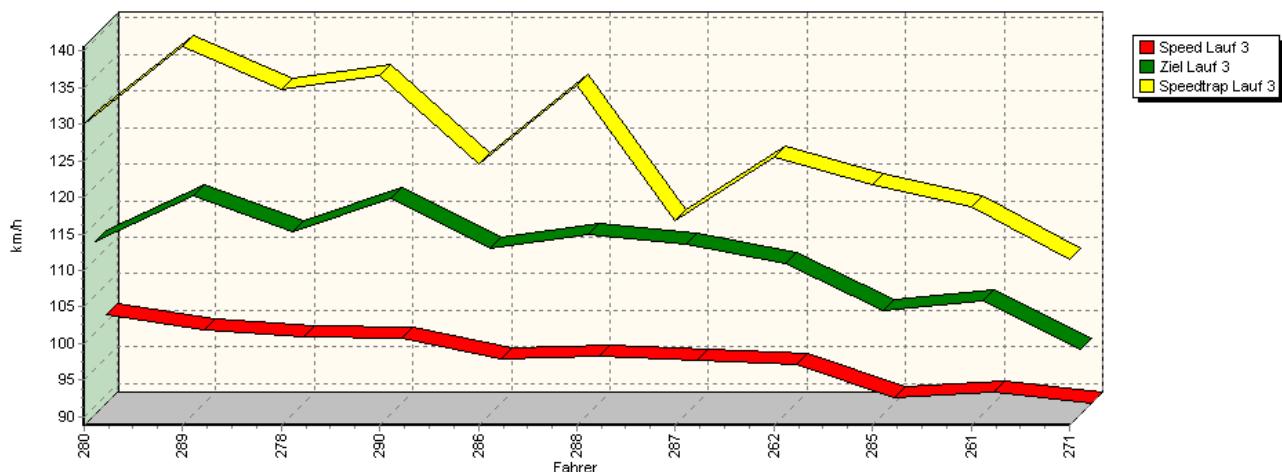


Sektor-Diagramm (Rest) Lauf 2

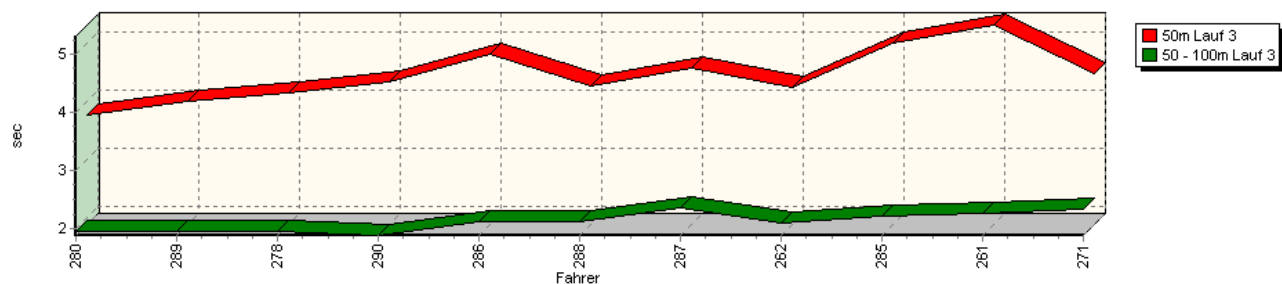


Sektorzeiten & Speeds - Rennen - Gruppe H bis 1300 ccm - Klasse 38

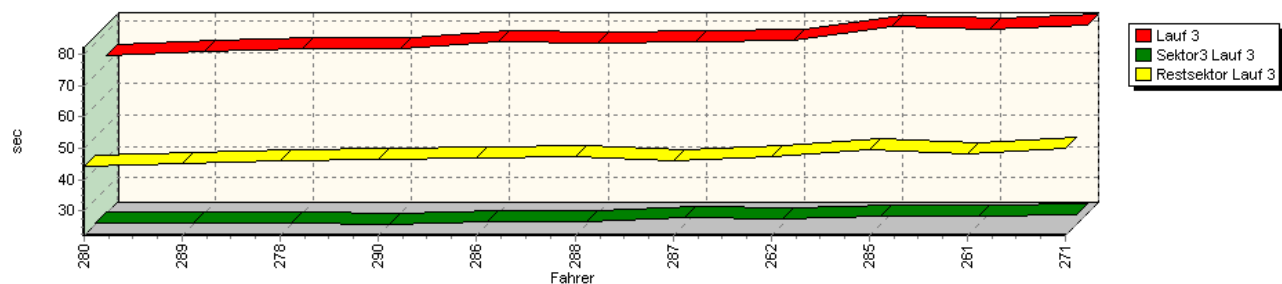
Speed-Diagramm Lauf 3



Sektor-Diagramm (Start) Lauf 3

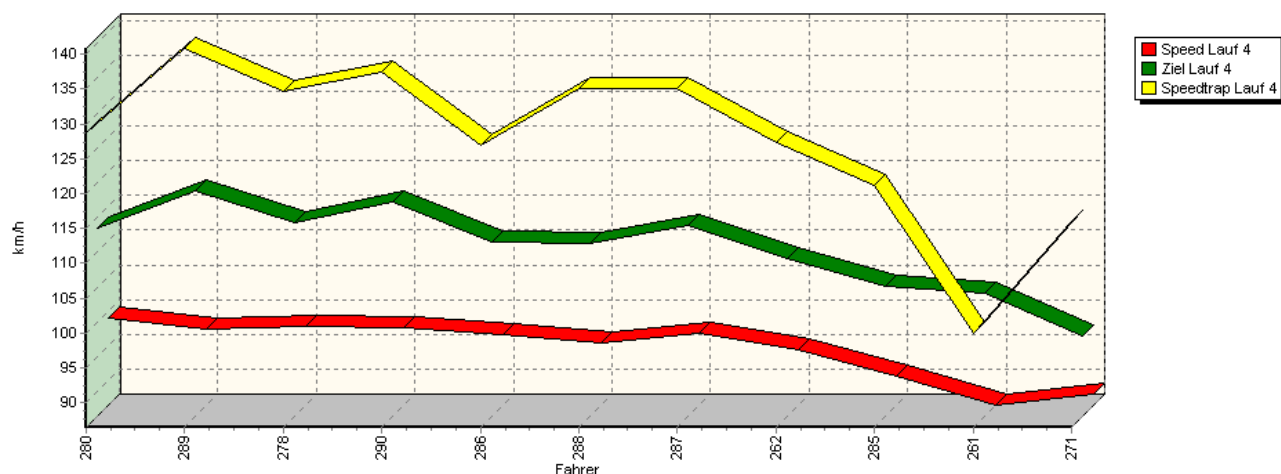


Sektor-Diagramm (Rest) Lauf 3

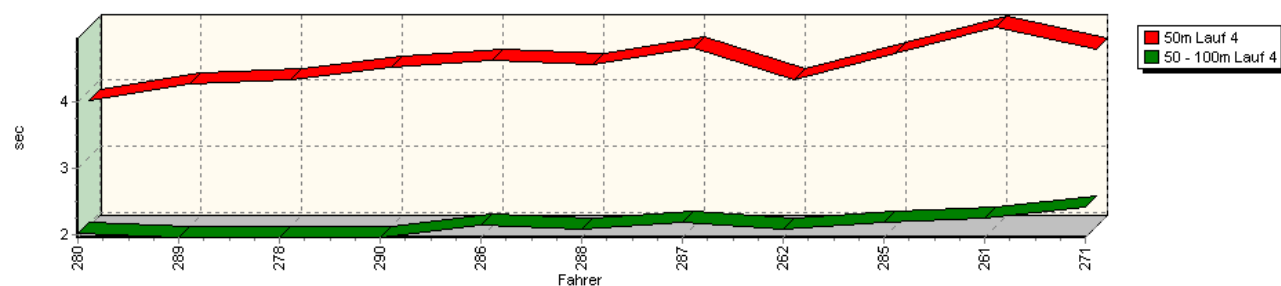


Sektorzeiten & Speeds - Rennen - Gruppe H bis 1300 ccm - Klasse 38

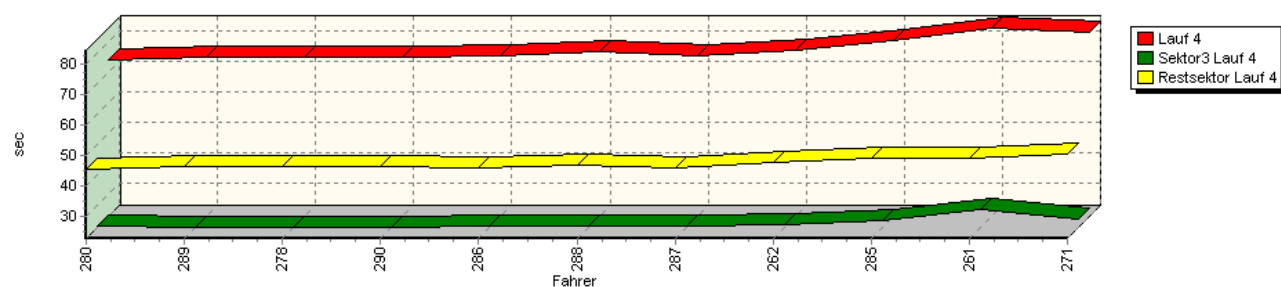
Speed-Diagramm Lauf 4



Sektor-Diagramm (Start) Lauf 4



Sektor-Diagramm (Rest) Lauf 4



Rg.	Nr.	Sektor 1 (50m)	Sektor 2 (50-100m)	Sektor 3	Speed Trap	Sektor 4	Speed (Ziel)	Laufzeit	Speed (Lauf)
1	280	SPÖRI Markus							
		Suzuki Swift GTI 16V 4WD							
	Lauf 1:	00:03.899	00:02.013	00:23.817	127,93 km/h	00:45.748	113,18 km/h	01:15.477	96,82 km/h
	Lauf 2:	00:03.763	00:01.986	00:22.450	132,19 km/h	00:44.043	113,68 km/h	01:12.242	101,16 km/h
	Lauf 3:	00:03.767	00:01.966	00:22.516	130,13 km/h	00:44.190	112,36 km/h	01:12.439	100,88 km/h
	Lauf 4:	00:03.856	00:02.014	00:22.835	128,68 km/h	00:45.173	113,38 km/h	01:13.878	98,92 km/h



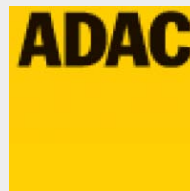
44. Osnabrücker ADAC Bergrennen

13. und 14. August 2011

Deutsche Bergmeisterschaft 2011

DMSB Bergpokal für Tourenwagen und Rennsportfahrzeuge

DMSB Classic-Berg-Pokal - KW Gruppe H Berg-Cup



Sektorzeiten & Speeds - Rennen - Gruppe H bis 1300 ccm - Klasse 38

Rg.	Nr.		Sektor 1 (50m)	Sektor 2 (50-100m)	Sektor 3	Speed Trap	Sektor 4	Speed (Ziel)	Laufzeit	Speed (Lauf)
2	289	KONRAD Manfred	VW Corrado							
		Lauf 1:	00:04.445	00:02.039	00:23.132	140,40 km/h	00:47.377	115,80 km/h	01:16.993	94,92 km/h
		Lauf 2:	00:04.022	00:01.951	00:22.478	140,40 km/h	00:44.815	118,42 km/h	01:13.266	99,75 km/h
		Lauf 3:	00:03.988	00:01.955	00:22.632	140,65 km/h	00:45.345	118,64 km/h	01:13.920	98,86 km/h
		Lauf 4:	00:04.117	00:01.969	00:22.665	140,84 km/h	00:46.265	118,88 km/h	01:15.016	97,42 km/h
3	278	STELBERG André	VW Schneider Polo I 16V							
		Lauf 1:	00:04.309	00:02.009	00:23.423	133,70 km/h	00:47.795	113,95 km/h	01:17.536	94,25 km/h
		Lauf 2:	00:04.187	00:01.975	00:22.678	133,96 km/h	00:46.302	114,64 km/h	01:15.142	97,26 km/h
		Lauf 3:	00:04.144	00:01.953	00:22.462	134,78 km/h	00:46.112	113,77 km/h	01:14.671	97,87 km/h
		Lauf 4:	00:04.176	00:01.969	00:22.546	134,61 km/h	00:46.072	114,33 km/h	01:14.763	97,75 km/h
4	290	WEIßDORN Franz	VW Polo 16V							
		Lauf 1:	00:04.102	00:01.925	00:23.219	137,02 km/h	00:47.805	117,40 km/h	01:17.051	94,85 km/h
		Lauf 2:	00:04.491	00:01.951	00:22.927	136,64 km/h	00:46.623	117,15 km/h	01:15.992	96,17 km/h
		Lauf 3:	00:04.325	00:01.889	00:22.190	136,77 km/h	00:46.420	118,37 km/h	01:14.824	97,67 km/h
		Lauf 4:	00:04.367	00:01.961	00:22.604	137,41 km/h	00:46.031	117,29 km/h	01:14.963	97,49 km/h
5	286	GÖTZL Helmut	VW Polo							
		Lauf 1:	00:04.752	00:02.154	00:23.513	123,69 km/h	00:46.936	110,76 km/h	01:17.355	94,47 km/h
		Lauf 2:	00:05.901	00:02.264	00:23.311	125,23 km/h	00:46.740	103,42 km/h	01:18.216	93,43 km/h
		Lauf 3:	00:04.815	00:02.119	00:23.222	124,50 km/h	00:46.877	111,48 km/h	01:17.033	94,87 km/h
		Lauf 4:	00:04.462	00:02.139	00:23.003	126,99 km/h	00:46.017	111,42 km/h	01:15.621	96,64 km/h
6	288	BERNERT Klaus	VW Polo 16V							
		Lauf 1:	00:05.131	00:02.253	00:24.884	135,27 km/h	00:48.147	113,33 km/h	01:20.415	90,88 km/h
		Lauf 2:	00:04.301	00:02.112	00:23.501	136,23 km/h	00:47.472	112,63 km/h	01:17.386	94,44 km/h
		Lauf 3:	00:04.256	00:02.126	00:23.110	135,27 km/h	00:47.231	113,32 km/h	01:16.723	95,25 km/h
		Lauf 4:	00:04.396	00:02.086	00:23.191	135,09 km/h	00:46.912	111,26 km/h	01:16.585	95,42 km/h
7	287	EBENHÖH Armin	VW Polo I Minichberger 16V							
		Lauf 1:	00:05.266	00:02.232	00:25.420	118,73 km/h	00:47.839	111,28 km/h	01:20.757	90,49 km/h
		Lauf 2:	00:04.623	00:02.596	00:28.418	133,51 km/h	00:45.851	113,02 km/h	01:21.488	89,68 km/h
		Lauf 3:	00:04.562	00:02.354	00:24.293	116,82 km/h	00:45.949	112,11 km/h	01:17.158	94,71 km/h
		Lauf 4:	00:04.644	00:02.180	00:22.953	135,09 km/h	00:45.785	113,75 km/h	01:15.562	96,72 km/h
8	262	LOHMANN Frank	VW Polo 8V							
		Lauf 1:	00:04.315	00:02.113	00:24.873	125,74 km/h	00:50.008	105,43 km/h	01:21.309	89,88 km/h
		Lauf 2:	00:04.229	00:02.111	00:23.941	127,44 km/h	00:48.374	109,49 km/h	01:18.655	92,91 km/h
		Lauf 3:	00:04.231	00:02.093	00:23.806	125,57 km/h	00:47.497	109,47 km/h	01:17.627	94,14 km/h
		Lauf 4:	00:04.166	00:02.085	00:23.664	127,29 km/h	00:47.555	109,04 km/h	01:17.470	94,33 km/h
9	285	SMYREK Jörg	Audi 50 8V							
		Lauf 1:	00:05.003	00:02.252	00:26.472	121,46 km/h	00:51.767	102,27 km/h	01:25.494	85,48 km/h
		Lauf 2:	00:04.612	00:02.177	00:24.993	121,09 km/h	00:49.753	104,34 km/h	01:21.535	89,63 km/h
		Lauf 3:	00:04.988	00:02.231	00:25.003	121,73 km/h	00:49.448	103,04 km/h	01:21.670	89,48 km/h
		Lauf 4:	00:04.575	00:02.184	00:24.693	121,23 km/h	00:49.185	105,02 km/h	01:20.637	90,63 km/h
10	261	TRIEBSTEIN Christian	VW Polo I 8V							
		Lauf 1:	00:05.024	00:02.255	00:26.304	118,18 km/h	00:50.488	103,25 km/h	01:24.071	86,93 km/h
		Lauf 2:	00:04.839	00:02.248	00:24.902	118,52 km/h	00:47.985	102,98 km/h	01:19.974	91,38 km/h
		Lauf 3:	00:05.304	00:02.268	00:24.846	118,68 km/h	00:48.460	104,39 km/h	01:20.878	90,36 km/h
		Lauf 4:	00:04.964	00:02.248	00:28.296	99,92 km/h	00:49.032	104,19 km/h	01:24.540	86,44 km/h



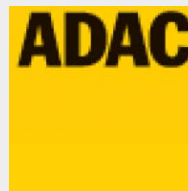
44. Osnabrücker ADAC Bergrennen

13. und 14. August 2011

Deutsche Bergmeisterschaft 2011

DMSB Bergpokal für Tourenwagen und Rennsportfahrzeuge

DMSB Classic-Berg-Pokal - KW Gruppe H Berg-Cup



Sektorzeiten & Speeds - Rennen - Gruppe H bis 1300 ccm - Klasse 38

Rg.	Nr.		Sektor 1 (50m)	Sektor 2 (50-100m)	Sektor 3	Speed Trap	Sektor 4	Speed (Ziel)	Laufzeit	Speed (Lauf)
11	271	EIRICH Raimund								
		VW Polo 86C 8V								
		Lauf 1:	00:05.968	00:02.692	00:28.884	105,03 km/h	00:53.693	92,83 km/h	01:31.237	80,10 km/h
		Lauf 2:	00:04.546	00:02.386	00:25.940	112,07 km/h	00:51.433	95,49 km/h	01:24.305	86,69 km/h
		Lauf 3:	00:04.465	00:02.350	00:25.334	111,58 km/h	00:50.146	97,70 km/h	01:22.295	88,80 km/h
		Lauf 4:	00:04.629	00:02.420	00:25.418	116,01 km/h	00:50.500	97,95 km/h	01:22.967	88,08 km/h