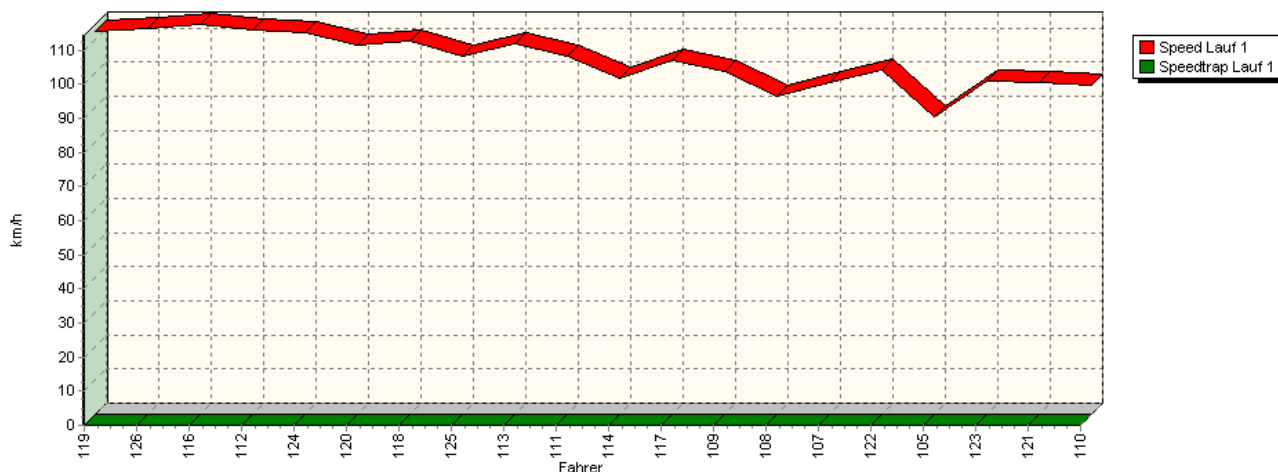
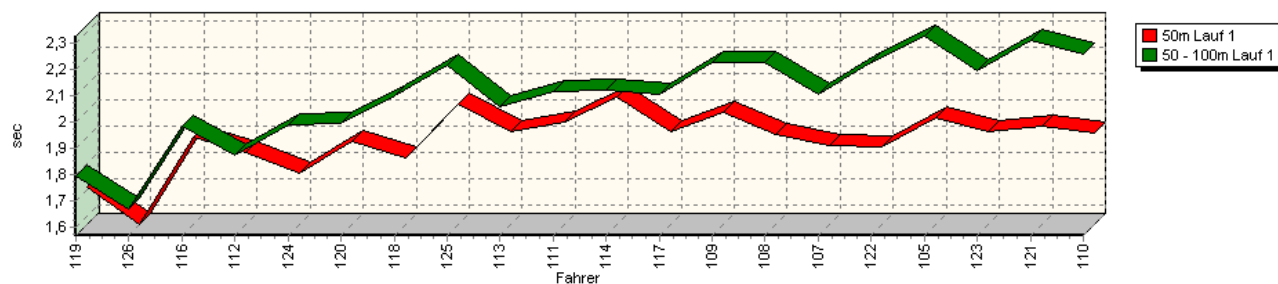


## Sektorzeiten & Speeds - Gruppe N, H/N (OSK), F (DMSB), CTC/CGT (DMSB Div. 6.1 + 9)

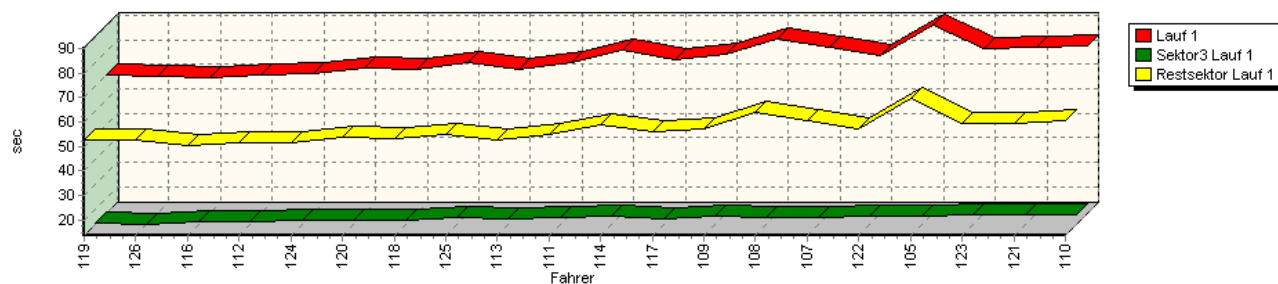
Speed-Diagramm Lauf 1



Sektor-Diagramm (Start) Lauf 1

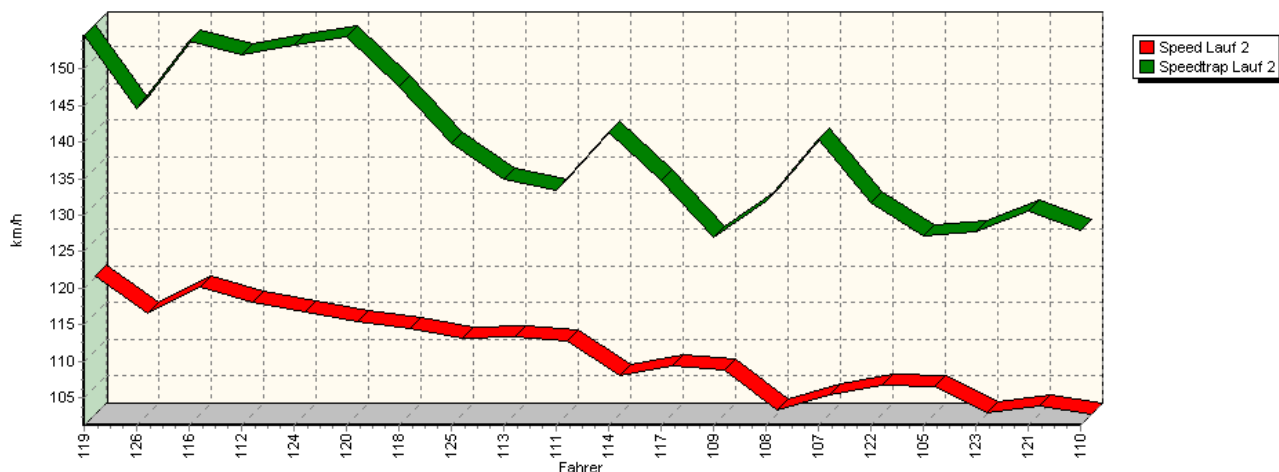


Sektor-Diagramm (Rest) Lauf 1

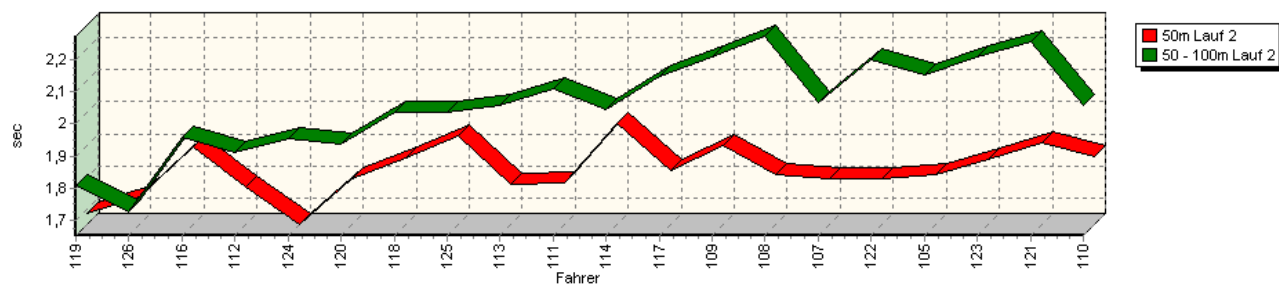


## Sektorzeiten & Speeds - Gruppe N, H/N (OSK), F (DMSB), CTC/CGT (DMSB Div. 6.1 + 9)

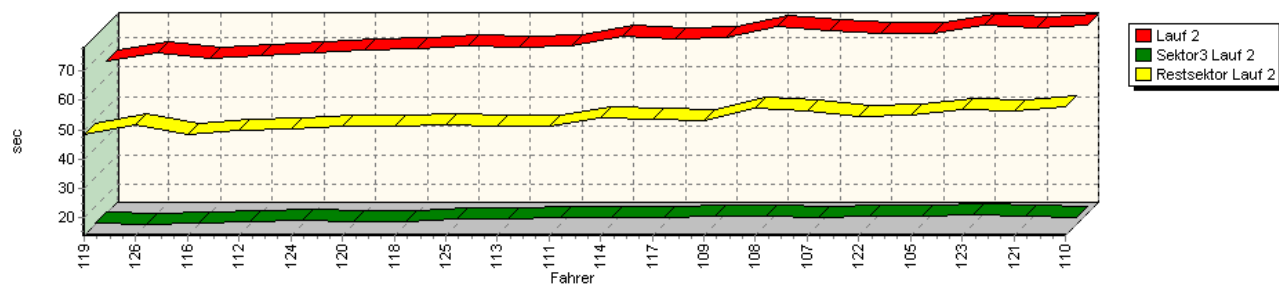
Speed-Diagramm Lauf 2



Sektor-Diagramm (Start) Lauf 2

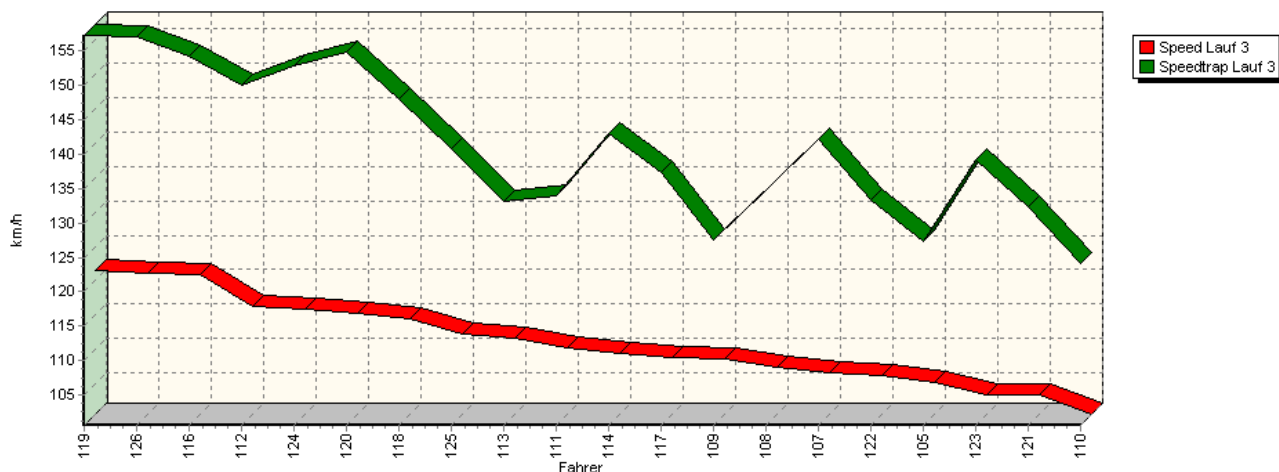


Sektor-Diagramm (Rest) Lauf 2

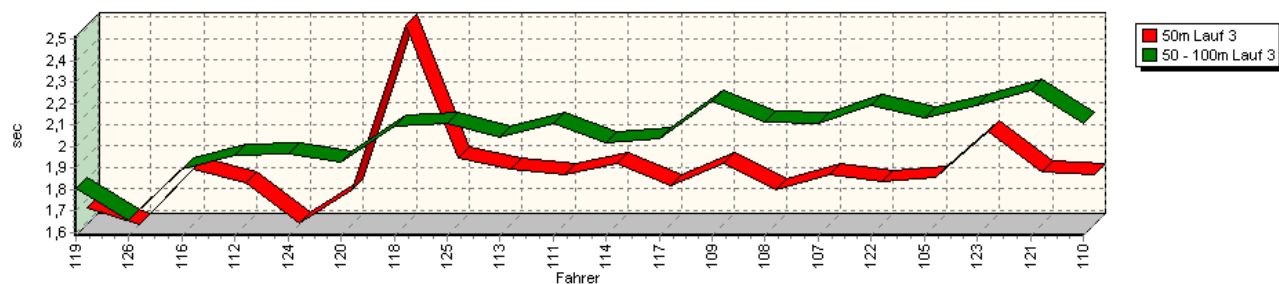


## Sektorzeiten & Speeds - Gruppe N, H/N (OSK), F (DMSB), CTC/CGT (DMSB Div. 6.1 + 9)

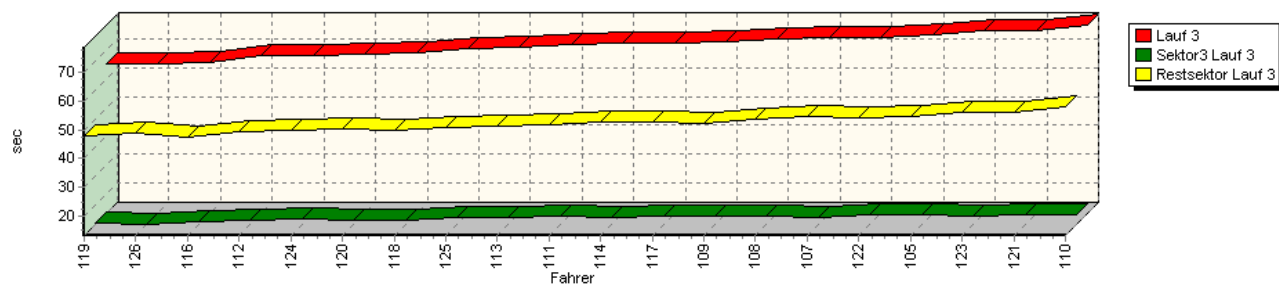
Speed-Diagramm Lauf 3



Sektor-Diagramm (Start) Lauf 3



Sektor-Diagramm (Rest) Lauf 3



Rg.	Nr.	Sektor 1 (15m)	Sektor 2 (15-50m)	Sektor 3	Speed Trap	Sektor 4	Laufzeit	Speed (Lauf)	
1	119	<b>STOLL Jochen</b>		Peugeot 306 s16					
		Lauf 1:	00:01.709	00:01.795	00:14.500	0,00 km/h	00:52.447	01:10.451	112,42 km/h
		Lauf 2:	00:01.688	00:01.808	00:14.135	154,61 km/h	00:48.269	01:05.900	120,18 km/h
		Lauf 3:	00:01.667	00:01.807	00:14.020	157,26 km/h	00:47.693	01:05.187	121,50 km/h

## Sektorzeiten & Speeds - Gruppe N, H/N (OSK), F (DMSB), CTC/CGT (DMSB Div. 6.1 + 9)

Rg.	Nr.		Sektor 1 (15m)	Sektor 2 (15-50m)	Sektor 3	Speed Trap	Sektor 4	Laufzeit	Speed (Lauf)
2	126	<b>WIDMER Michael</b>		Mitsubishi Lancer EVO X RSC					
		Lauf 1:	00:01.567	00:01.667	00:13.671	0,00 km/h	00:52.996	01:09.901	113,30 km/h
		Lauf 2:	00:01.740	00:01.725	00:13.751	144,57 km/h	00:51.678	01:08.894	114,96 km/h
		Lauf 3:	00:01.587	00:01.658	00:13.301	157,05 km/h	00:48.801	01:05.347	121,20 km/h
3	116	<b>ALLKOFER Christian</b>		Fiat Punto RTN					
		Lauf 1:	00:01.903	00:01.986	00:14.636	0,00 km/h	00:50.713	01:09.238	114,39 km/h
		Lauf 2:	00:01.892	00:01.959	00:14.388	153,92 km/h	00:48.563	01:06.802	118,56 km/h
		Lauf 3:	00:01.846	00:01.895	00:14.376	154,23 km/h	00:47.406	01:05.523	120,87 km/h
4	112	<b>NEU Kai</b>		Ford Escort RS 2000					
		Lauf 1:	00:01.840	00:01.872	00:14.890	0,00 km/h	00:51.756	01:10.358	112,57 km/h
		Lauf 2:	00:01.769	00:01.912	00:14.695	152,02 km/h	00:49.600	01:07.976	116,51 km/h
		Lauf 3:	00:01.781	00:01.962	00:14.757	150,07 km/h	00:49.578	01:08.078	116,34 km/h
5	124	<b>BESTLE Guido</b>		Renault Alpine V6 GT Turbo D 5l					
		Lauf 1:	00:01.762	00:01.990	00:15.288	0,00 km/h	00:51.639	01:10.679	112,06 km/h
		Lauf 2:	00:01.653	00:01.956	00:15.031	153,23 km/h	00:50.131	01:08.771	115,16 km/h
		Lauf 3:	00:01.592	00:01.970	00:15.162	152,81 km/h	00:49.647	01:08.371	115,84 km/h
6	120	<b>GASSLER Bernhard</b>		Honda Civic Type R					
		Lauf 1:	00:01.883	00:01.995	00:15.213	0,00 km/h	00:54.080	01:13.171	108,24 km/h
		Lauf 2:	00:01.794	00:01.936	00:14.489	154,49 km/h	00:51.355	01:09.574	113,84 km/h
		Lauf 3:	00:01.748	00:01.932	00:14.506	154,77 km/h	00:50.523	01:08.709	115,27 km/h
7	118	<b>SCHMITZ Herbert</b>		Opel Astra GSI					
		Lauf 1:	00:01.821	00:02.104	00:15.280	0,00 km/h	00:53.218	01:12.423	109,36 km/h
		Lauf 2:	00:01.860	00:02.037	00:14.841	147,51 km/h	00:51.352	01:10.090	113,00 km/h
		Lauf 3:	00:02.516	00:02.096	00:14.836	147,96 km/h	00:49.758	01:09.206	114,44 km/h
8	125	<b>UENZEN Hendrik</b>		BMW E 36 325i					
		Lauf 1:	00:02.030	00:02.219	00:16.306	0,00 km/h	00:54.813	01:15.368	105,08 km/h
		Lauf 2:	00:01.928	00:02.036	00:15.483	139,80 km/h	00:51.515	01:10.962	111,61 km/h
		Lauf 3:	00:01.898	00:02.111	00:15.662	140,74 km/h	00:50.837	01:10.508	112,33 km/h
9	113	<b>LINNEMEYER Thomas</b>		VW Golf II GTI 16V					
		Lauf 1:	00:01.919	00:02.059	00:16.035	0,00 km/h	00:52.739	01:12.752	108,86 km/h
		Lauf 2:	00:01.777	00:02.059	00:15.768	135,00 km/h	00:51.260	01:10.864	111,76 km/h
		Lauf 3:	00:01.847	00:02.047	00:15.647	133,24 km/h	00:51.374	01:10.915	111,68 km/h
10	111	<b>RIED Matthias</b>		Opel Manta B					
		Lauf 1:	00:01.960	00:02.118	00:16.389	0,00 km/h	00:54.802	01:15.269	105,22 km/h
		Lauf 2:	00:01.784	00:02.107	00:16.125	133,38 km/h	00:51.174	01:11.190	111,25 km/h
		Lauf 3:	00:01.819	00:02.110	00:16.245	133,98 km/h	00:51.680	01:11.854	110,22 km/h
11	114	<b>LIMMER Armin</b>		Fiat Tipo 16V					
		Lauf 1:	00:02.055	00:02.123	00:17.097	0,00 km/h	00:59.074	01:20.349	98,57 km/h
		Lauf 2:	00:01.967	00:02.043	00:16.088	141,29 km/h	00:54.292	01:14.390	106,47 km/h
		Lauf 3:	00:01.872	00:02.022	00:15.554	142,91 km/h	00:52.958	01:12.406	109,38 km/h
12	117	<b>HEB Mario</b>		Opel Kadett GSI					
		Lauf 1:	00:01.922	00:02.108	00:16.101	0,00 km/h	00:56.104	01:16.235	103,89 km/h
		Lauf 2:	00:01.821	00:02.149	00:15.978	134,74 km/h	00:53.506	01:13.454	107,82 km/h
		Lauf 3:	00:01.768	00:02.041	00:16.176	137,32 km/h	00:52.715	01:12.700	108,94 km/h
13	109	<b>GÜRTZGEN Friedhelm</b>		BWM 2002 tii					
		Lauf 1:	00:01.994	00:02.228	00:17.061	0,00 km/h	00:57.479	01:18.762	100,56 km/h
		Lauf 2:	00:01.897	00:02.208	00:16.400	126,91 km/h	00:53.351	01:13.856	107,24 km/h
		Lauf 3:	00:01.873	00:02.210	00:16.340	127,54 km/h	00:52.416	01:12.839	108,73 km/h

## Sektorzeiten & Speeds - Gruppe N, H/N (OSK), F (DMSB), CTC/CGT (DMSB Div. 6.1 + 9)

Rg.	Nr.		Sektor 1 (15m)	Sektor 2 (15-50m)	Sektor 3	Speed Trap	Sektor 4	Laufzeit	Speed (Lauf)
14	108	<b>JAKOBI Stephanie</b>		Honda Civic EG 4					
		Lauf 1:	00:01.911	00:02.231	00:16.686	0,00 km/h	01:03.925	01:24.753	93,45 km/h
		Lauf 2:	00:01.809	00:02.272	00:16.516	131,85 km/h	00:57.164	01:17.761	101,85 km/h
		Lauf 3:	00:01.750	00:02.115	00:16.101	134,79 km/h	00:53.724	01:13.690	107,48 km/h
15	107	<b>FENDL Michael</b>		Honda Civic EE 9					
		Lauf 1:	00:01.867	00:02.106	00:16.499	0,00 km/h	01:00.902	01:21.374	97,33 km/h
		Lauf 2:	00:01.796	00:02.065	00:16.081	140,36 km/h	00:56.352	01:16.294	103,81 km/h
		Lauf 3:	00:01.822	00:02.108	00:15.730	142,15 km/h	00:54.679	01:14.339	106,54 km/h
16	122	<b>GIEBEL Michael</b>		BMW E30 325i					
		Lauf 1:	00:01.863	00:02.229	00:17.062	0,00 km/h	00:57.289	01:18.443	100,96 km/h
		Lauf 2:	00:01.793	00:02.201	00:16.801	131,77 km/h	00:54.456	01:15.251	105,25 km/h
		Lauf 3:	00:01.785	00:02.194	00:16.502	133,36 km/h	00:54.133	01:14.614	106,15 km/h
17	105	<b>ALTMANN Dieter jun.</b>		Peugeot 205 Rally 1,3					
		Lauf 1:	00:01.972	00:02.329	00:16.881	0,00 km/h	01:09.451	01:30.633	87,38 km/h
		Lauf 2:	00:01.807	00:02.150	00:16.533	127,20 km/h	00:54.899	01:15.389	105,05 km/h
		Lauf 3:	00:01.809	00:02.135	00:16.721	127,34 km/h	00:54.535	01:15.200	105,32 km/h
18	123	<b>TÖGEL Roland</b>		BMW M3 E30					
		Lauf 1:	00:01.923	00:02.195	00:17.626	0,00 km/h	00:59.423	01:21.167	97,58 km/h
		Lauf 2:	00:01.855	00:02.207	00:17.231	127,78 km/h	00:56.861	01:18.154	101,34 km/h
		Lauf 3:	00:02.021	00:02.193	00:16.270	139,16 km/h	00:56.087	01:16.571	103,43 km/h
19	121	<b>SCHMELZ Joachim</b>		Renault Alpine A310 V6					
		Lauf 1:	00:01.942	00:02.314	00:17.443	0,00 km/h	00:59.759	01:21.458	97,23 km/h
		Lauf 2:	00:01.907	00:02.253	00:16.744	130,47 km/h	00:56.443	01:17.347	102,40 km/h
		Lauf 3:	00:01.829	00:02.267	00:16.495	132,31 km/h	00:55.994	01:16.585	103,41 km/h
20	110	<b>RIEBESEHL Klaus</b>		Opel Kadett GSi					
		Lauf 1:	00:01.917	00:02.261	00:17.418	0,00 km/h	01:00.492	01:22.088	96,48 km/h
		Lauf 2:	00:01.863	00:02.055	00:16.310	127,91 km/h	00:58.032	01:18.260	101,20 km/h
		Lauf 3:	00:01.817	00:02.111	00:16.632	124,07 km/h	00:58.156	01:18.716	100,61 km/h