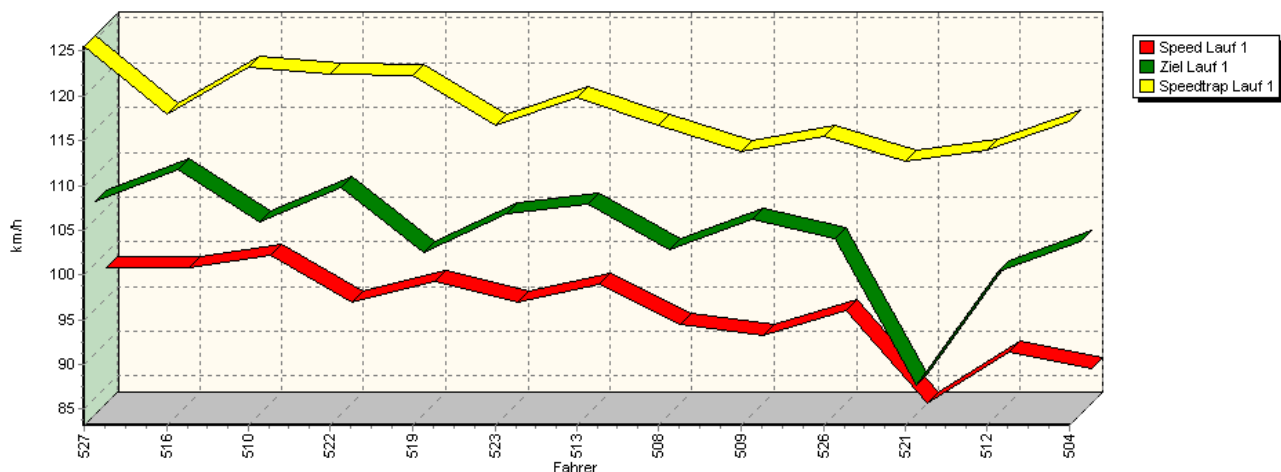
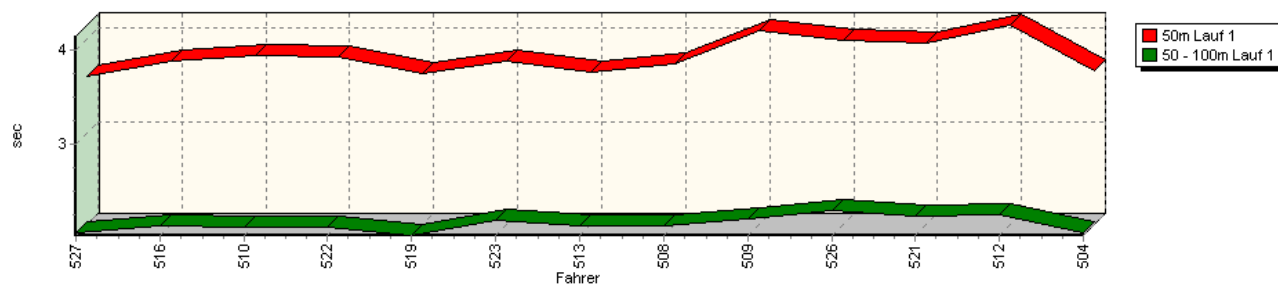


Sektorzeiten & Speeds - Training - Classic-Berg-Pokal NSU-Bergpokal - Klasse 9

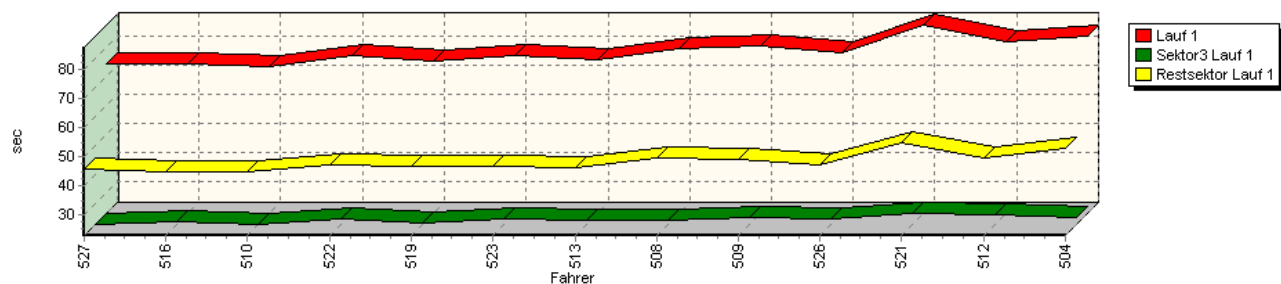
Speed-Diagramm Lauf 1



Sektor-Diagramm (Start) Lauf 1

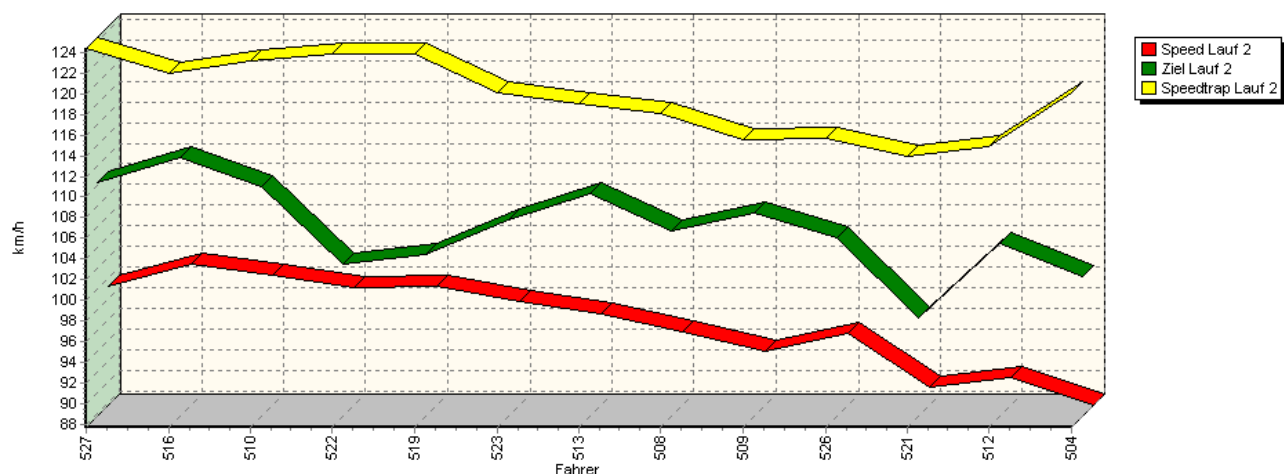


Sektor-Diagramm (Rest) Lauf 1

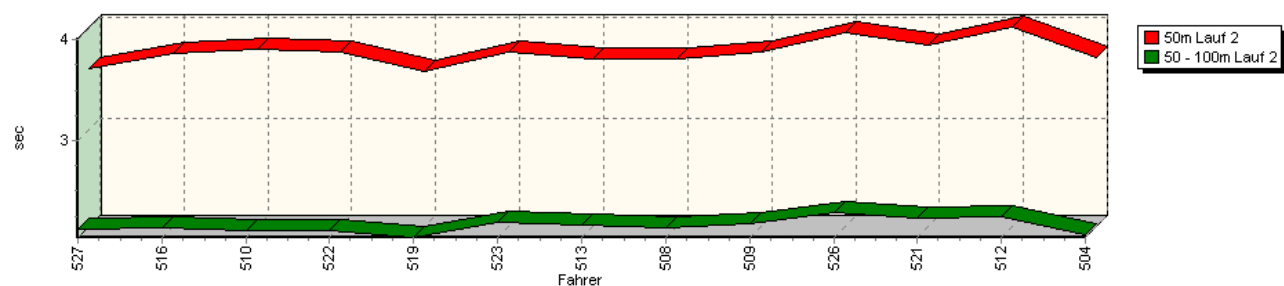


Sektorzeiten & Speeds - Training - Classic-Berg-Pokal NSU-Bergpokal - Klasse 9

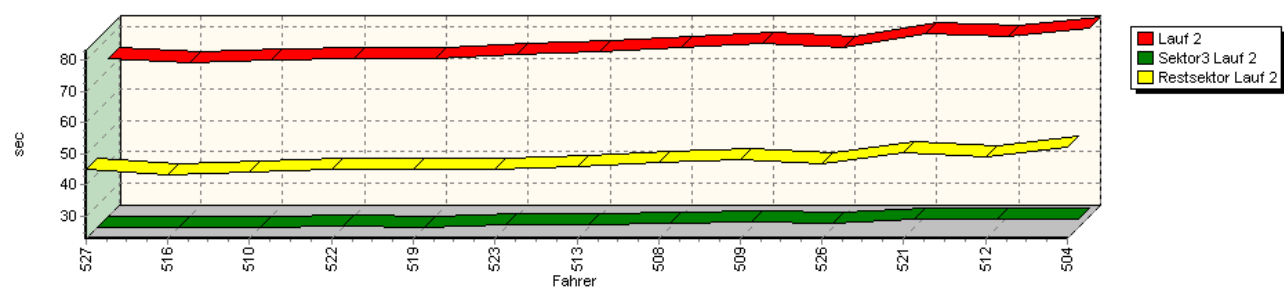
Speed-Diagramm Lauf 2



Sektor-Diagramm (Start) Lauf 2

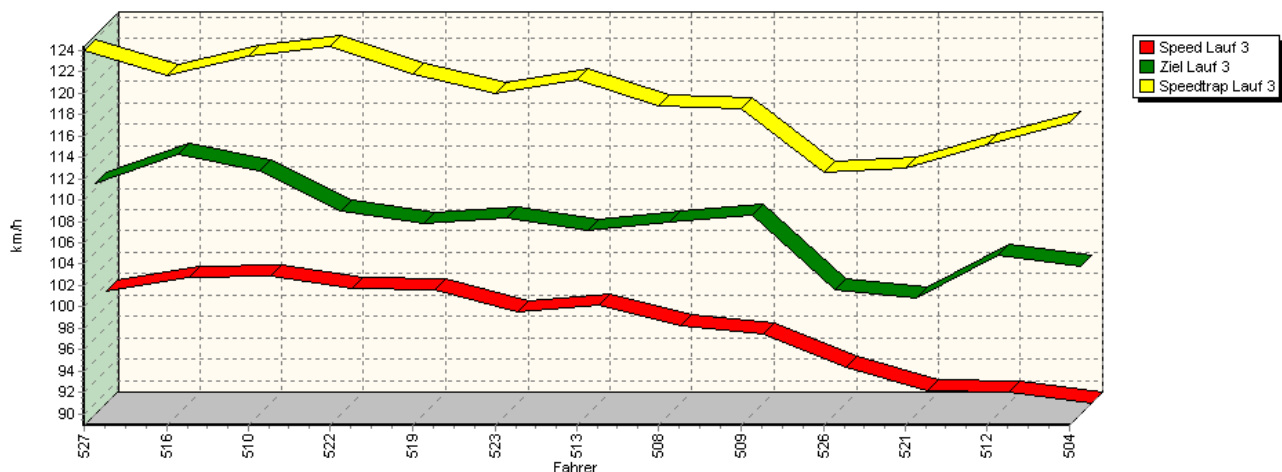


Sektor-Diagramm (Rest) Lauf 2

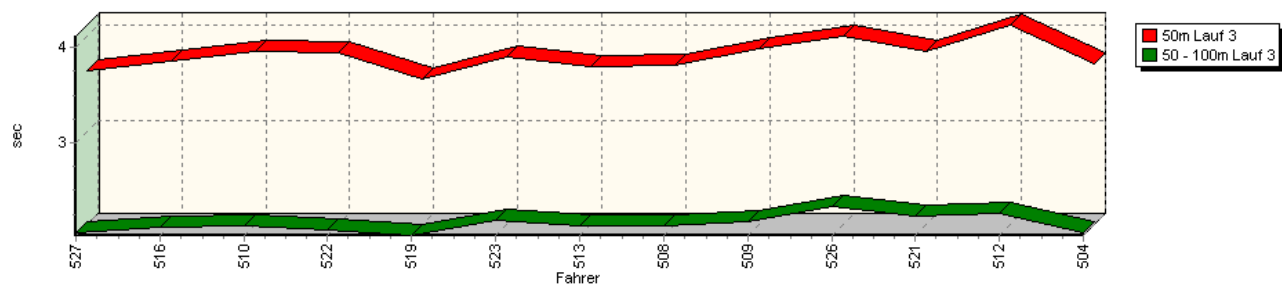


Sektorzeiten & Speeds - Training - Classic-Berg-Pokal NSU-Bergpokal - Klasse 9

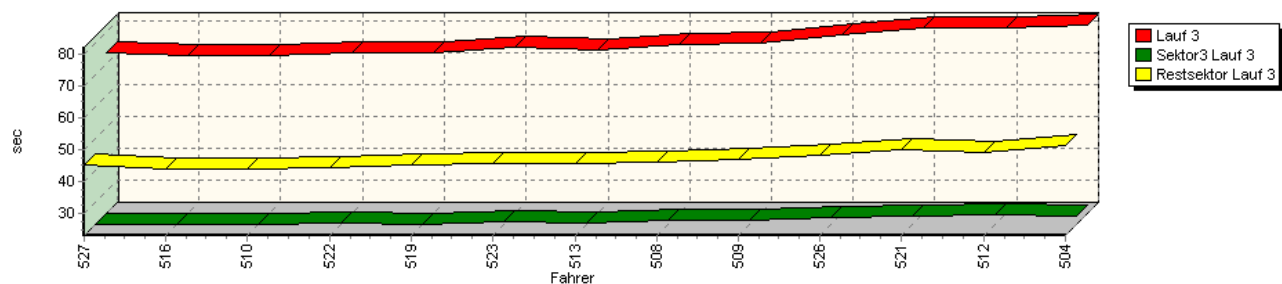
Speed-Diagramm Lauf 3



Sektor-Diagramm (Start) Lauf 3

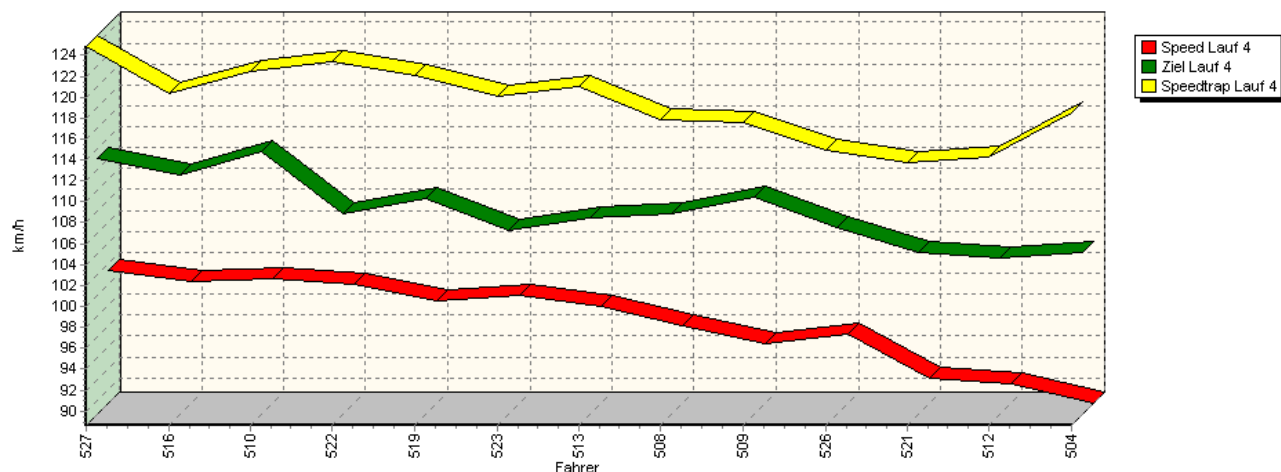


Sektor-Diagramm (Rest) Lauf 3

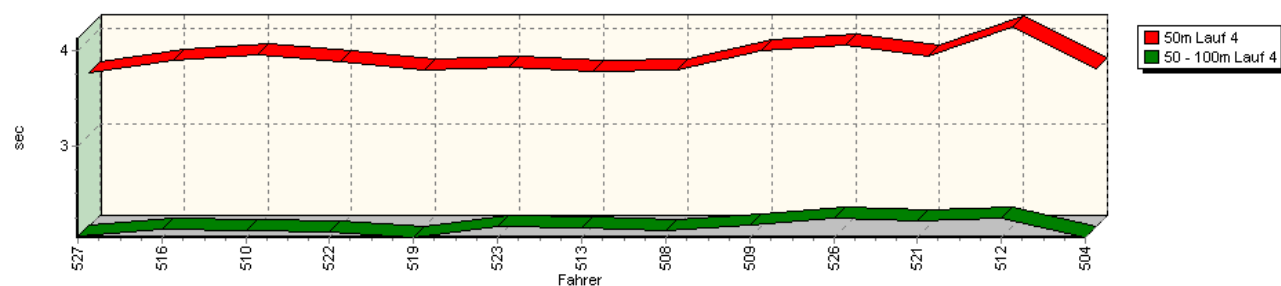


Sektorzeiten & Speeds - Training - Classic-Berg-Pokal NSU-Bergpokal - Klasse 9

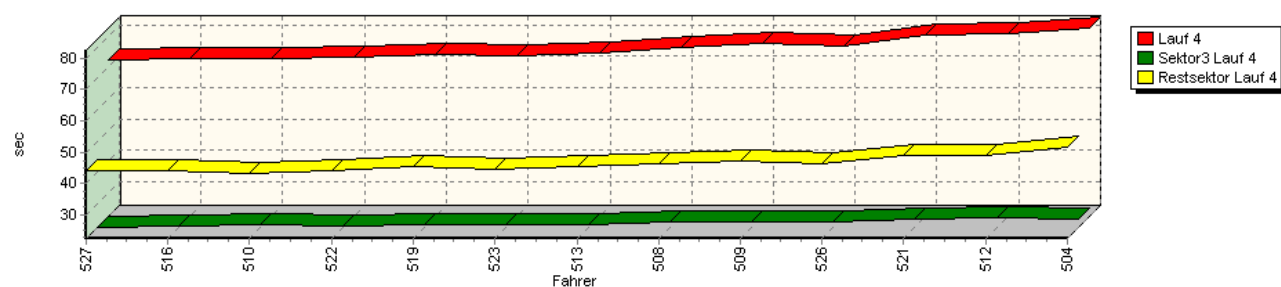
Speed-Diagramm Lauf 4



Sektor-Diagramm (Start) Lauf 4



Sektor-Diagramm (Rest) Lauf 4



Rg.	Nr.	Sektor 1 (50m)	Sektor 2 (50-100m)	Sektor 3	Speed Trap	Sektor 4	Speed (Ziel)	Laufzeit	Speed (Lauf)	
1	527	KUHNERT Andreas		NSU KWR						
		Lauf 1:	00:03.611	00:02.062	00:22.801	125,52 km/h	00:45.837	107,00 km/h	01:14.311	98,34 km/h
		Lauf 2:	00:03.594	00:02.111	00:22.879	124,37 km/h	00:45.033	110,31 km/h	01:13.617	99,27 km/h
		Lauf 3:	00:03.636	00:02.064	00:22.910	124,02 km/h	00:44.909	110,46 km/h	01:13.519	99,40 km/h
		Lauf 4:	00:03.654	00:02.071	00:22.443	124,85 km/h	00:43.959	113,14 km/h	01:12.127	101,32 km/h



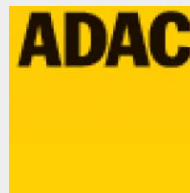
43. Osnabrücker ADAC Bergrennen

21. und 22. August 2010

Deutsche Bergmeisterschaft 2010

DMSB Bergpokal für Tourenwagen und Rennsportfahrzeuge

DMSB Classic-Berg-Pokal - KW Gruppe H Berg-Cup



Sektorzeiten & Speeds - Training - Classic-Berg-Pokal NSU-Bergpokal - Klasse 9

Rg.	Nr.		Sektor 1 (50m)	Sektor 2 (50-100m)	Sektor 3	Speed Trap	Sektor 4	Speed (Ziel)	Laufzeit	Speed (Lauf)
2	516	HÖBER Jörg		NSU TT Einfalt RS						
		Lauf 1:	00:03.776	00:02.138	00:23.570	117,98 km/h	00:44.837	110,56 km/h	01:14.321	98,33 km/h
		Lauf 2:	00:03.750	00:02.125	00:22.876	122,01 km/h	00:43.381	112,69 km/h	01:12.132	101,31 km/h
		Lauf 3:	00:03.742	00:02.122	00:22.861	121,67 km/h	00:43.859	113,25 km/h	01:12.584	100,68 km/h
		Lauf 4:	00:03.782	00:02.147	00:23.081	120,41 km/h	00:43.924	111,53 km/h	01:12.934	100,20 km/h
3	510	HOFMANN Steffen		NSU TT						
		Lauf 1:	00:03.821	00:02.119	00:22.659	123,23 km/h	00:44.634	104,65 km/h	01:13.233	99,79 km/h
		Lauf 2:	00:03.795	00:02.099	00:22.857	123,10 km/h	00:44.091	109,97 km/h	01:12.842	100,33 km/h
		Lauf 3:	00:03.843	00:02.130	00:22.805	123,46 km/h	00:43.748	111,70 km/h	01:12.526	100,77 km/h
		Lauf 4:	00:03.834	00:02.130	00:23.479	122,43 km/h	00:43.253	113,73 km/h	01:12.696	100,53 km/h
4	522	KRYSTOFIAK Thomas		NSU 1200C						
		Lauf 1:	00:03.813	00:02.121	00:24.346	122,36 km/h	00:47.088	108,55 km/h	01:17.368	94,46 km/h
		Lauf 2:	00:03.768	00:02.098	00:23.041	123,81 km/h	00:44.821	102,45 km/h	01:13.728	99,12 km/h
		Lauf 3:	00:03.819	00:02.089	00:23.029	124,35 km/h	00:44.343	107,94 km/h	01:13.280	99,73 km/h
		Lauf 4:	00:03.768	00:02.112	00:23.092	123,36 km/h	00:44.142	107,78 km/h	01:13.114	99,95 km/h
5	519	DAVIDOVIC Jörg		NSU TT						
		Lauf 1:	00:03.639	00:02.033	00:23.320	122,28 km/h	00:46.481	101,35 km/h	01:15.473	96,83 km/h
		Lauf 2:	00:03.572	00:02.031	00:22.796	123,86 km/h	00:45.242	103,34 km/h	01:13.641	99,24 km/h
		Lauf 3:	00:03.544	00:02.034	00:22.847	121,77 km/h	00:44.973	106,74 km/h	01:13.398	99,57 km/h
		Lauf 4:	00:03.680	00:02.056	00:23.256	122,03 km/h	00:45.280	109,25 km/h	01:14.272	98,40 km/h
6	523	KLEINEBERG Frank		NSU 1200 TT						
		Lauf 1:	00:03.776	00:02.190	00:24.808	116,73 km/h	00:46.606	105,55 km/h	01:17.380	94,44 km/h
		Lauf 2:	00:03.772	00:02.182	00:23.508	120,13 km/h	00:45.236	106,66 km/h	01:14.698	97,83 km/h
		Lauf 3:	00:03.786	00:02.187	00:23.677	119,91 km/h	00:45.360	107,31 km/h	01:15.010	97,43 km/h
		Lauf 4:	00:03.706	00:02.175	00:23.420	120,04 km/h	00:44.525	106,22 km/h	01:13.826	98,99 km/h
7	513	FASSBENDER Walter		NSU Grewe						
		Lauf 1:	00:03.654	00:02.139	00:24.004	119,88 km/h	00:45.912	106,61 km/h	01:15.709	96,53 km/h
		Lauf 2:	00:03.699	00:02.149	00:23.684	118,98 km/h	00:46.106	109,23 km/h	01:15.638	96,62 km/h
		Lauf 3:	00:03.676	00:02.138	00:23.290	121,25 km/h	00:45.342	106,19 km/h	01:14.446	98,16 km/h
		Lauf 4:	00:03.668	00:02.151	00:23.476	121,07 km/h	00:45.380	107,37 km/h	01:14.675	97,86 km/h
8	508	HOFMANN Lukas		NSU TT						
		Lauf 1:	00:03.738	00:02.142	00:24.229	116,75 km/h	00:49.341	101,61 km/h	01:19.450	91,98 km/h
		Lauf 2:	00:03.699	00:02.126	00:23.909	118,05 km/h	00:47.278	105,59 km/h	01:17.012	94,89 km/h
		Lauf 3:	00:03.701	00:02.130	00:24.003	118,85 km/h	00:46.150	106,84 km/h	01:15.984	96,18 km/h
		Lauf 4:	00:03.682	00:02.134	00:24.043	117,83 km/h	00:46.282	107,79 km/h	01:16.141	95,98 km/h
9	509	MEURER Karlheinz		NSU TT						
		Lauf 1:	00:04.087	00:02.212	00:25.229	113,78 km/h	00:48.936	105,05 km/h	01:20.464	90,82 km/h
		Lauf 2:	00:03.763	00:02.165	00:24.674	115,56 km/h	00:48.018	107,36 km/h	01:18.620	92,95 km/h
		Lauf 3:	00:03.863	00:02.181	00:23.939	118,55 km/h	00:46.630	107,50 km/h	01:16.613	95,39 km/h
		Lauf 4:	00:03.883	00:02.185	00:24.396	117,54 km/h	00:47.009	109,35 km/h	01:17.473	94,33 km/h
10	526	SCHMIDT Detlef		NSU Bandsch						
		Lauf 1:	00:03.993	00:02.294	00:24.577	115,41 km/h	00:47.227	102,84 km/h	01:18.091	93,58 km/h
		Lauf 2:	00:03.953	00:02.276	00:24.196	115,62 km/h	00:46.760	104,96 km/h	01:17.185	94,68 km/h
		Lauf 3:	00:03.994	00:02.343	00:24.783	112,62 km/h	00:48.045	100,58 km/h	01:19.165	92,31 km/h
		Lauf 4:	00:03.937	00:02.256	00:24.271	114,94 km/h	00:46.262	106,43 km/h	01:16.726	95,25 km/h



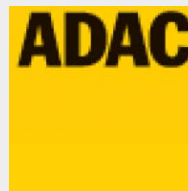
43. Osnabrücker ADAC Bergrennen

21. und 22. August 2010

Deutsche Bergmeisterschaft 2010

DMSB Bergpokal für Tourenwagen und Rennsportfahrzeuge

DMSB Classic-Berg-Pokal - KW Gruppe H Berg-Cup



Sektorzeiten & Speeds - Training - Classic-Berg-Pokal NSU-Bergpokal - Klasse 9

Rg.	Nr.		Sektor 1 (50m)	Sektor 2 (50-100m)	Sektor 3	Speed Trap	Sektor 4	Speed (Ziel)	Laufzeit	Speed (Lauf)
11	521	VOIGT Walter		NSU Spiess 1300 TT						
		Lauf 1:	00:03.956	00:02.233	00:26.726	112,75 km/h	00:54.902	86,50 km/h	01:27.817	83,22 km/h
		Lauf 2:	00:03.831	00:02.221	00:25.308	113,98 km/h	00:50.285	97,18 km/h	01:21.645	89,51 km/h
		Lauf 3:	00:03.840	00:02.231	00:25.312	113,00 km/h	00:49.750	99,81 km/h	01:21.133	90,07 km/h
		Lauf 4:	00:03.831	00:02.230	00:25.135	113,77 km/h	00:49.081	104,04 km/h	01:20.277	91,04 km/h
12	512	NEUNER Bernhard		NSU TT						
		Lauf 1:	00:04.152	00:02.250	00:26.076	114,00 km/h	00:49.710	99,05 km/h	01:22.188	88,92 km/h
		Lauf 2:	00:04.014	00:02.240	00:25.679	114,87 km/h	00:48.886	104,45 km/h	01:20.819	90,42 km/h
		Lauf 3:	00:04.114	00:02.259	00:25.747	115,16 km/h	00:49.094	103,84 km/h	01:21.214	89,98 km/h
		Lauf 4:	00:04.128	00:02.251	00:25.578	114,30 km/h	00:48.847	103,59 km/h	01:20.804	90,44 km/h
13	504	SZOTT Roman		NSU TT						
		Lauf 1:	00:03.660	00:02.063	00:25.192	117,26 km/h	00:53.057	102,52 km/h	01:23.972	87,03 km/h
		Lauf 2:	00:03.714	00:02.053	00:25.399	120,15 km/h	00:52.129	101,24 km/h	01:23.295	87,74 km/h
		Lauf 3:	00:03.707	00:02.065	00:25.257	117,23 km/h	00:51.142	102,79 km/h	01:22.171	88,94 km/h
		Lauf 4:	00:03.697	00:02.062	00:25.092	118,44 km/h	00:51.603	104,08 km/h	01:22.454	88,63 km/h