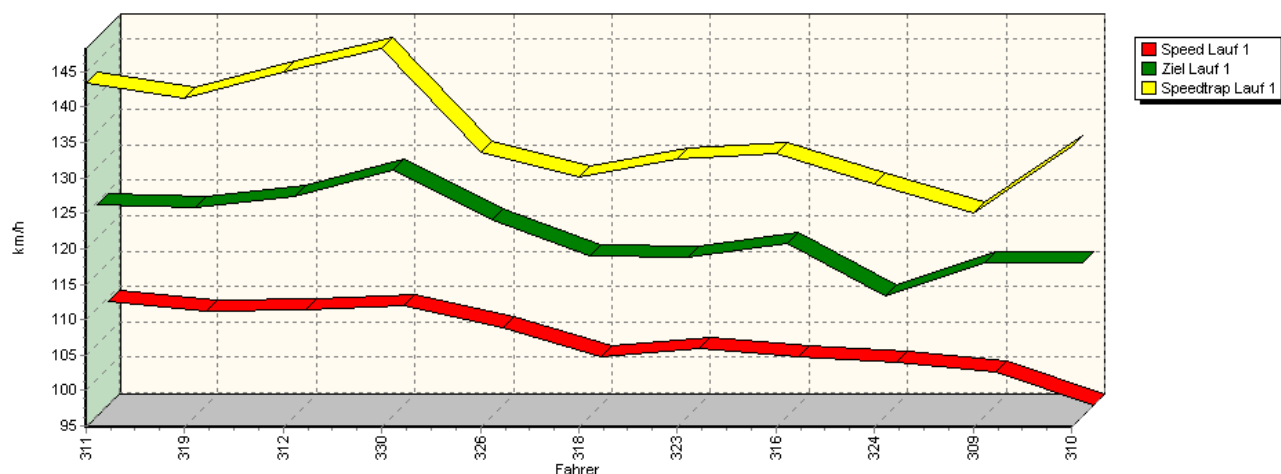
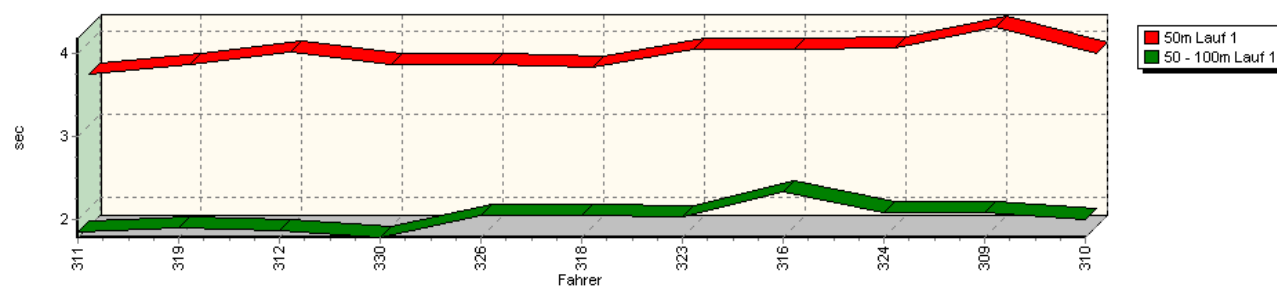


## Sektorzeiten & Speeds - Rennen - Gruppe H bis 1600 ccm - Klasse 40

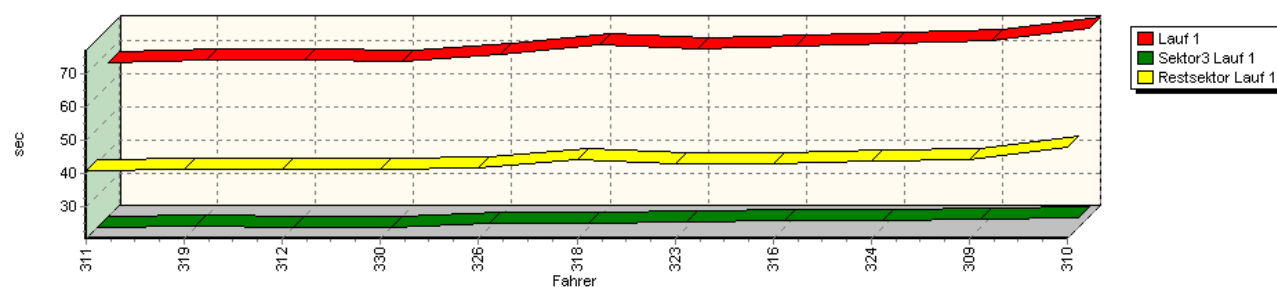
Speed-Diagramm Lauf 1



Sektor-Diagramm (Start) Lauf 1

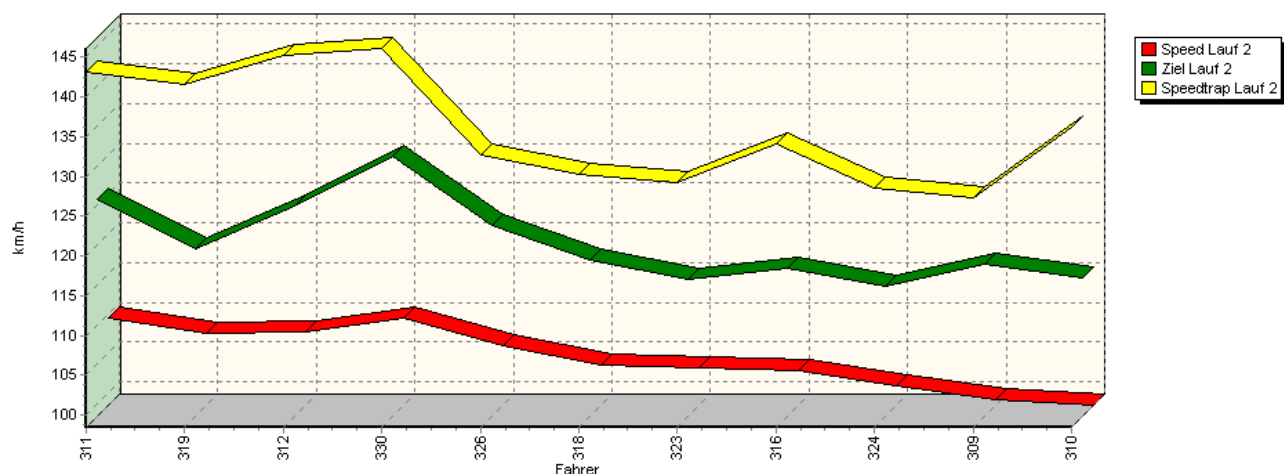


Sektor-Diagramm (Rest) Lauf 1

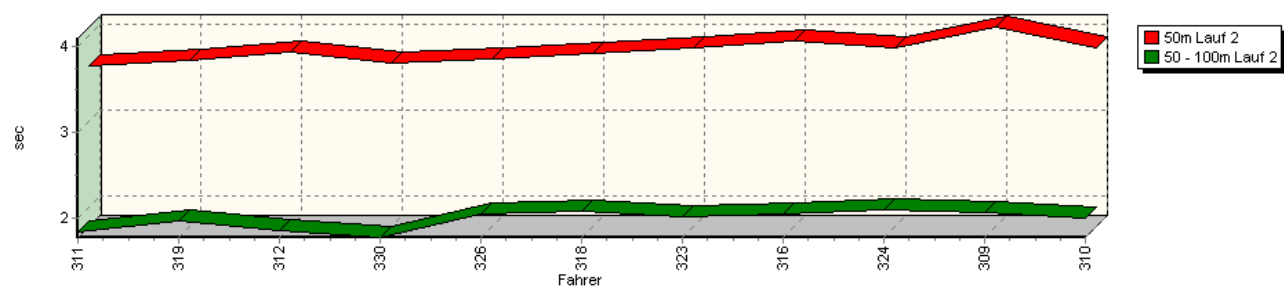


## Sektorzeiten & Speeds - Rennen - Gruppe H bis 1600 ccm - Klasse 40

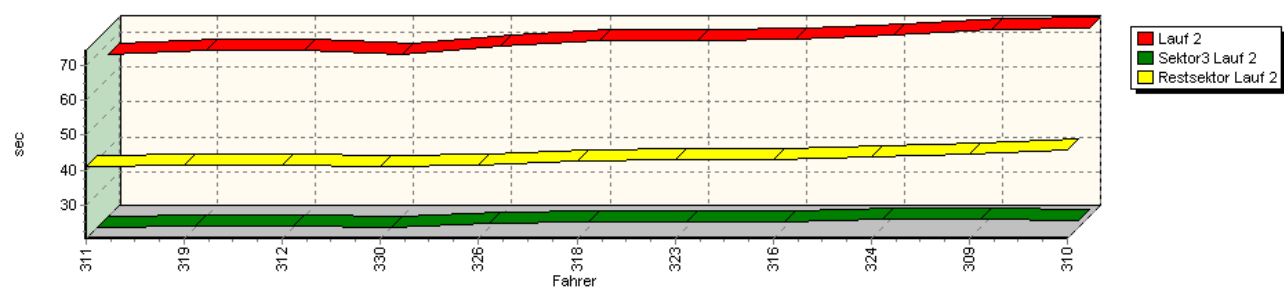
Speed-Diagramm Lauf 2



Sektor-Diagramm (Start) Lauf 2

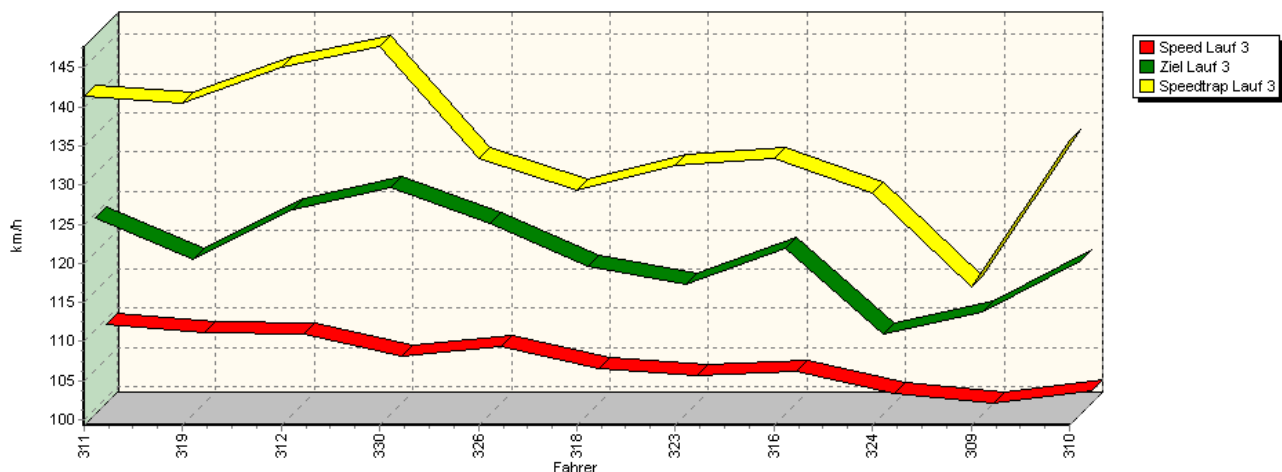


Sektor-Diagramm (Rest) Lauf 2

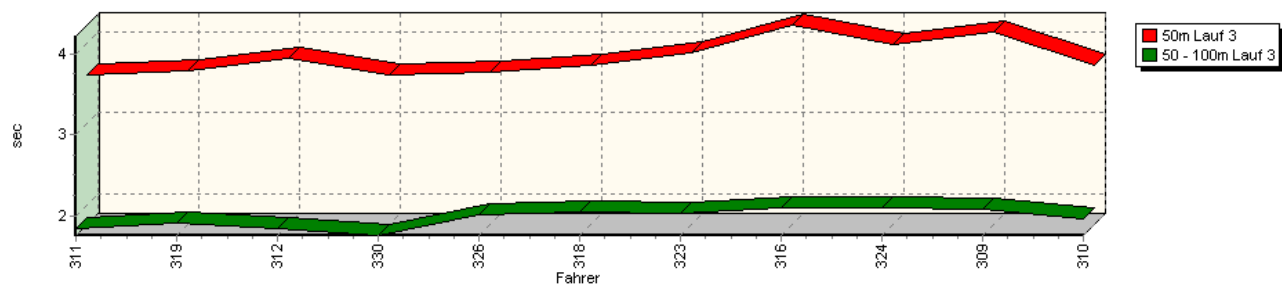


## Sektorzeiten & Speeds - Rennen - Gruppe H bis 1600 ccm - Klasse 40

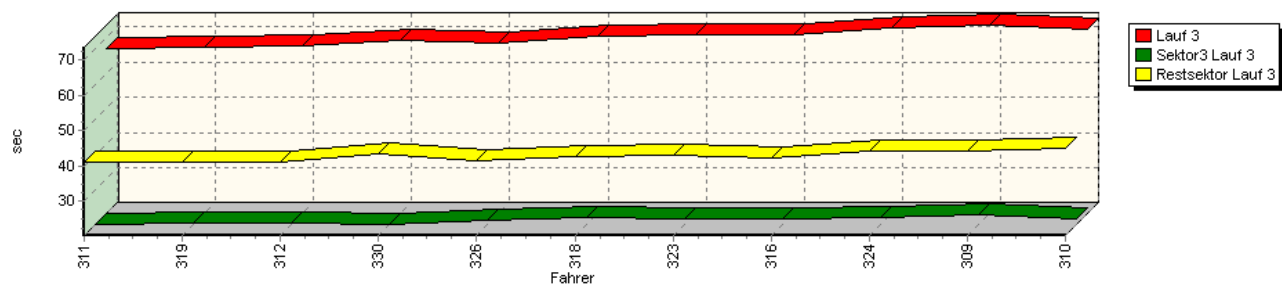
Speed-Diagramm Lauf 3



Sektor-Diagramm (Start) Lauf 3

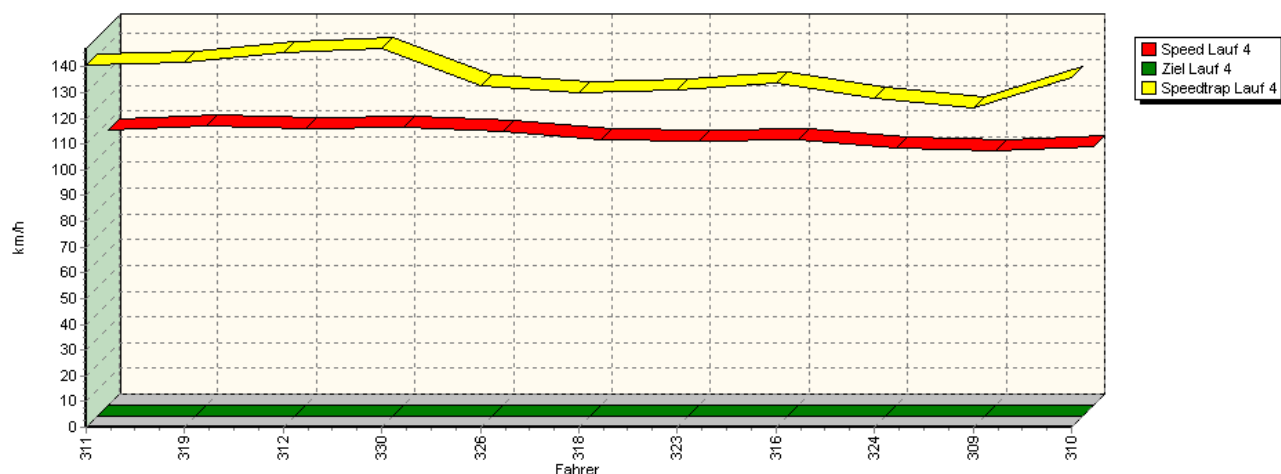


Sektor-Diagramm (Rest) Lauf 3

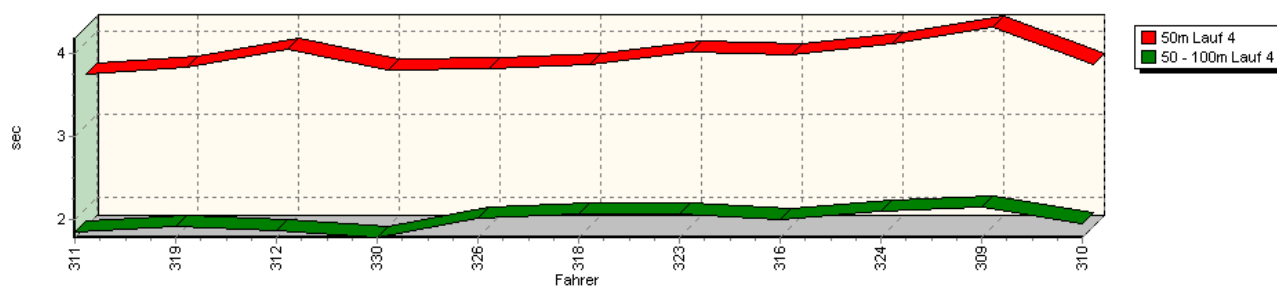


## Sektorzeiten & Speeds - Rennen - Gruppe H bis 1600 ccm - Klasse 40

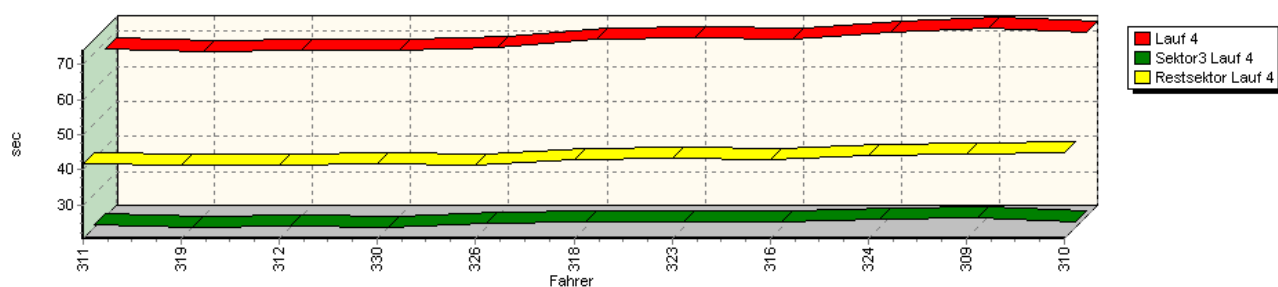
Speed-Diagramm Lauf 4



Sektor-Diagramm (Start) Lauf 4



Sektor-Diagramm (Rest) Lauf 4



Rg.	Nr.	Sektor 1 (50m)	Sektor 2 (50-100m)	Sektor 3	Speed Trap	Sektor 4	Speed (Ziel)	Laufzeit	Speed (Lauf)	
1	311	KLINGELBERGER Thomas		VW Polo Kit Car						
		Lauf 1:	00:03.617	00:01.845	00:20.455	143,38 km/h	00:40.854	124,57 km/h	01:06.771	109,45 km/h
		Lauf 2:	00:03.659	00:01.842	00:20.476	143,14 km/h	00:40.840	125,83 km/h	01:06.817	109,37 km/h
		Lauf 3:	00:03.595	00:01.841	00:20.336	141,39 km/h	00:41.087	124,35 km/h	01:06.859	109,31 km/h
		Lauf 4:	00:03.617	00:01.851	00:21.032	140,68 km/h	00:41.761	0,00 km/h	01:08.261	107,06 km/h



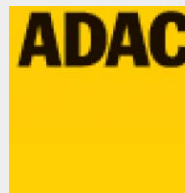
## 43. Osnabrücker ADAC Bergrennen

21. und 22. August 2010

Deutsche Bergmeisterschaft 2010

DMSB Bergpokal für Tourenwagen und Rennsportfahrzeuge

DMSB Classic-Berg-Pokal - KW Gruppe H Berg-Cup



### Sektorzeiten & Speeds - Rennen - Gruppe H bis 1600 ccm - Klasse 40

Rg.	Nr.		Sektor 1 (50m)	Sektor 2 (50-100m)	Sektor 3	Speed Trap	Sektor 4	Speed (Ziel)	Laufzeit	Speed (Lauf)
2	319	<b>AUCHTER Tobias</b>		Opel Corsa A GSI 16V						
		Lauf 1:	00:03.728	00:01.885	00:20.723	141,24 km/h	00:41.232	124,20 km/h	01:07.568	108,16 km/h
		Lauf 2:	00:03.714	00:01.971	00:20.883	141,67 km/h	00:41.381	119,48 km/h	01:07.949	107,55 km/h
		Lauf 3:	00:03.655	00:01.912	00:20.726	140,43 km/h	00:41.157	119,10 km/h	01:07.450	108,35 km/h
		Lauf 4:	00:03.703	00:01.922	00:20.439	142,01 km/h	00:41.206	0,00 km/h	01:07.270	108,64 km/h
3	312	<b>LEWE Manfred</b>		VW Brügge Golf 20V						
		Lauf 1:	00:03.884	00:01.854	00:20.442	144,96 km/h	00:41.295	125,89 km/h	01:07.475	108,31 km/h
		Lauf 2:	00:03.816	00:01.849	00:20.663	145,27 km/h	00:41.484	124,92 km/h	01:07.812	107,77 km/h
		Lauf 3:	00:03.806	00:01.851	00:20.633	145,06 km/h	00:41.257	125,40 km/h	01:07.547	108,19 km/h
		Lauf 4:	00:03.913	00:01.862	00:20.692	145,31 km/h	00:41.405	0,00 km/h	01:07.872	107,67 km/h
4	330	<b>MAIER Helmut</b>		VW Spiess Golf						
		Lauf 1:	00:03.729	00:01.776	00:20.490	148,27 km/h	00:41.081	129,49 km/h	01:07.076	108,95 km/h
		Lauf 2:	00:03.681	00:01.772	00:20.463	146,12 km/h	00:40.855	131,16 km/h	01:06.771	109,45 km/h
		Lauf 3:	00:03.606	00:01.763	00:20.381	147,73 km/h	00:43.611	128,25 km/h	01:09.361	105,36 km/h
		Lauf 4:	00:03.669	00:01.780	00:20.479	147,17 km/h	00:41.854	0,00 km/h	01:07.782	107,82 km/h
5	326	<b>FAULHABER Stefan</b>		Opel Risse Kadett C 8V						
		Lauf 1:	00:03.730	00:02.040	00:21.571	133,70 km/h	00:41.786	122,42 km/h	01:09.127	105,72 km/h
		Lauf 2:	00:03.725	00:02.048	00:21.690	132,78 km/h	00:41.563	122,49 km/h	01:09.026	105,87 km/h
		Lauf 3:	00:03.644	00:02.017	00:21.567	133,46 km/h	00:41.401	123,64 km/h	01:08.629	106,49 km/h
		Lauf 4:	00:03.693	00:02.021	00:21.515	132,89 km/h	00:41.354	0,00 km/h	01:08.583	106,56 km/h
6	318	<b>KLEINE-BÖRGER Andreas</b>		Honda CRX						
		Lauf 1:	00:03.707	00:02.039	00:21.823	130,13 km/h	00:44.344	117,44 km/h	01:11.913	101,62 km/h
		Lauf 2:	00:03.790	00:02.080	00:22.147	130,21 km/h	00:42.530	118,18 km/h	01:10.547	103,59 km/h
		Lauf 3:	00:03.727	00:02.047	00:22.170	129,27 km/h	00:42.553	118,25 km/h	01:10.497	103,66 km/h
		Lauf 4:	00:03.742	00:02.056	00:22.062	129,97 km/h	00:43.063	0,00 km/h	01:10.923	103,04 km/h
7	323	<b>DIETZ Nikolas</b>		VW Golf I 8V						
		Lauf 1:	00:03.916	00:02.024	00:21.974	132,68 km/h	00:43.103	117,26 km/h	01:11.017	102,90 km/h
		Lauf 2:	00:03.860	00:02.010	00:22.102	129,19 km/h	00:42.860	115,77 km/h	01:10.832	103,17 km/h
		Lauf 3:	00:03.872	00:02.041	00:21.957	132,45 km/h	00:43.185	115,85 km/h	01:11.055	102,85 km/h
		Lauf 4:	00:03.891	00:02.056	00:22.082	131,18 km/h	00:43.110	0,00 km/h	01:11.139	102,73 km/h
8	316	<b>NOWACZYK Mario</b>		VW Misczyk Golf I 8V						
		Lauf 1:	00:03.921	00:02.333	00:22.618	133,47 km/h	00:42.976	119,27 km/h	01:11.848	101,71 km/h
		Lauf 2:	00:03.942	00:02.043	00:22.098	134,07 km/h	00:43.023	117,13 km/h	01:11.106	102,78 km/h
		Lauf 3:	00:04.216	00:02.103	00:21.983	133,34 km/h	00:42.447	120,47 km/h	01:10.749	103,29 km/h
		Lauf 4:	00:03.860	00:02.001	00:21.940	133,59 km/h	00:42.908	0,00 km/h	01:10.709	103,35 km/h
9	324	<b>SEITZ Jürgen</b>		Ford Escort MKIII						
		Lauf 1:	00:03.942	00:02.084	00:22.462	129,10 km/h	00:43.931	111,71 km/h	01:12.419	100,91 km/h
		Lauf 2:	00:03.859	00:02.089	00:22.678	128,61 km/h	00:43.757	114,80 km/h	01:12.383	100,96 km/h
		Lauf 3:	00:03.985	00:02.096	00:22.469	129,03 km/h	00:44.218	109,52 km/h	01:12.768	100,43 km/h
		Lauf 4:	00:03.988	00:02.092	00:22.677	128,07 km/h	00:44.209	0,00 km/h	01:12.966	100,16 km/h
10	309	<b>SYMANTZICK Jörg</b>		VW Jetta						
		Lauf 1:	00:04.188	00:02.080	00:23.097	125,11 km/h	00:44.105	116,41 km/h	01:13.470	99,47 km/h
		Lauf 2:	00:04.105	00:02.064	00:22.916	127,37 km/h	00:44.551	117,58 km/h	01:13.636	99,25 km/h
		Lauf 3:	00:04.123	00:02.090	00:23.027	116,91 km/h	00:44.377	112,27 km/h	01:13.617	99,27 km/h
		Lauf 4:	00:04.188	00:02.154	00:23.156	124,27 km/h	00:44.535	0,00 km/h	01:14.033	98,71 km/h



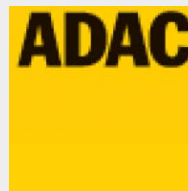
## 43. Osnabrücker ADAC Bergrennen

21. und 22. August 2010

Deutsche Bergmeisterschaft 2010

DMSB Bergpokal für Tourenwagen und Rennsportfahrzeuge

DMSB Classic-Berg-Pokal - KW Gruppe H Berg-Cup



### Sektorzeiten & Speeds - Rennen - Gruppe H bis 1600 ccm - Klasse 40

Rg.	Nr.		Sektor 1 (50m)	Sektor 2 (50-100m)	Sektor 3	Speed Trap	Sektor 4	Speed (Ziel)	Laufzeit	Speed (Lauf)
11	310	<b>SCHEELE Marcel</b>		Honda Civic						
		Lauf 1:	00:03.874	00:02.001	00:23.216	134,44 km/h	00:47.992	116,50 km/h	01:17.083	94,81 km/h
		Lauf 2:	00:03.865	00:02.000	00:22.512	136,29 km/h	00:45.840	115,91 km/h	01:14.217	98,47 km/h
		Lauf 3:	00:03.717	00:01.969	00:21.961	135,71 km/h	00:44.849	118,90 km/h	01:12.496	100,81 km/h
		Lauf 4:	00:03.740	00:01.955	00:22.178	136,07 km/h	00:44.987	0,00 km/h	01:12.860	100,30 km/h