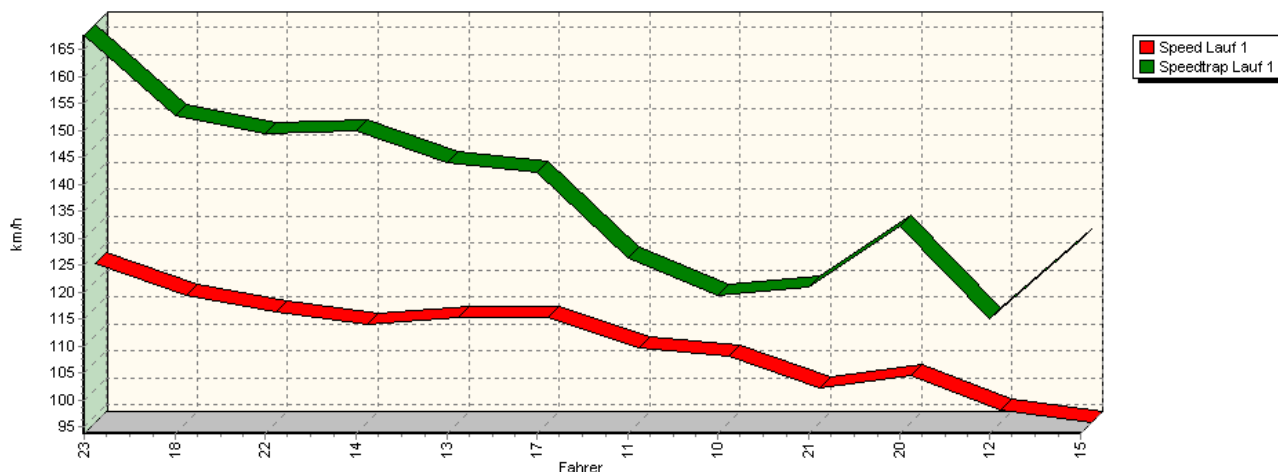
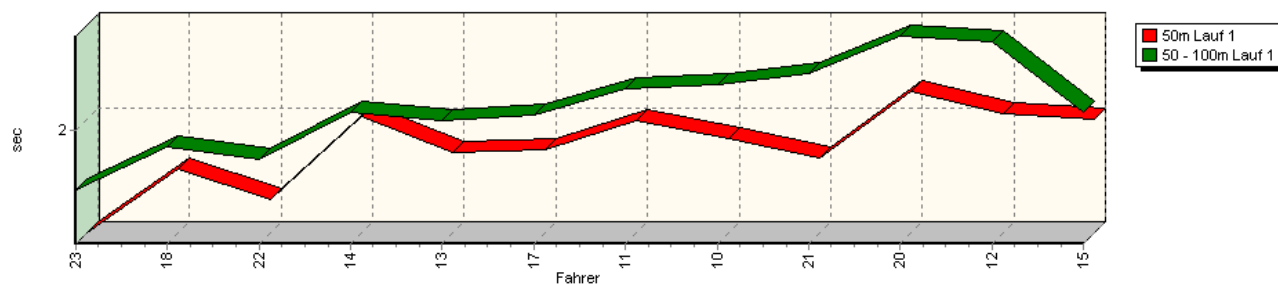


Sektorzeiten & Speeds - Gruppe N/DN, F2005, N-Diesel, (DMSB) (N=FIA)

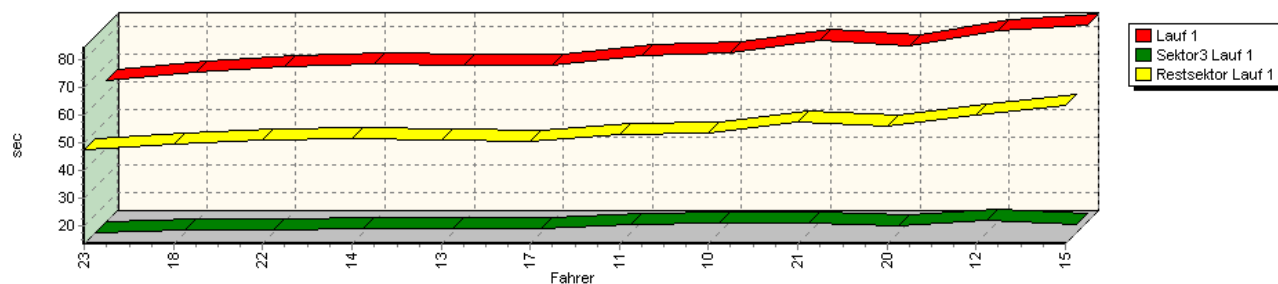
Speed-Diagramm Lauf 1



Sektor-Diagramm (Start) Lauf 1

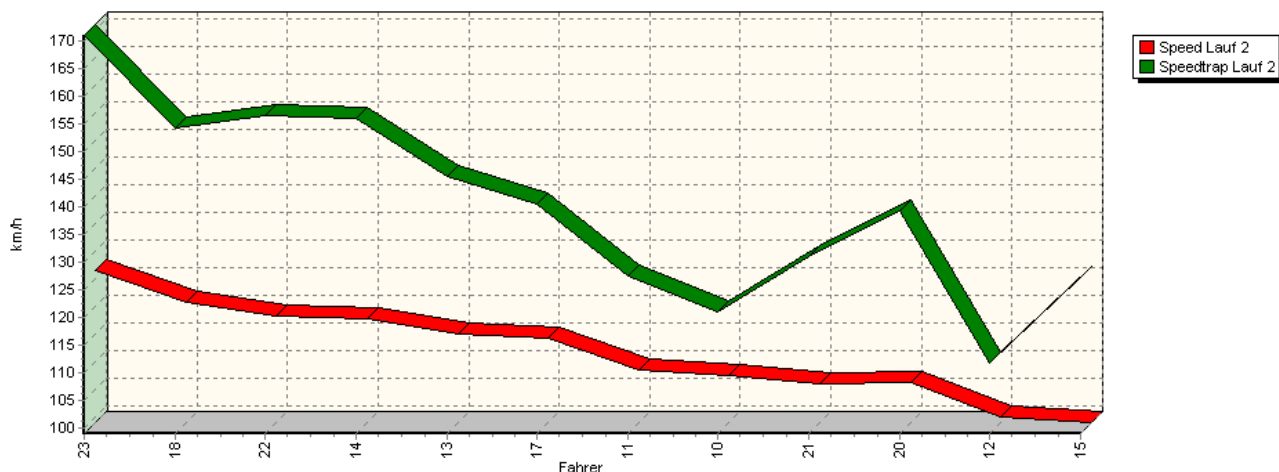


Sektor-Diagramm (Rest) Lauf 1



Sektorzeiten & Speeds - Gruppe N/DN, F2005, N-Diesel, (DMSB) (N=FIA)

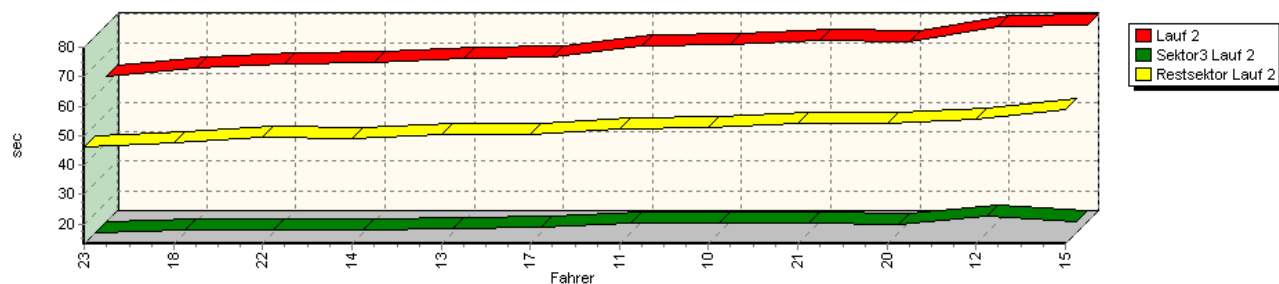
Speed-Diagramm Lauf 2



Sektor-Diagramm (Start) Lauf 2

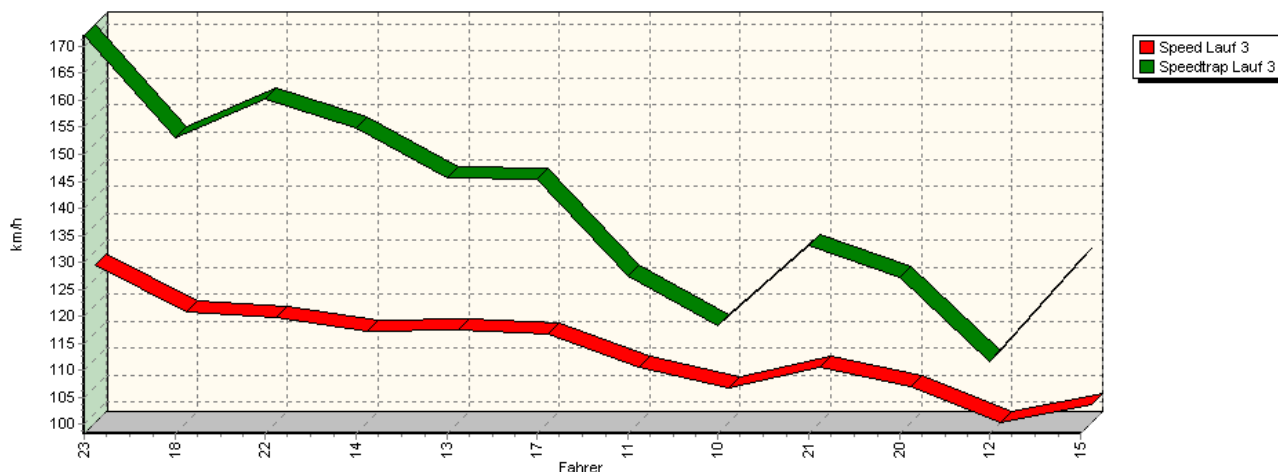


Sektor-Diagramm (Rest) Lauf 2

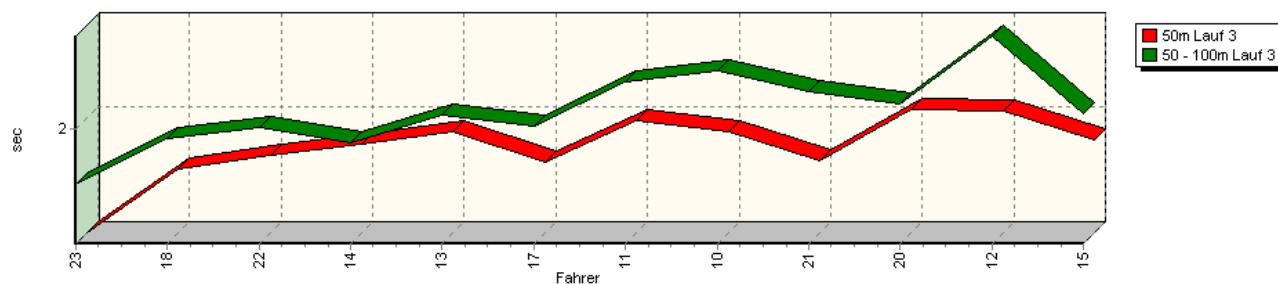


Sektorzeiten & Speeds - Gruppe N/DN, F2005, N-Diesel, (DMSB) (N=FIA)

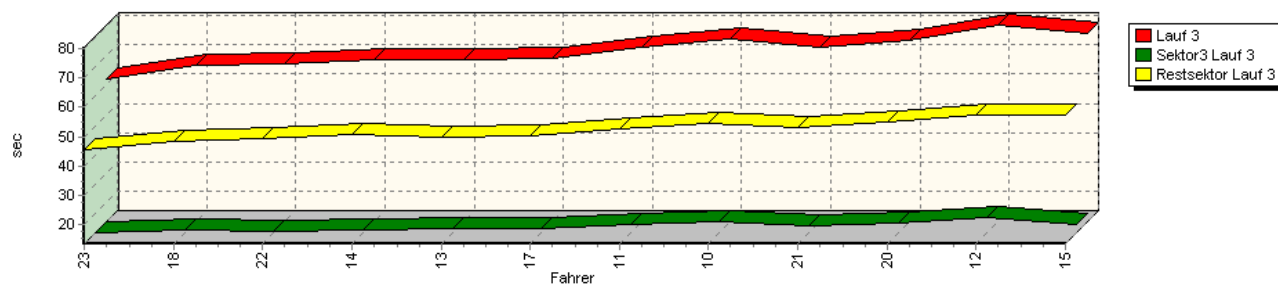
Speed-Diagramm Lauf 3



Sektor-Diagramm (Start) Lauf 3

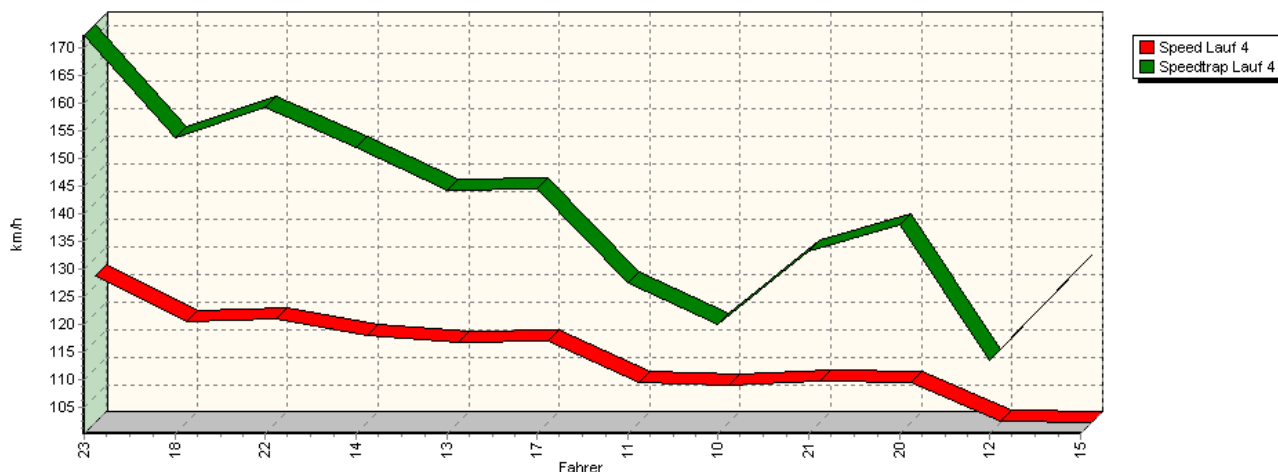


Sektor-Diagramm (Rest) Lauf 3

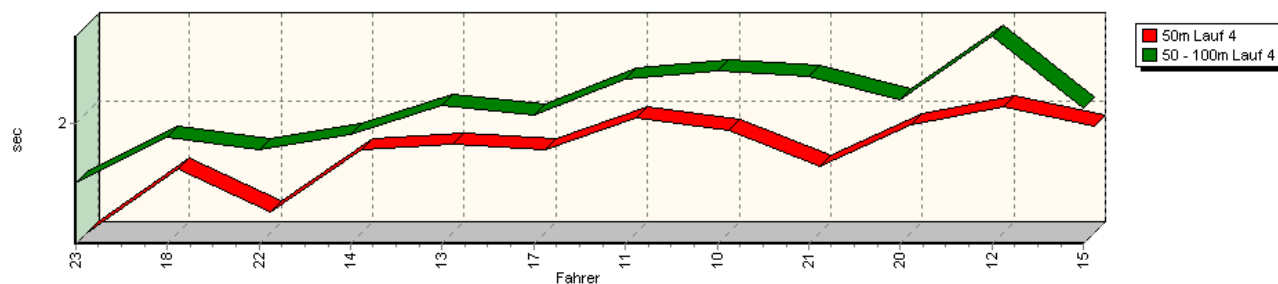


Sektorzeiten & Speeds - Gruppe N/DN, F2005, N-Diesel, (DMSB) (N=FIA)

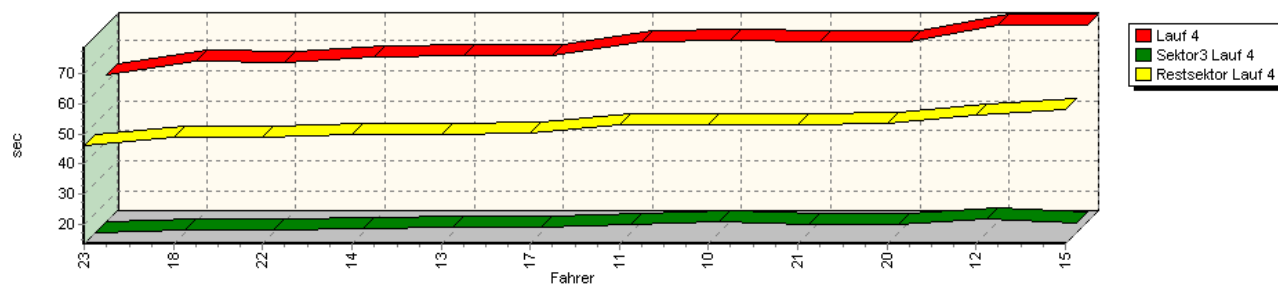
Speed-Diagramm Lauf 4



Sektor-Diagramm (Start) Lauf 4



Sektor-Diagramm (Rest) Lauf 4



Rg.	Nr.	Sektor 1 (15m)	Sektor 2 (15-50m)	Sektor 3	Speed Trap	Sektor 4	Laufzeit	Speed (Lauf)	
1	23	WANEK Roland		Mitsubishi Lancer EVO 9					
		Lauf 1:	00:01.423	00:01.697	00:13.637	167,57 km/h	00:47.502	01:04.259	123,25 km/h
		Lauf 2:	00:01.384	00:01.679	00:13.304	171,08 km/h	00:46.216	01:02.583	126,55 km/h
		Lauf 3:	00:01.360	00:01.687	00:13.354	171,99 km/h	00:45.714	01:02.115	127,51 km/h
		Lauf 4:	00:01.351	00:01.683	00:13.309	172,32 km/h	00:46.159	01:02.502	126,72 km/h

Sektorzeiten & Speeds - Gruppe N/DN, F2005, N-Diesel, (DMSB) (N=FIA)

Rg.	Nr.		Sektor 1 (15m)	Sektor 2 (15-50m)	Sektor 3	Speed Trap	Sektor 4	Laufzeit	Speed (Lauf)
2	18	STOLL Jochen	Peugeot 306 s16						
		Lauf 1:	00:01.749	00:01.917	00:14.487	152,75 km/h	00:49.317	01:07.470	117,39 km/h
		Lauf 2:	00:01.683	00:01.893	00:14.381	154,21 km/h	00:47.610	01:05.567	120,79 km/h
		Lauf 3:	00:01.716	00:01.946	00:14.440	153,06 km/h	00:48.542	01:06.644	118,84 km/h
		Lauf 4:	00:01.695	00:01.930	00:14.405	153,75 km/h	00:48.720	01:06.750	118,65 km/h
3	22	CRETEGNY Jean-Romain	Ford Sierra						
		Lauf 1:	00:01.590	00:01.850	00:14.555	149,28 km/h	00:51.219	01:09.214	114,43 km/h
		Lauf 2:	00:01.599	00:01.932	00:14.188	156,55 km/h	00:49.290	01:07.009	118,19 km/h
		Lauf 3:	00:01.787	00:02.007	00:13.940	160,22 km/h	00:49.536	01:07.270	117,73 km/h
		Lauf 4:	00:01.462	00:01.856	00:14.088	159,21 km/h	00:49.067	01:06.473	119,15 km/h
4	14	BÄTZEL Waldemar	Peugeot 206 RC						
		Lauf 1:	00:02.013	00:02.090	00:15.219	149,88 km/h	00:51.364	01:10.686	112,04 km/h
		Lauf 2:	00:01.814	00:01.848	00:14.354	156,11 km/h	00:49.191	01:07.207	117,84 km/h
		Lauf 3:	00:01.851	00:01.920	00:14.432	154,87 km/h	00:50.606	01:08.809	115,10 km/h
		Lauf 4:	00:01.802	00:01.943	00:14.614	152,06 km/h	00:49.844	01:08.203	116,12 km/h
5	13	WEIMANN Jürgen	Renault Williams Clio						
		Lauf 1:	00:01.832	00:02.050	00:15.154	144,07 km/h	00:50.922	01:09.958	113,21 km/h
		Lauf 2:	00:01.833	00:02.035	00:14.677	145,57 km/h	00:50.381	01:08.926	114,91 km/h
		Lauf 3:	00:01.920	00:02.076	00:14.720	145,65 km/h	00:49.908	01:08.624	115,41 km/h
		Lauf 4:	00:01.832	00:02.099	00:14.929	144,33 km/h	00:50.063	01:08.923	114,91 km/h
6	17	SCHMITZ Herbert	Opel Astra GSi						
		Lauf 1:	00:01.844	00:02.077	00:15.369	142,28 km/h	00:50.682	01:09.972	113,19 km/h
		Lauf 2:	00:01.742	00:02.045	00:15.179	140,43 km/h	00:50.405	01:09.371	114,17 km/h
		Lauf 3:	00:01.751	00:02.014	00:14.934	145,29 km/h	00:50.290	01:08.989	114,80 km/h
		Lauf 4:	00:01.799	00:02.047	00:14.993	144,64 km/h	00:50.076	01:08.915	114,92 km/h
7	11	SCHEERSCHMIDT Mathias	Opel Corsa 1,4 l						
		Lauf 1:	00:01.990	00:02.211	00:16.461	126,41 km/h	00:52.950	01:13.612	107,59 km/h
		Lauf 2:	00:02.048	00:02.258	00:16.415	127,58 km/h	00:52.250	01:12.971	108,54 km/h
		Lauf 3:	00:01.983	00:02.263	00:16.281	127,42 km/h	00:52.445	01:12.972	108,53 km/h
		Lauf 4:	00:01.969	00:02.241	00:16.195	127,50 km/h	00:53.220	01:13.625	107,57 km/h
8	10	HEMMER Björn	Peugeot 106 Rallye						
		Lauf 1:	00:01.901	00:02.231	00:16.911	119,32 km/h	00:53.626	01:14.669	106,07 km/h
		Lauf 2:	00:01.928	00:02.257	00:16.828	121,02 km/h	00:52.666	01:13.679	107,49 km/h
		Lauf 3:	00:01.925	00:02.322	00:16.921	118,38 km/h	00:54.552	01:15.720	104,60 km/h
		Lauf 4:	00:01.904	00:02.288	00:16.899	120,01 km/h	00:52.888	01:13.979	107,06 km/h
9	21	SCHMELZ Joachim	Renault Alpine A310/V6						
		Lauf 1:	00:01.801	00:02.283	00:17.278	121,05 km/h	00:57.560	01:18.922	100,35 km/h
		Lauf 2:	00:01.813	00:02.249	00:16.424	131,01 km/h	00:54.265	01:14.751	105,95 km/h
		Lauf 3:	00:01.762	00:02.204	00:15.947	133,21 km/h	00:53.040	01:12.953	108,56 km/h
		Lauf 4:	00:01.708	00:02.259	00:16.293	133,31 km/h	00:53.242	01:13.502	107,75 km/h
10	20	TÖGEL Roland	BMW E30 M3						
		Lauf 1:	00:02.142	00:02.476	00:16.371	132,28 km/h	00:56.187	01:17.176	102,62 km/h
		Lauf 2:	00:01.949	00:02.185	00:16.252	139,31 km/h	00:54.141	01:14.527	106,27 km/h
		Lauf 3:	00:02.048	00:02.134	00:16.483	127,25 km/h	00:54.809	01:15.474	104,94 km/h
		Lauf 4:	00:01.931	00:02.131	00:16.110	138,08 km/h	00:53.398	01:13.570	107,65 km/h

Sektorzeiten & Speeds - Gruppe N/DN, F2005, N-Diesel, (DMSB) (N=FIA)

Rg.	Nr.		Sektor 1 (15m)	Sektor 2 (15-50m)	Sektor 3	Speed Trap	Sektor 4	Laufzeit	Speed (Lauf)
11	12	SCHERER Yannick		Opel Corsa B SI					
		Lauf 1:	00:02.025	00:02.449	00:18.082	115,06 km/h	00:59.740	01:22.296	96,24 km/h
		Lauf 2:	00:02.010	00:02.464	00:19.117	111,67 km/h	00:55.743	01:19.334	99,83 km/h
		Lauf 3:	00:02.040	00:02.514	00:18.507	111,62 km/h	00:57.489	01:20.550	98,32 km/h
		Lauf 4:	00:02.030	00:02.472	00:18.013	113,54 km/h	00:56.300	01:18.815	100,49 km/h
12	15	WESTENHÖFER Armin		VW Scirocco II 53B					
		Lauf 1:	00:02.001	00:02.088	00:16.769	129,76 km/h	01:03.546	01:24.404	93,83 km/h
		Lauf 2:	00:01.928	00:02.121	00:17.056	127,20 km/h	00:58.933	01:20.038	98,95 km/h
		Lauf 3:	00:01.876	00:02.081	00:16.400	130,67 km/h	00:57.529	01:17.886	101,69 km/h
		Lauf 4:	00:01.923	00:02.082	00:16.740	130,55 km/h	00:58.232	01:18.977	100,28 km/h