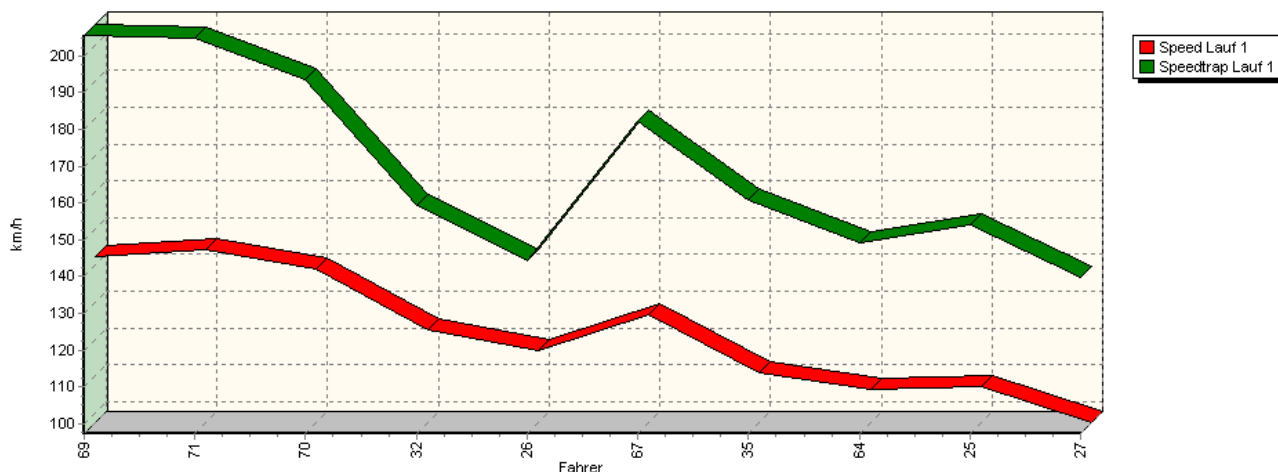
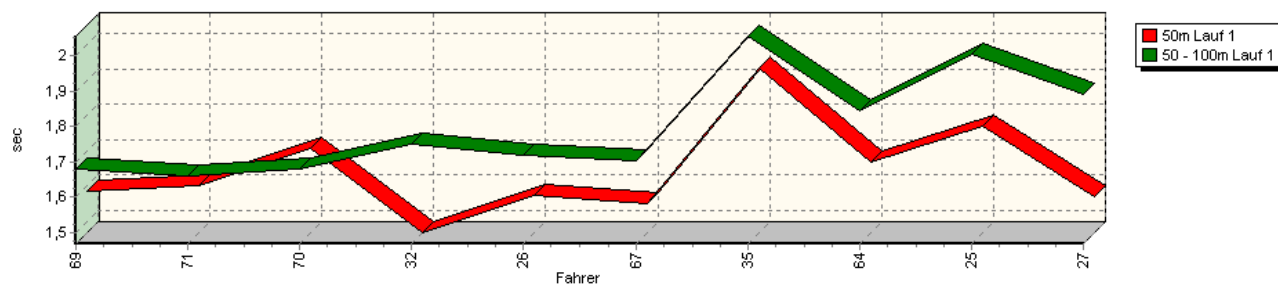


Sektorzeiten & Speeds - Gruppe E2 Zwei-Sitzer

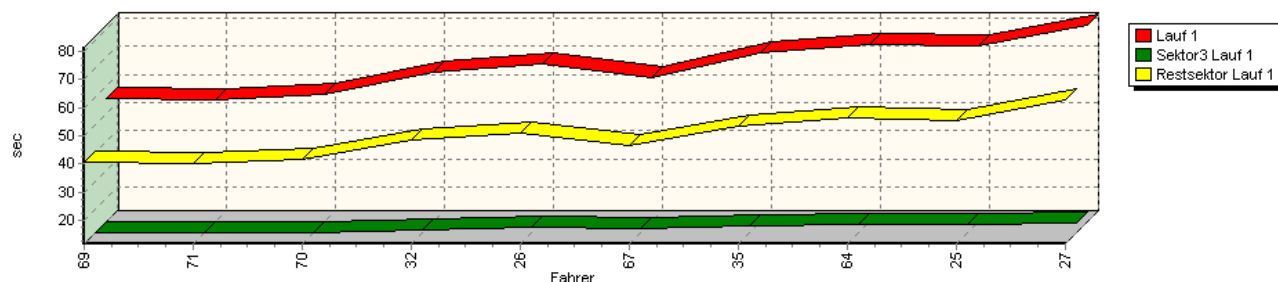
Speed-Diagramm Lauf 1



Sektor-Diagramm (Start) Lauf 1

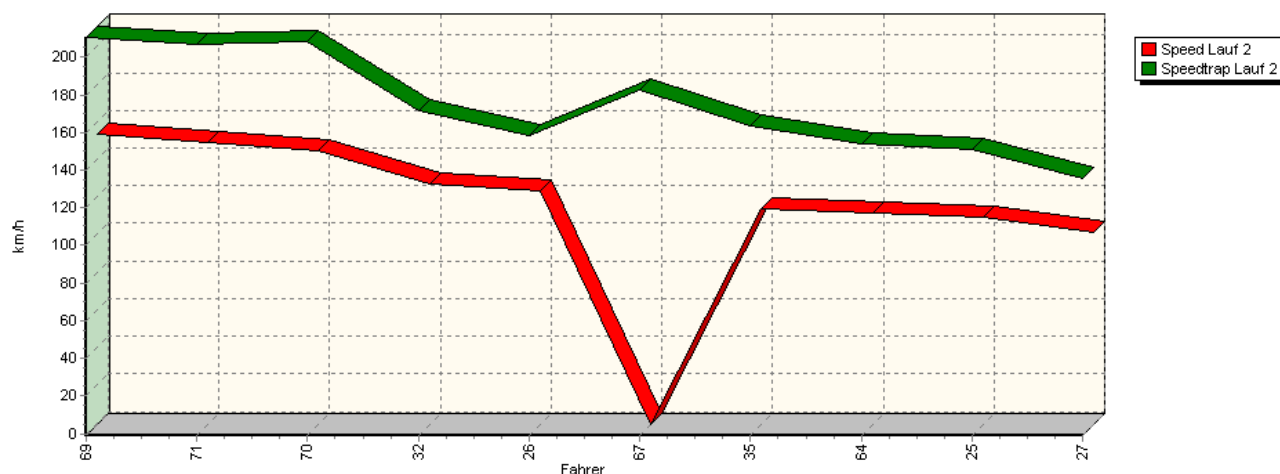


Sektor-Diagramm (Rest) Lauf 1

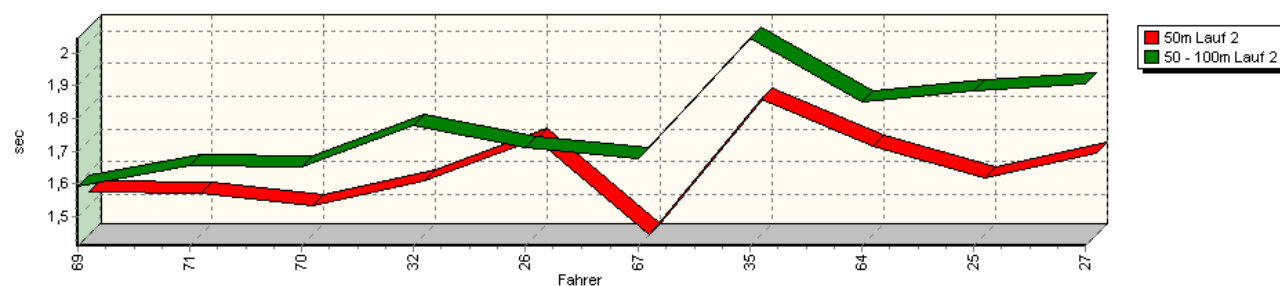


Sektorzeiten & Speeds - Gruppe E2 Zwei-Sitzer

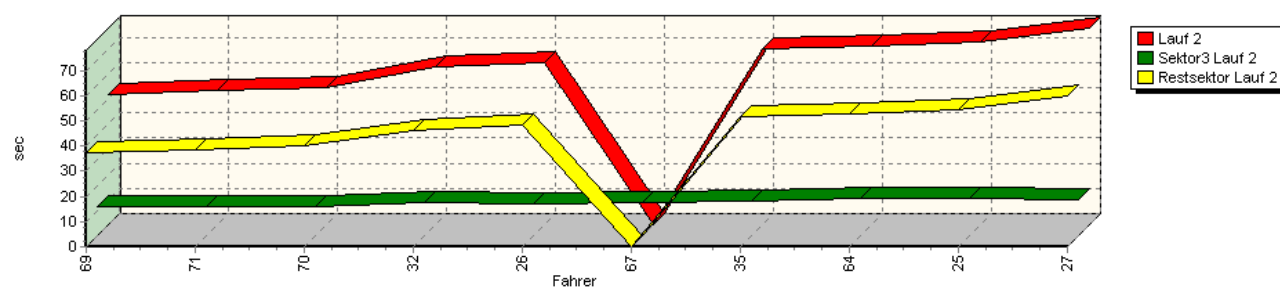
Speed-Diagramm Lauf 2



Sektor-Diagramm (Start) Lauf 2

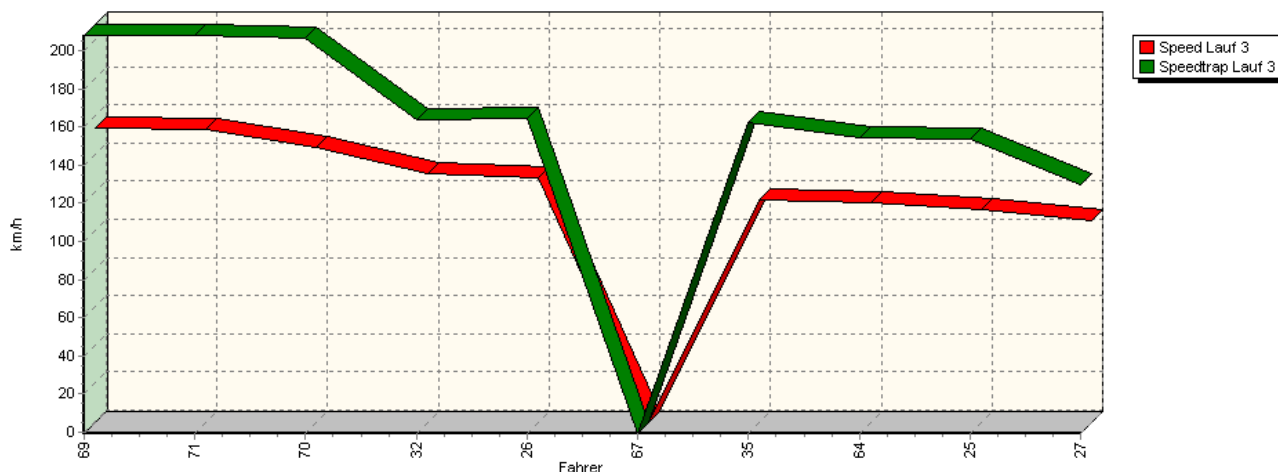


Sektor-Diagramm (Rest) Lauf 2

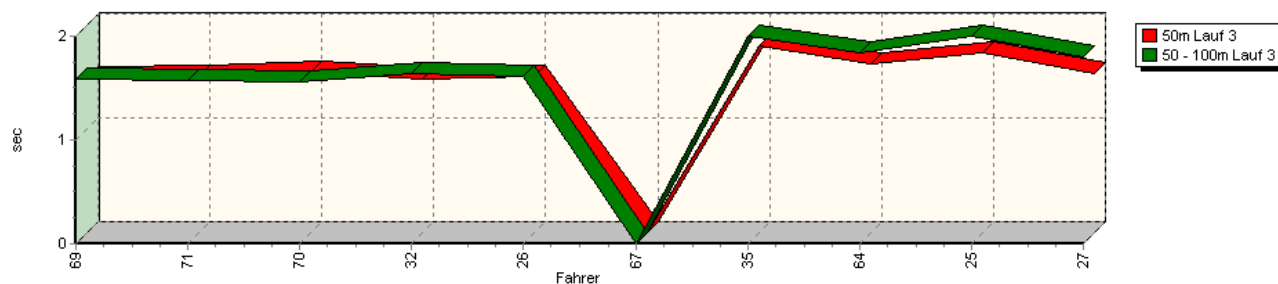


Sektorzeiten & Speeds - Gruppe E2 Zwei-Sitzer

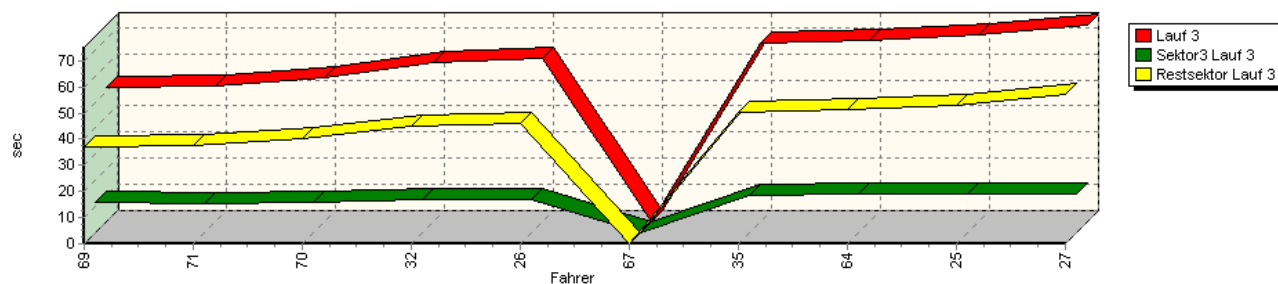
Speed-Diagramm Lauf 3



Sektor-Diagramm (Start) Lauf 3



Sektor-Diagramm (Rest) Lauf 3



Rg.	Nr.	Sektor 1 (15m)	Sektor 2 (15-50m)	Sektor 3	Speed Trap	Sektor 4	Laufzeit	Speed (Lauf)	
1	69	WEIDINGER Jörg		Osella BMW PA 20 /S					
		Lauf 1:	00:01.584	00:01.680	00:11.693	205,59 km/h	00:40.613	00:55.573	142,52 km/h
		Lauf 2:	00:01.543	00:01.593	00:11.346	210,52 km/h	00:37.283	00:51.768	152,99 km/h
		Lauf 3:	00:01.494	00:01.594	00:11.433	207,94 km/h	00:37.050	00:51.573	153,57 km/h

Sektorzeiten & Speeds - Gruppe E2 Zwei-Sitzer

Rg.	Nr.		Sektor 1 (15m)	Sektor 2 (15-50m)	Sektor 3	Speed Trap	Sektor 4	Laufzeit	Speed (Lauf)
2	71	STEINER Marcel		Martini MK-77/BMW					
		Lauf 1:	00:01.599	00:01.660	00:11.718	204,71 km/h	00:39.915	00:54.895	144,28 km/h
		Lauf 2:	00:01.537	00:01.656	00:11.530	206,87 km/h	00:38.590	00:53.315	148,55 km/h
		Lauf 3:	00:01.512	00:01.573	00:11.276	208,25 km/h	00:37.359	00:51.721	153,13 km/h
3	70	LANG Uwe		Osella PA 20 S					
		Lauf 1:	00:01.705	00:01.681	00:11.768	193,64 km/h	00:41.773	00:56.930	139,12 km/h
		Lauf 2:	00:01.498	00:01.652	00:11.540	208,07 km/h	00:40.019	00:54.712	144,76 km/h
		Lauf 3:	00:01.552	00:01.556	00:11.648	207,02 km/h	00:40.429	00:55.187	143,51 km/h
4	32	BORMOLINI Luigi		Osella PA 9					
		Lauf 1:	00:01.467	00:01.748	00:12.841	159,48 km/h	00:48.549	01:04.607	122,59 km/h
		Lauf 2:	00:01.577	00:01.777	00:12.954	171,71 km/h	00:46.325	01:02.635	126,45 km/h
		Lauf 3:	00:01.485	00:01.635	00:12.753	164,17 km/h	00:45.201	01:01.076	129,68 km/h
5	26	PACHER Georg		Puch PRC TR III					
		Lauf 1:	00:01.573	00:01.718	00:13.467	144,36 km/h	00:50.910	01:07.669	117,04 km/h
		Lauf 2:	00:01.702	00:01.713	00:12.739	158,69 km/h	00:48.267	01:04.423	122,94 km/h
		Lauf 3:	00:01.506	00:01.614	00:12.909	164,75 km/h	00:46.203	01:02.233	127,26 km/h
6	67	MÜLLER Urs		Argo Alfa Romeo JM 21					
		Lauf 1:	00:01.549	00:01.703	00:13.025	182,27 km/h	00:46.332	01:02.611	126,50 km/h
		Lauf 2:	00:01.411	00:01.676	00:13.123	182,83 km/h	*	A	* km/h
		Lauf 3:	*	*	*	* km/h	*	*	* km/h
7	35	GEBHARD Dino		Lucchini P3					
		Lauf 1:	00:01.935	00:02.056	00:14.227	161,01 km/h	00:53.269	01:11.490	110,79 km/h
		Lauf 2:	00:01.824	00:02.045	00:14.022	163,66 km/h	00:51.904	01:09.797	113,47 km/h
		Lauf 3:	00:01.803	00:02.001	00:14.104	162,80 km/h	00:50.211	01:08.122	116,26 km/h
8	64	TERSCHL Wolfgang		Pro Sport					
		Lauf 1:	00:01.668	00:01.844	00:14.783	149,33 km/h	00:56.145	01:14.442	106,39 km/h
		Lauf 2:	00:01.682	00:01.849	00:14.671	153,71 km/h	00:53.009	01:11.213	111,22 km/h
		Lauf 3:	00:01.634	00:01.844	00:14.565	154,73 km/h	00:51.285	01:09.330	114,24 km/h
9	25	KAISER Stefan		Westfield X-One					
		Lauf 1:	00:01.768	00:02.004	00:14.631	154,20 km/h	00:55.458	01:13.863	107,23 km/h
		Lauf 2:	00:01.585	00:01.884	00:14.842	151,01 km/h	00:54.363	01:12.676	108,98 km/h
		Lauf 3:	00:01.738	00:02.001	00:14.637	153,95 km/h	00:53.055	01:11.433	110,87 km/h
10	27	SIEBERT Gerhard		URD BMW 772					
		Lauf 1:	00:01.568	00:01.890	00:14.988	139,65 km/h	01:02.935	01:21.384	97,32 km/h
		Lauf 2:	00:01.660	00:01.907	00:14.581	135,71 km/h	00:59.995	01:18.145	101,35 km/h
		Lauf 3:	00:01.540	00:01.804	00:14.850	130,13 km/h	00:56.975	01:15.172	105,36 km/h