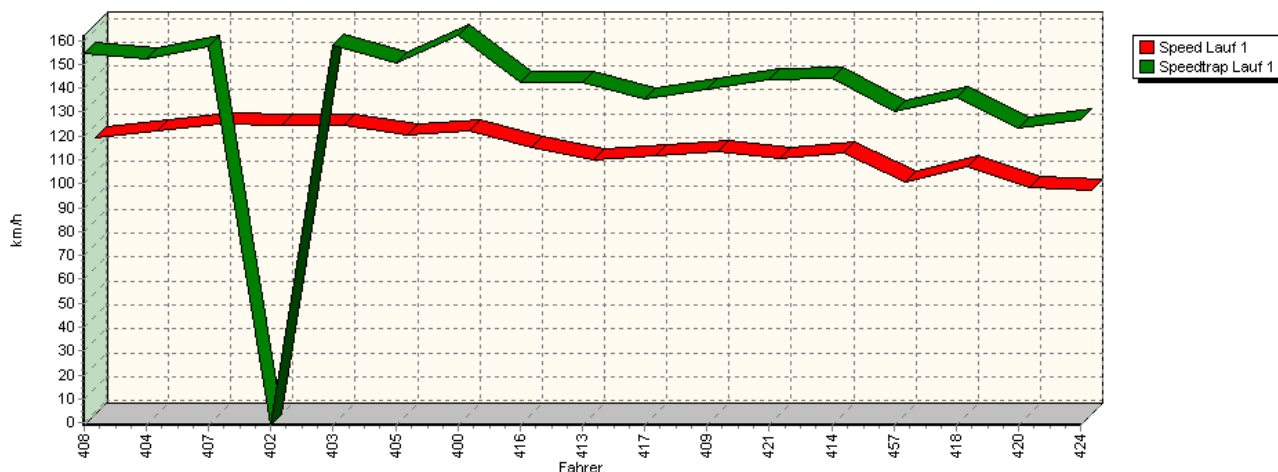
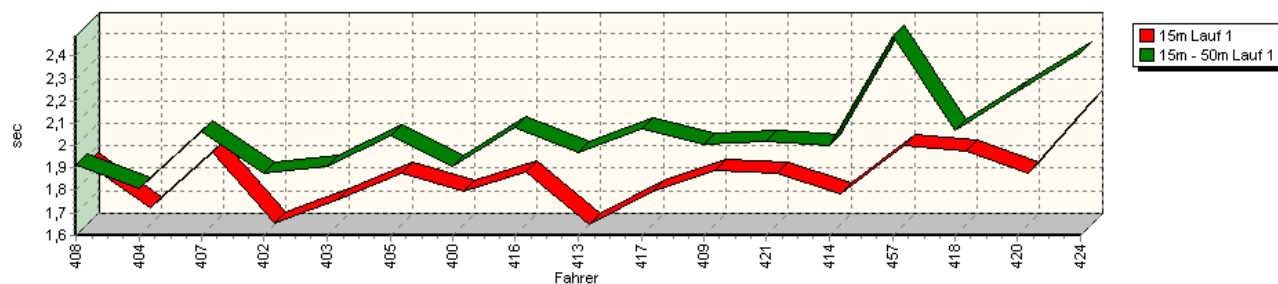


Sektorzeiten & Speeds - Gruppe H (DMSB, OSK) bis 1300 ccm - Klasse 16

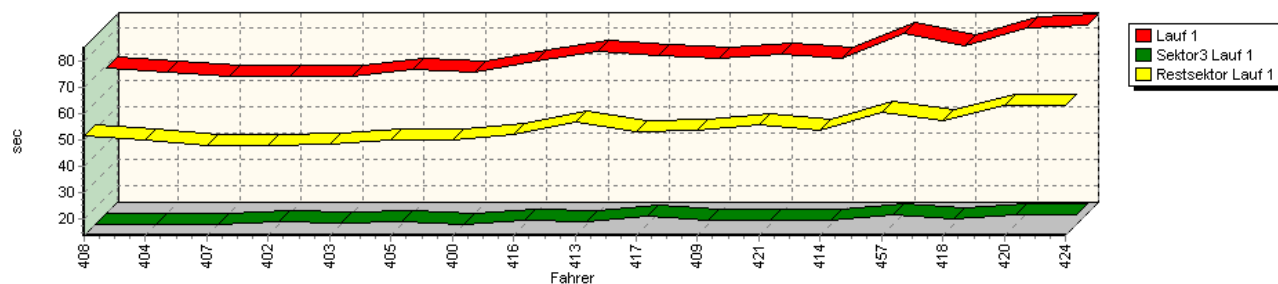
Speed-Diagramm Lauf 1



Sektor-Diagramm (Start) Lauf 1

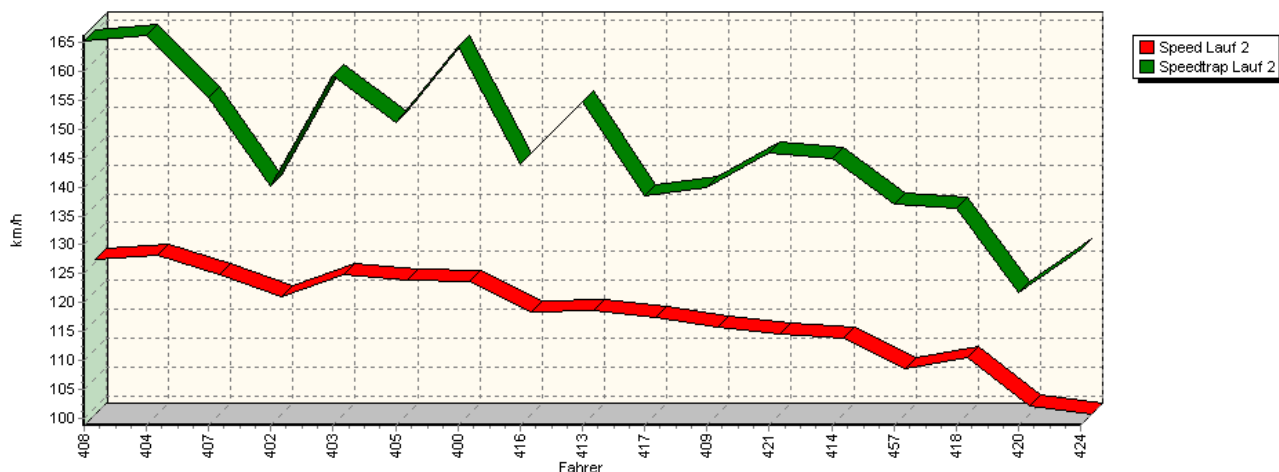


Sektor-Diagramm (Rest) Lauf 1

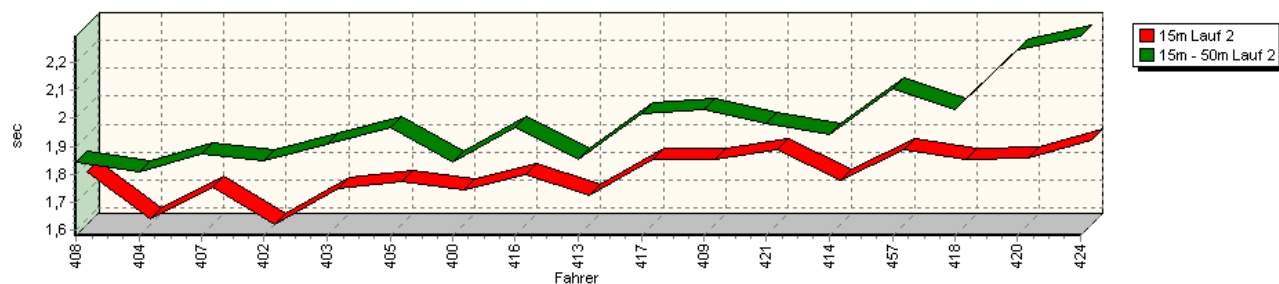


Sektorzeiten & Speeds - Gruppe H (DMSB, OSK) bis 1300 ccm - Klasse 16

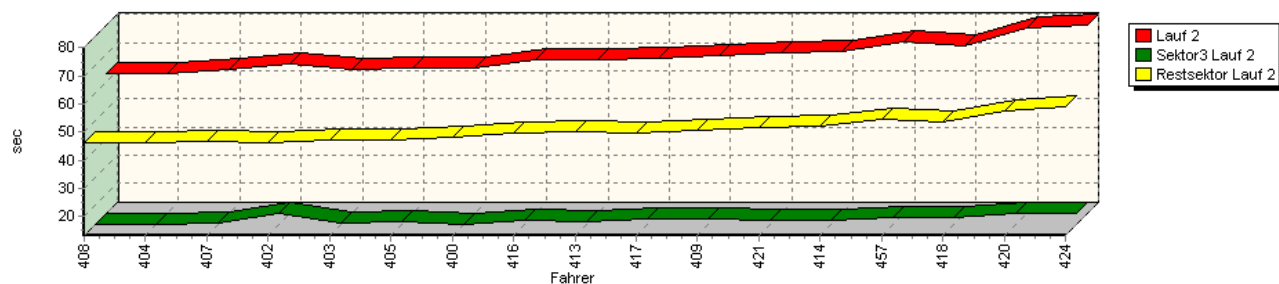
Speed-Diagramm Lauf 2



Sektor-Diagramm (Start) Lauf 2

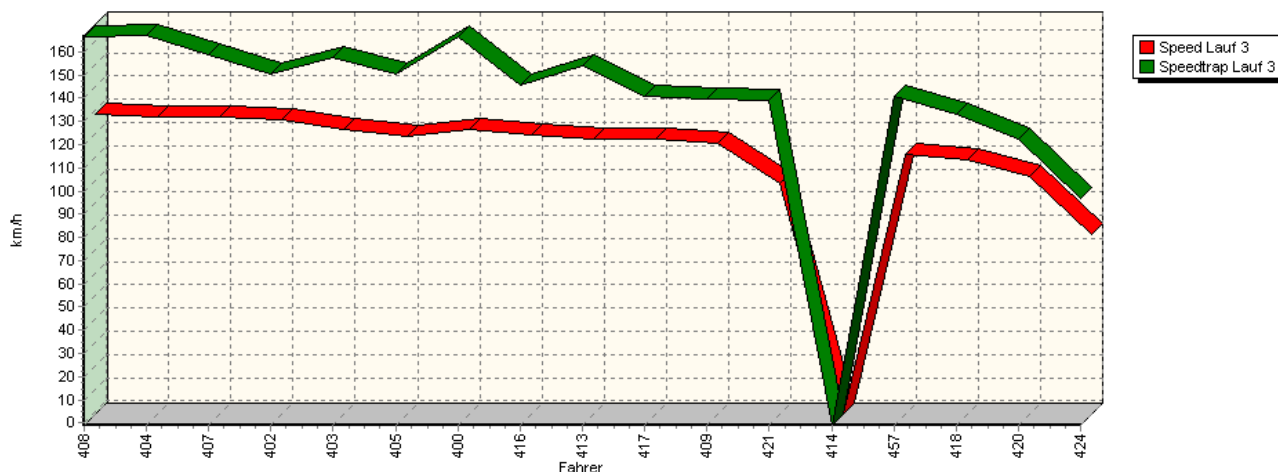


Sektor-Diagramm (Rest) Lauf 2

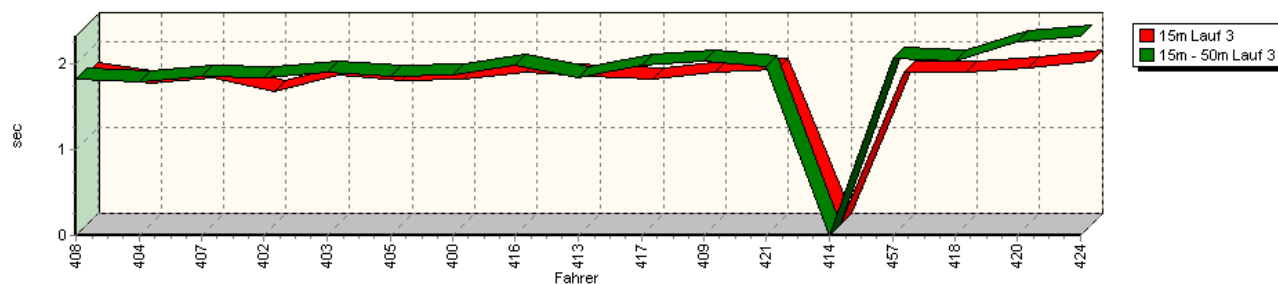


Sektorzeiten & Speeds - Gruppe H (DMSB, OSK) bis 1300 ccm - Klasse 16

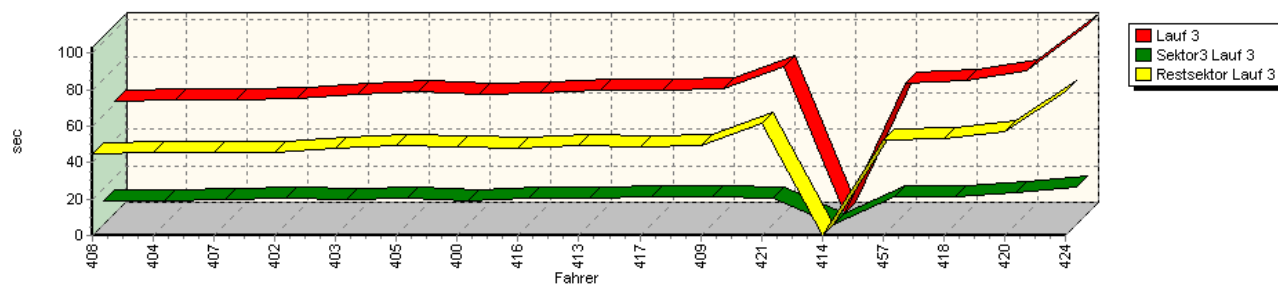
Speed-Diagramm Lauf 3



Sektor-Diagramm (Start) Lauf 3



Sektor-Diagramm (Rest) Lauf 3



Rg.	Nr.	Sektor 1 (15m)	Sektor 2 (15-50m)	Sektor 3	Speed Trap	Sektor 4	Laufzeit	Speed (Lauf)	
1	408	GEHRIG Jürgen		VW Polo 16V					
		Lauf 1:	00:01.870	00:01.914	00:13.709	154,46 km/h	00:51.592	01:09.085	114,64 km/h
		Lauf 2:	00:01.771	00:01.845	00:13.180	165,29 km/h	00:46.270	01:03.066	125,58 km/h
		Lauf 3:	00:01.748	00:01.823	00:13.103	166,53 km/h	00:45.157	01:01.831	128,09 km/h

Sektorzeiten & Speeds - Gruppe H (DMSB, OSK) bis 1300 ccm - Klasse 16

Rg.	Nr.		Sektor 1 (15m)	Sektor 2 (15-50m)	Sektor 3	Speed Trap	Sektor 4	Laufzeit	Speed (Lauf)
2	404	WEIßDORN Franz	VW Polo 16V						
		Lauf 1:	00:01.675	00:01.809	00:13.747	152,45 km/h	00:50.261	01:07.492	117,35 km/h
		Lauf 2:	00:01.604	00:01.808	00:13.275	166,25 km/h	00:46.042	01:02.729	126,26 km/h
		Lauf 3:	00:01.645	00:01.793	00:13.031	167,04 km/h	00:45.731	01:02.200	127,33 km/h
3	407	MOSER Gerhard	VW Polo I						
		Lauf 1:	00:01.922	00:02.063	00:13.784	157,20 km/h	00:48.046	01:05.815	120,34 km/h
		Lauf 2:	00:01.715	00:01.874	00:13.875	155,38 km/h	00:46.899	01:04.363	123,05 km/h
		Lauf 3:	00:01.706	00:01.848	00:13.523	158,61 km/h	00:45.350	01:02.427	126,87 km/h
4	402	SPÖRI Markus	Suzuki Swift 4 WD						
		Lauf 1:	00:01.604	00:01.877	00:14.466	* km/h	00:48.171	01:06.118	119,79 km/h
		Lauf 2:	00:01.582	00:01.847	00:17.038	140,27 km/h	00:46.050	01:06.517	119,07 km/h
		Lauf 3:	00:01.547	00:01.835	00:14.084	150,63 km/h	00:45.569	01:03.035	125,64 km/h
5	403	GLAS Wolfgang	VW Polo I Minichberger 16V						
		Lauf 1:	00:01.708	00:01.906	00:13.982	157,76 km/h	00:48.518	01:06.114	119,79 km/h
		Lauf 2:	00:01.710	00:01.907	00:13.816	159,26 km/h	00:46.957	01:04.390	123,00 km/h
		Lauf 3:	00:01.732	00:01.893	00:13.964	157,53 km/h	00:47.604	01:05.193	121,49 km/h
6	405	GÖTZL Helmut	VW EMP Polo 8V						
		Lauf 1:	00:01.827	00:02.045	00:14.392	150,66 km/h	00:50.113	01:08.377	115,83 km/h
		Lauf 2:	00:01.737	00:01.967	00:14.173	151,20 km/h	00:46.993	01:04.870	122,09 km/h
		Lauf 3:	00:01.667	00:01.859	00:14.137	150,38 km/h	00:49.159	01:06.822	118,52 km/h
7	400	KONRAD Manfred	VW Corrado						
		Lauf 1:	00:01.750	00:01.910	00:13.544	162,04 km/h	00:50.178	01:07.382	117,54 km/h
		Lauf 2:	00:01.704	00:01.843	00:13.172	164,42 km/h	00:48.295	01:05.014	121,82 km/h
		Lauf 3:	00:01.695	00:01.862	00:13.095	166,49 km/h	00:48.448	01:05.100	121,66 km/h
8	416	BAUER Christoph	VW Polo 86C 8V						
		Lauf 1:	00:01.833	00:02.083	00:15.349	142,43 km/h	00:52.388	01:11.653	110,53 km/h
		Lauf 2:	00:01.760	00:01.968	00:14.836	143,92 km/h	00:49.435	01:07.999	116,47 km/h
		Lauf 3:	00:01.769	00:01.988	00:14.656	145,47 km/h	00:47.978	01:06.391	119,29 km/h
9	413	WIEBE Hans-Peter	Renault R8 Gordini PWR						
		Lauf 1:	00:01.599	00:01.969	00:14.697	142,58 km/h	00:57.055	01:15.320	105,15 km/h
		Lauf 2:	00:01.684	00:01.852	00:14.355	154,79 km/h	00:50.014	01:07.905	116,63 km/h
		Lauf 3:	00:01.730	00:01.843	00:14.428	154,22 km/h	00:49.357	01:07.358	117,58 km/h
10	417	HÖRNIG Christof	VW Polo 8V						
		Lauf 1:	00:01.746	00:02.076	00:16.902	135,28 km/h	00:53.404	01:14.128	106,84 km/h
		Lauf 2:	00:01.814	00:02.016	00:15.189	138,45 km/h	00:49.481	01:08.500	115,62 km/h
		Lauf 3:	00:01.685	00:01.985	00:15.038	141,10 km/h	00:48.747	01:07.455	117,41 km/h
11	409	ABB Nils	VW Schneider Polo II 8V						
		Lauf 1:	00:01.841	00:02.009	00:15.220	139,36 km/h	00:53.637	01:12.707	108,93 km/h
		Lauf 2:	00:01.812	00:02.033	00:15.058	139,89 km/h	00:50.619	01:09.522	113,92 km/h
		Lauf 3:	00:01.764	00:02.022	00:15.114	139,83 km/h	00:49.597	01:08.497	115,62 km/h
12	421	STREIBERGER Klaus	VW Polo						
		Lauf 1:	00:01.830	00:02.020	00:15.070	143,74 km/h	00:55.719	01:14.639	106,11 km/h
		Lauf 2:	00:01.846	00:01.983	00:14.712	145,87 km/h	00:51.787	01:10.328	112,62 km/h
		Lauf 3:	00:01.797	00:01.969	00:14.799	138,83 km/h	01:01.875	01:20.440	98,46 km/h
13	414	DÜRIG André	Fiat Uno						
		Lauf 1:	00:01.733	00:02.001	00:15.246	144,13 km/h	00:53.986	01:12.966	108,54 km/h
		Lauf 2:	00:01.740	00:01.942	00:14.822	144,97 km/h	00:52.256	01:10.760	111,93 km/h
		Lauf 3:	*	*	*	* km/h	*	*	* km/h

Sektorzeiten & Speeds - Gruppe H (DMSB, OSK) bis 1300 ccm - Klasse 16

Rg.	Nr.		Sektor 1 (15m)	Sektor 2 (15-50m)	Sektor 3	Speed Trap	Sektor 4	Laufzeit	Speed (Lauf)
14	457	ANGELBERGER Volker		Audi 50					
		Lauf 1:	00:01.954	00:02.489	00:17.476	130,01 km/h	01:00.644	01:22.563	95,93 km/h
		Lauf 2:	00:01.850	00:02.104	00:15.734	137,05 km/h	00:54.512	01:14.200	106,74 km/h
		Lauf 3:	00:01.772	00:02.062	00:15.566	140,79 km/h	00:52.103	01:11.503	110,76 km/h
15	418	RUMPEL Rupert		Simca Rallye					
		Lauf 1:	00:01.927	00:02.068	00:15.745	136,11 km/h	00:57.612	01:17.352	102,39 km/h
		Lauf 2:	00:01.813	00:02.029	00:15.431	136,37 km/h	00:53.630	01:12.903	108,64 km/h
		Lauf 3:	00:01.774	00:02.025	00:15.358	133,08 km/h	00:53.561	01:12.718	108,91 km/h
16	420	HÜLSMANN Markus		VW Golf I					
		Lauf 1:	00:01.826	00:02.241	00:17.296	123,57 km/h	01:03.030	01:24.393	93,85 km/h
		Lauf 2:	00:01.819	00:02.241	00:17.158	121,73 km/h	00:57.749	01:18.967	100,30 km/h
		Lauf 3:	00:01.814	00:02.254	00:17.115	122,17 km/h	00:57.043	01:18.226	101,25 km/h
17	424	MELZOW Thomas		Fiat 127 A					
		Lauf 1:	00:02.148	00:02.413	00:17.497	126,92 km/h	01:03.463	01:25.521	92,61 km/h
		Lauf 2:	00:01.884	00:02.292	00:16.973	129,21 km/h	00:59.047	01:20.196	98,76 km/h
		Lauf 3:	00:01.902	00:02.319	00:20.329	96,50 km/h	01:18.837	01:43.387	76,61 km/h